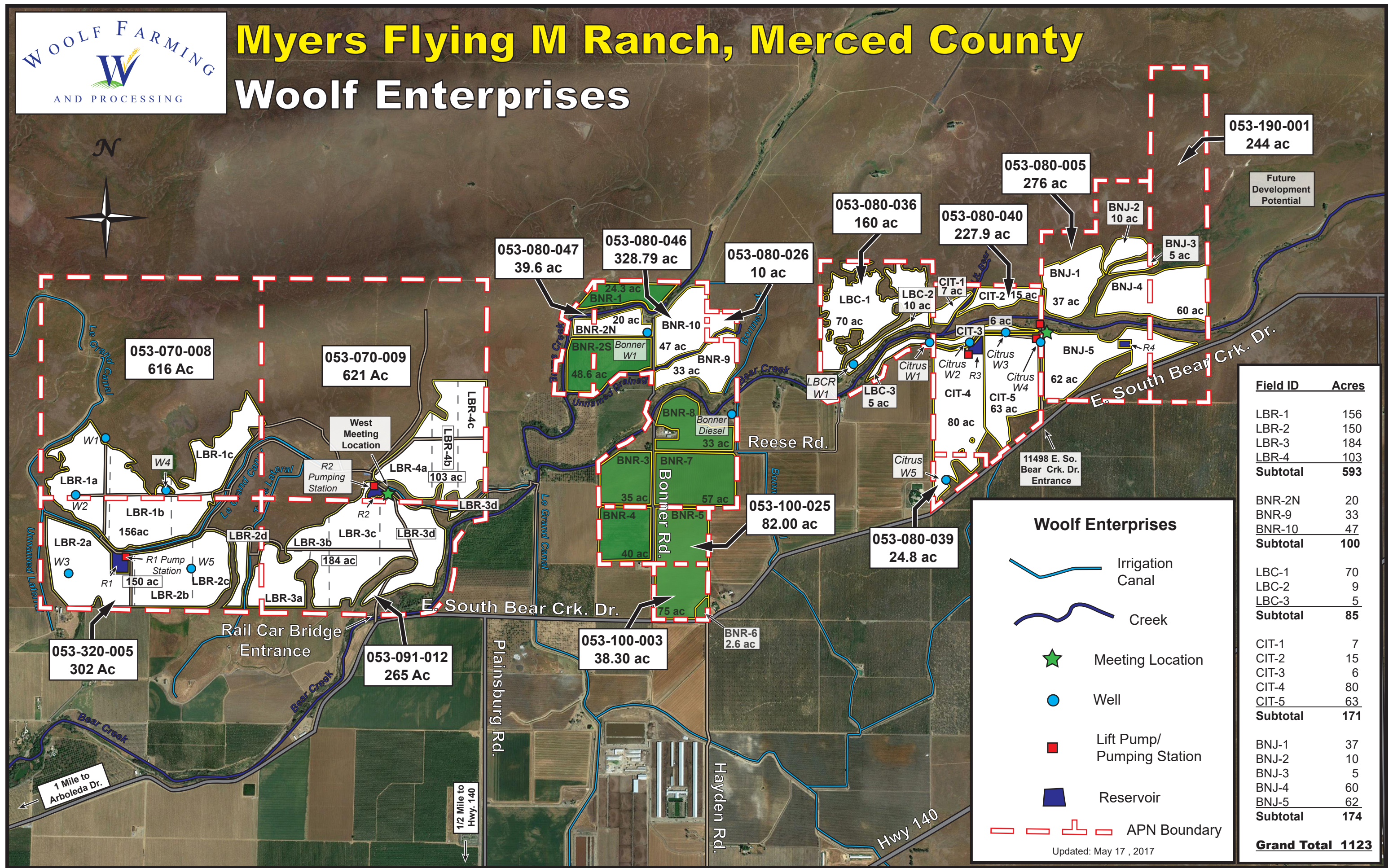




Myers Flying M Ranch, Merced County

Woolf Enterprises



Field ID	Acres
LBR-1	156
LBR-2	150
LBR-3	184
LBR-4	103
Subtotal	593
BNR-2N	20
BNR-9	33
BNR-10	47
Subtotal	100
LBC-1	70
LBC-2	9
LBC-3	5
Subtotal	85
CIT-1	7
CIT-2	15
CIT-3	6
CIT-4	80
CIT-5	63
Subtotal	171
BNJ-1	37
BNJ-2	10
BNJ-3	5
BNJ-4	60
BNJ-5	62
Subtotal	174
Grand Total	1123

Woolf Enterprises

- Irrigation Canal
- Creek
- Meeting Location
- Well
- Lift Pump/ Pumping Station
- Reservoir
- APN Boundary

Updated: May 17, 2017

Future Development Potential



053-320-005
302 Ac

053-070-008
616 Ac

053-070-009
621 Ac

053-080-047
39.6 ac

053-080-046
328.79 ac

053-080-026
10 ac

053-080-036
160 ac

053-080-040
227.9 ac

053-080-005
276 ac

053-190-001
244 ac

053-100-025
82.00 ac

053-080-039
24.8 ac

053-100-003
38.30 ac

053-091-012
265 Ac

1 Mile to Arboleda Dr.

1/2 Mile to Hwy. 140

Rail Car Bridge Entrance

West Meeting Location

R2 Pumping Station

R1 Pump Station

11498 E. So. Bear Crk. Dr. Entrance

Reese Rd.

Plainsburg Rd.

Hayden Rd.

Hwy 140

E. South Bear Crk. Dr.

Unmanned Laterals

Le Grand Canal

Le Grand Lateral

Bear Creek

Bear Creek

Bonner Rd.

Bonner Rd.

Bonner Rd.

Bonner Rd.

Bonner Rd.

Bonner Rd.