

AMANDE GLENN FARMS, LLC

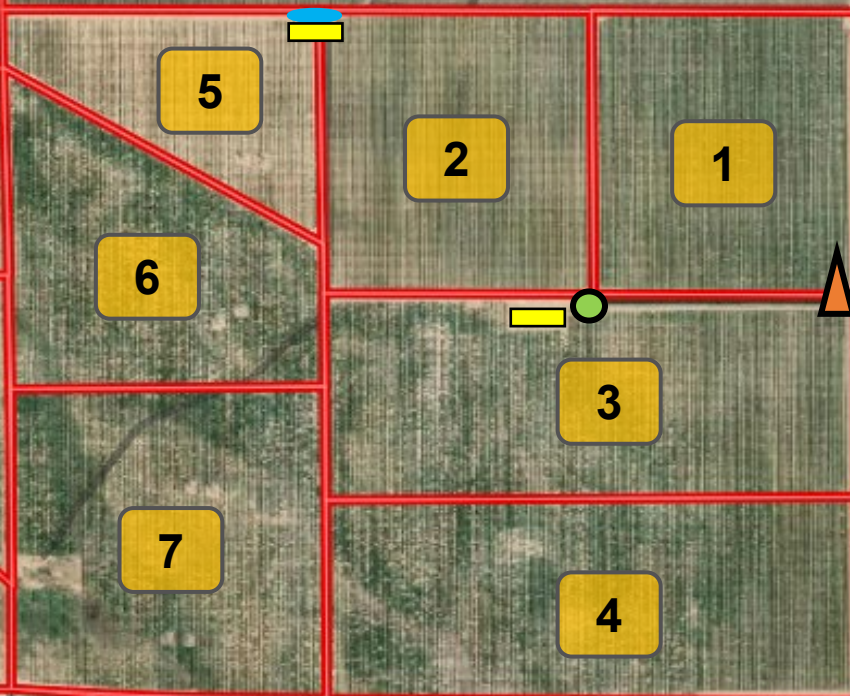
Block #	Acres		Variety			Roostock	Year	Spacing
1	67.00	[NP--50%]	[CARM--25%]	[WINT--12.5%]	[WC--12.5%]	Krymsk	Spring 2016	21' x 14'
2	68.00	[NP--50%]	[CARM--25%]	[WINT--12.5%]	[WC--12.5%]	Krymsk	Spring 2017	21' x 14'
3	92.00	[NP--50%]	[CARM--25%]	[WINT--12.5%]	[WC--12.5%]	Krymsk	Spring 2016	21' x 14'
4	95.00	[NP--50%]	[CARM--25%]	[WINT--12.5%]	[WC--12.5%]	Krymsk	Spring 2016	21' x 14'
5	38.00	[NP--50%]	[CARM--25%]	[WINT--12.5%]	[WC--12.5%]	Krymsk	Spring 2017	21' x 14'
6	65.00	[NP--50%]	[CARM--25%]	[WINT--12.5%]	[WC--12.5%]	Krymsk	Spring 2016	21' x 14'
7	88.00	[NP--50%]	[CARM--25%]	[WINT--12.5%]	[WC--12.5%]	Krymsk	Spring 2016	21' x 14'
8	16.00	[NP--50%]	[CARM--25%]	[WINT--12.5%]	[WC--12.5%]	Hansen	Fall 2018	21' x 14'
9	79.00	[NP--50%]	[CARM--25%]	[WINT--12.5%]	[WC--12.5%]	*Hansen / Krymsk	*** 2017 / 2018	21' x 14'
10	47.00	[NP--50%]	[CARM--25%]	[WINT--12.5%]	[WC--12.5%]	Hansen	*** 2017 / 2018	21' x 14'
11	52.00	[NP--50%]	[CARM--25%]	[WINT--12.5%]	[WC--12.5%]	**Hansen / Krymsk	*** 2017 / 2018	21' x 14'
12	59.00	[NP--50%]	[CARM--25%]	[WINT--12.5%]	[WC--12.5%]	Krymsk	Spring 2017	21' x 14'





Total Planted Acres: 766.00

* East half of block #9 on Hansen rootstock. West half of block #9 on Krymsk rootstock.

** Block #11 is on Hansen rootstock at higher elevation, and Krymsk rootstock at lower elevation.

*** East half of block #'s 9, 10, & 11 were planted in the spring of 2017. The west half of block #'s 9, 10, & 11 were planted in the fall of 2018.



	=	WELL
	=	PUMP
	=	FILTER STATION
	=	GLIDE WD OUTLET