



Hello,

Here is the additional information that was needed for the Pollinator Partnership Certifications. Please let me know how I can address any and all questions that may arise.

~Madison

madison@camposbrothers.com

Campos Brothers 4 (I-5 Ranch)

*****Can we please update the address on this ranch to 54146 Little Panoche Rd., Firebaugh, CA - I didn't place the correct address on this ranch when I originally submitted? Thank you!*****

-they need some names of summer and spring weeds that bloom -

Summer and Spring weeds that can be found in the I5 ranch are: silver leaf nightshade, sun flower, mallow, tree tobacco, puncture vine, alkali mallow, common groundsel, purselane, shepherd's purse, london rocket + alkali weed.

-they need pictures of water, forage, nesting (maybe 2 of each)

Water - Can find locations of these blocks in graphs listed below. Both are from the reservoirs on the East side of the ranch + normally have water in them year round to support a large variety of wildlife in this ranch. You can see from both photos that they support a wide variety of different flowering weed species + can see large trees too. L-R three acre reservoir + 0.82 acre reservoir



Forage- Between Little Panoche creek + the reservoirs listed there are several areas for these bees to forage throughout our ranch.

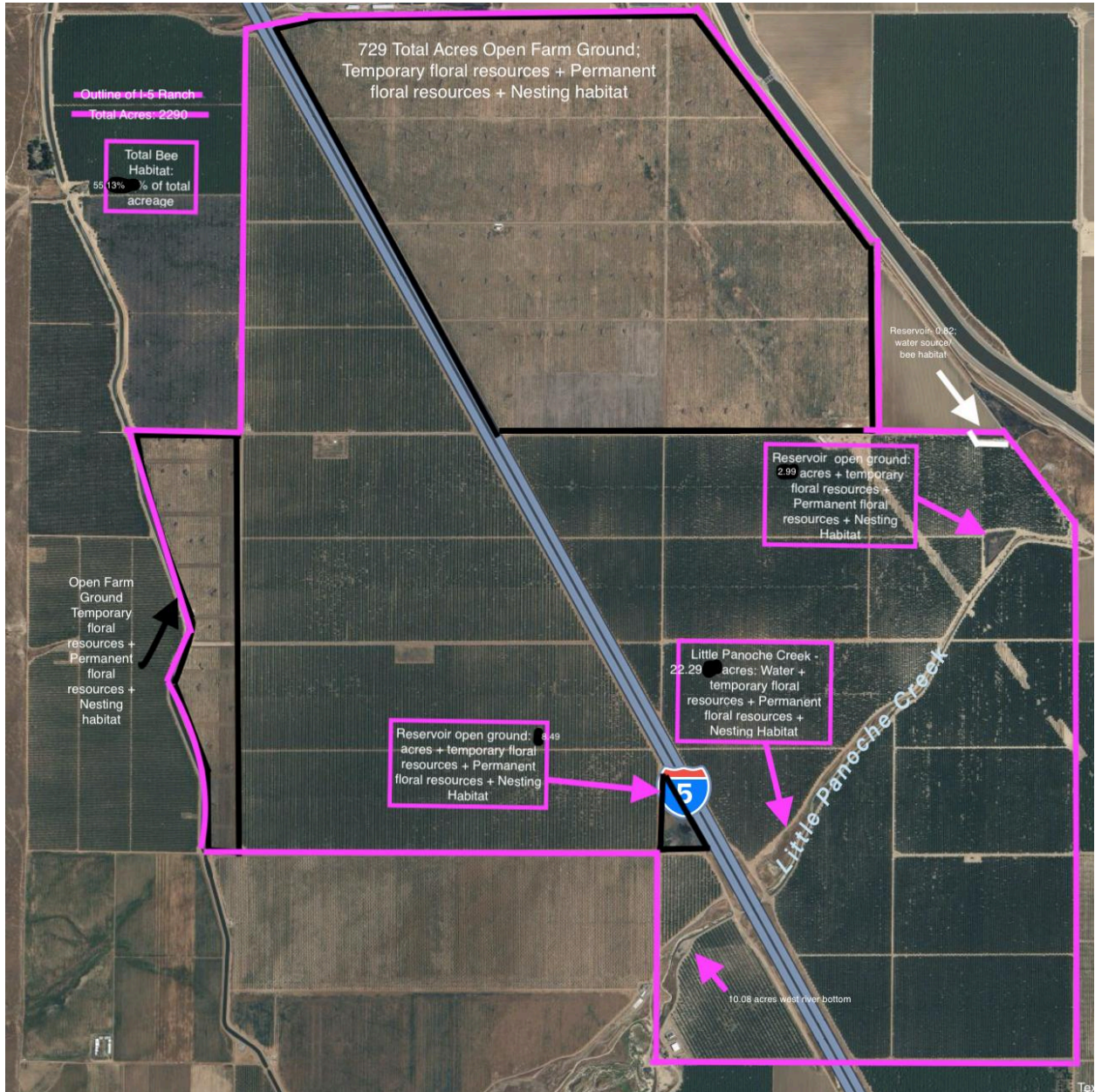


Nesting -- there are also many native trees around the reservoirs and creek for them to nest in as well.



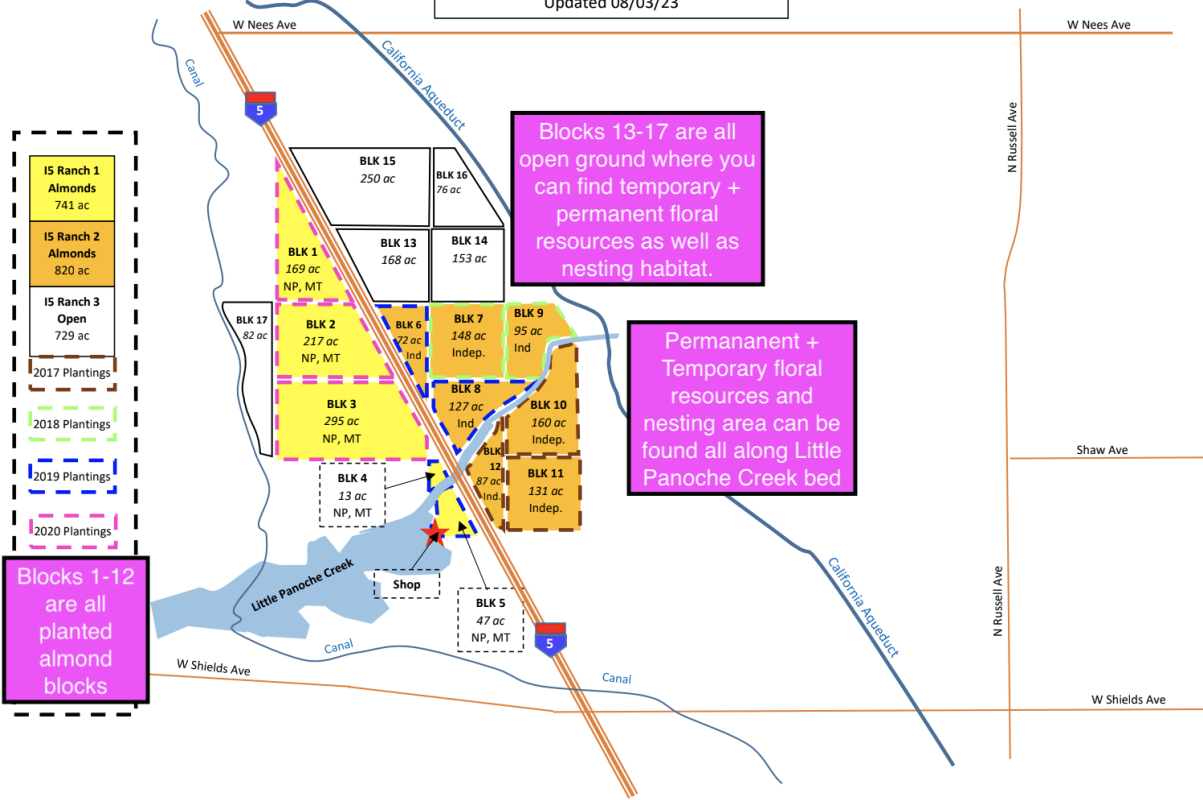


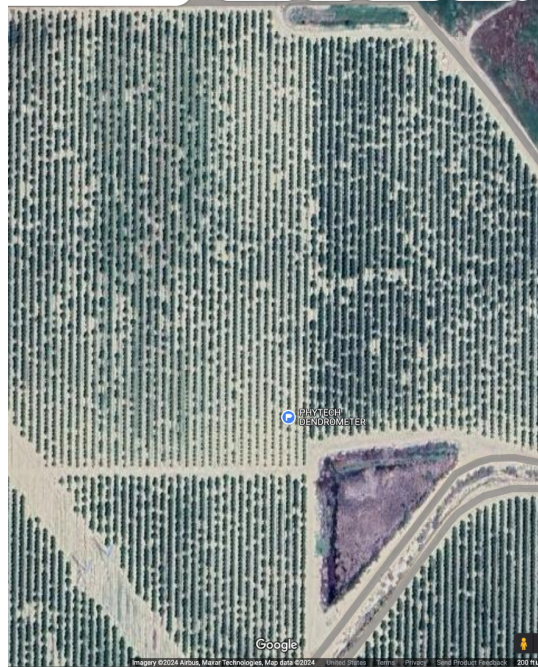
-they need a more clear map of where the almonds are and where the open ground and bee habitat location is.





I-5 Ranches
 54146 Little Panoche Road, Firebaugh, Ca
 Updated 08/03/23





Above are the Reservoirs I listed in the first photos, for a clearer picture + to show the habitat from above. Both are found on the Eastern side of the ranch across the highways -- the triangle reservoir is in between block 8 on the southeastern side and northern end of south end of block nine + the little reservoir above is by block nine on the northeastern side.

Below is a photo of the other reservoir on the western side of our ranch, in between block three on the eastern side and the northern side of block four. I listed across the free way to show the habitat from above + nesting sites. The reservoirs aren't listed on the white map that I included.

