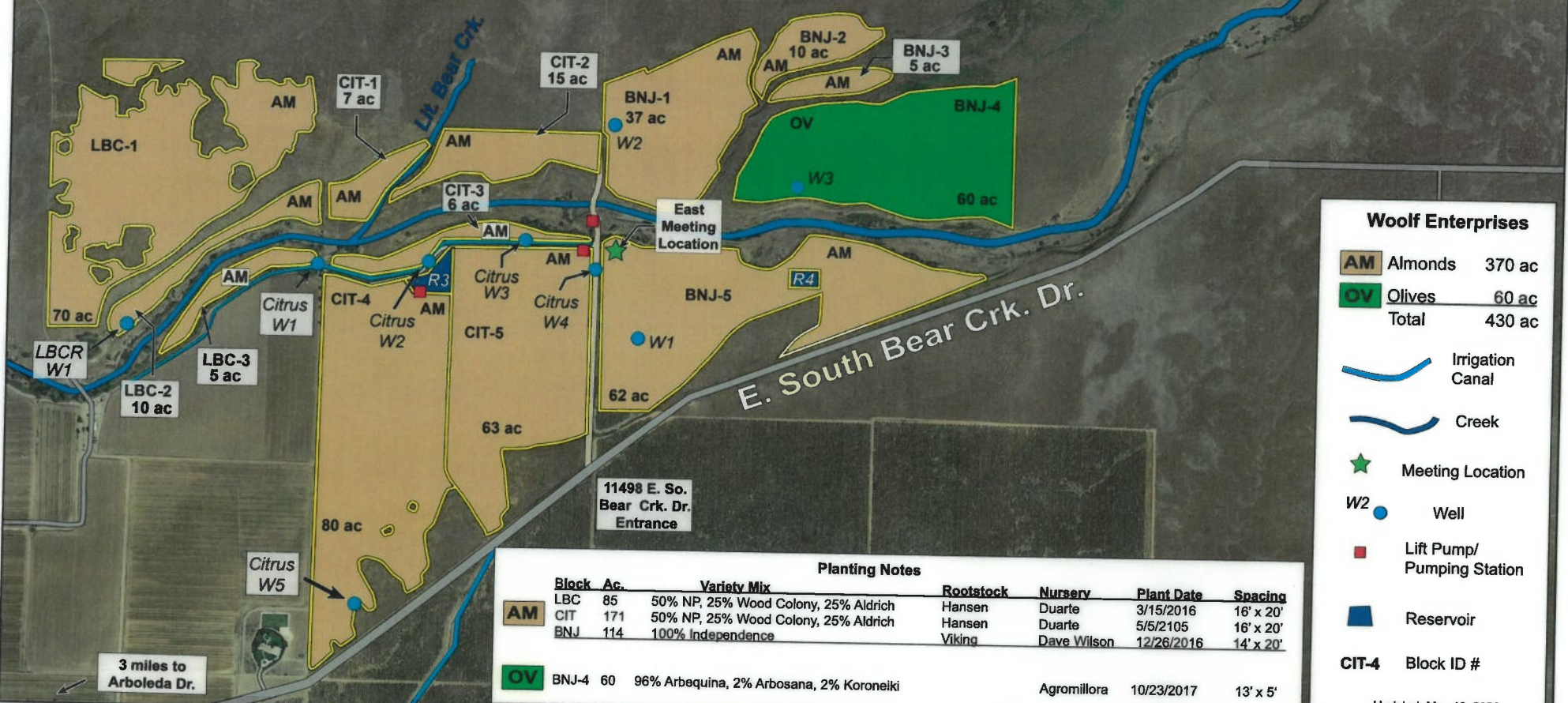




Refer to:
Map 1 for Lower Bear (LBR) Fields
& Map 2 for Bonner (BNR) Fields
Fields

**Future
Development
Potential**



Woolf Enterprises

AM	Almonds	370 ac
OV	Olives	60 ac
Total		430 ac

- Irrigation Canal
- Creek
- Meeting Location
- Well
- Lift Pump/
Pumping Station
- Reservoir

CIT-4 Block ID #

Updated: May 18, 2020

Block	Ac.	Variety Mix	Planting Notes	Rootstock	Nursery	Plant Date	Spacing
AM	LBC	85	50% NP, 25% Wood Colony, 25% Aldrich	Hansen	Duarte	3/15/2016	16' x 20'
AM	CIT	171	50% NP, 25% Wood Colony, 25% Aldrich	Hansen	Duarte	5/5/2105	16' x 20'
AM	BNJ	114	100% Independence	Viking	Dave Wilson	12/26/2016	14' x 20'
OV	BNJ-4	60	96% Arbequina, 2% Arbosana, 2% Koroneiki		Agromillora	10/23/2017	13' x 5'