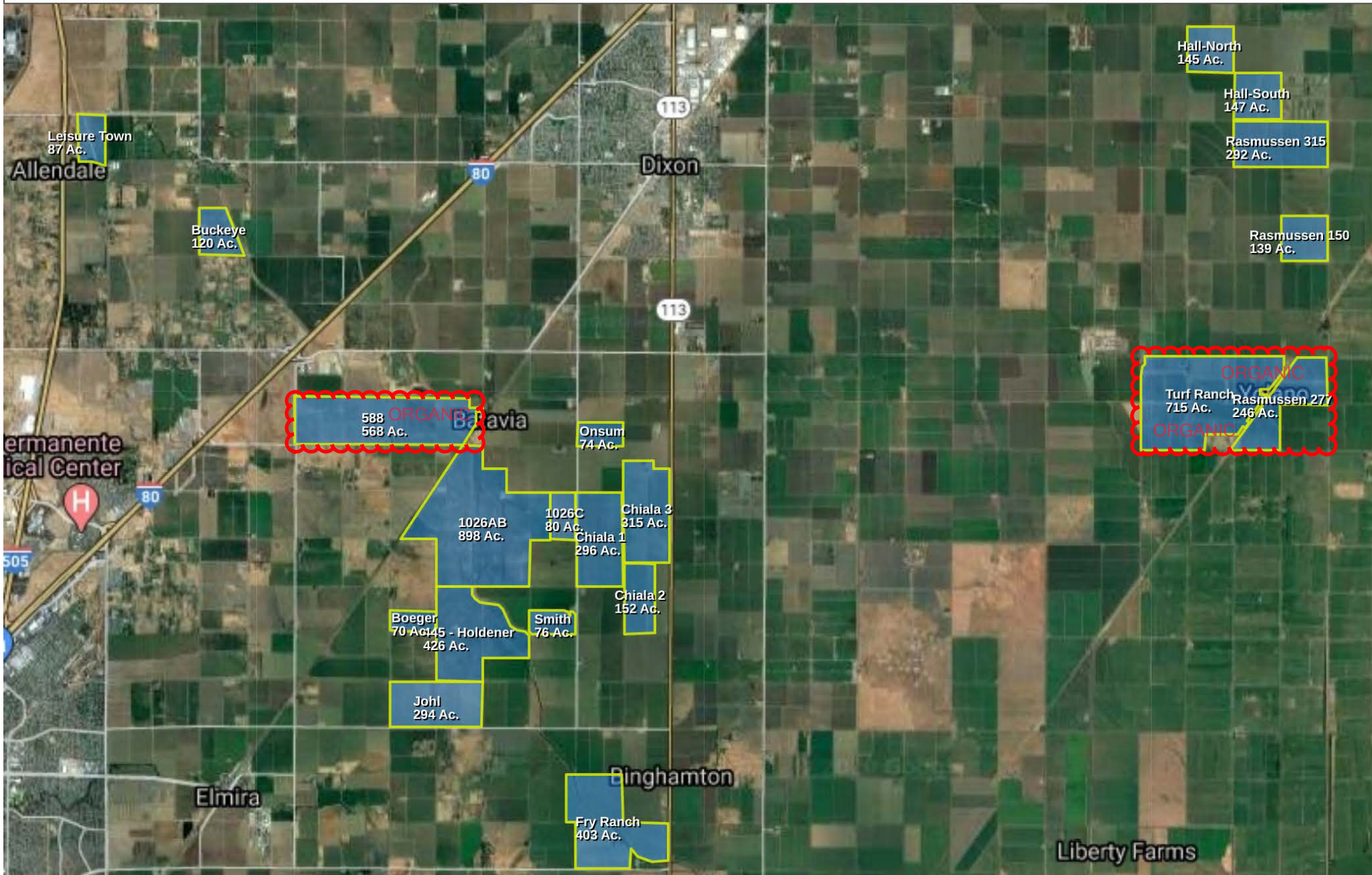


Trinitas Farming

Dixon Overview

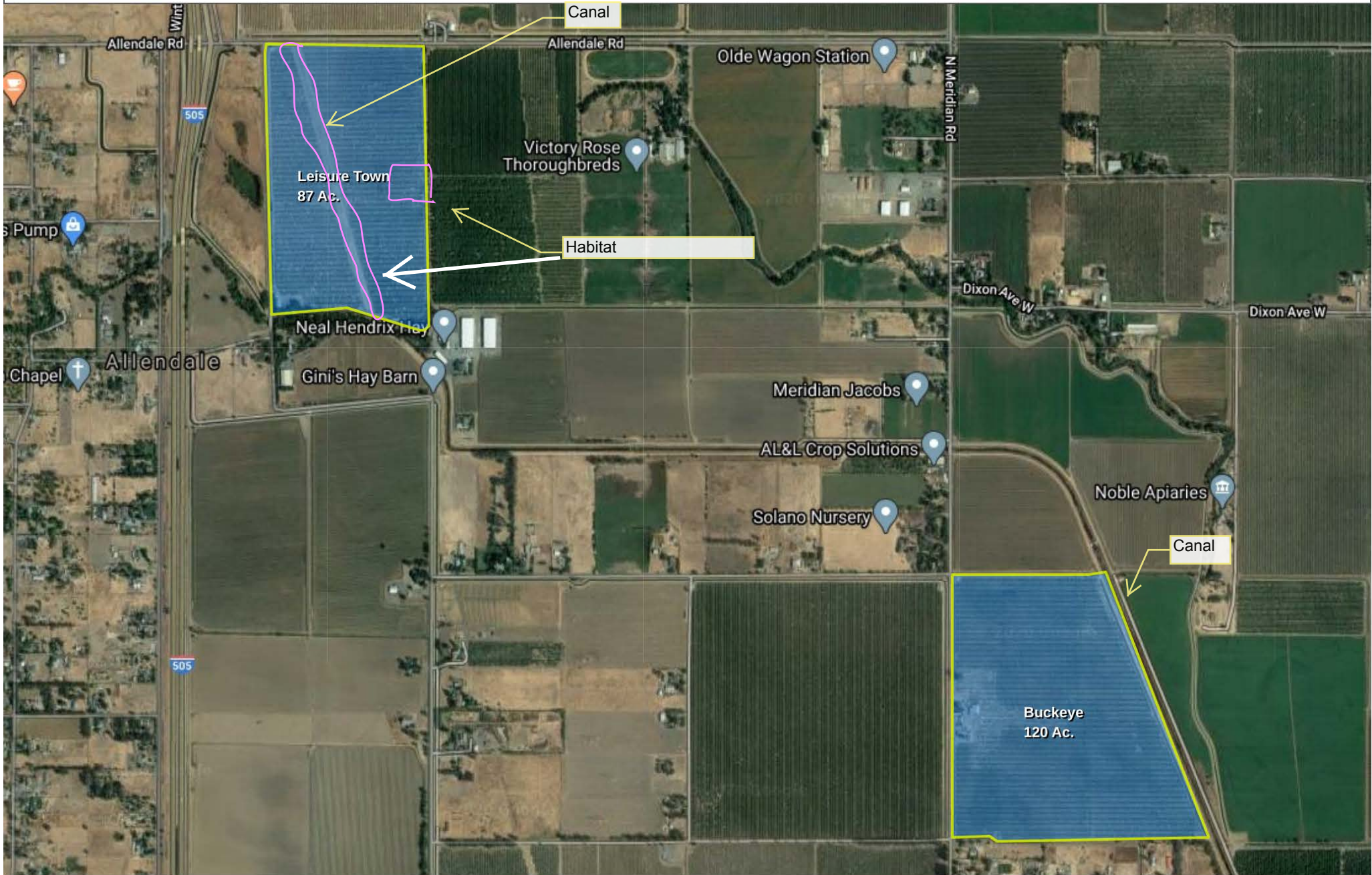


■ Almond ■ Almond (Organic)



Fields

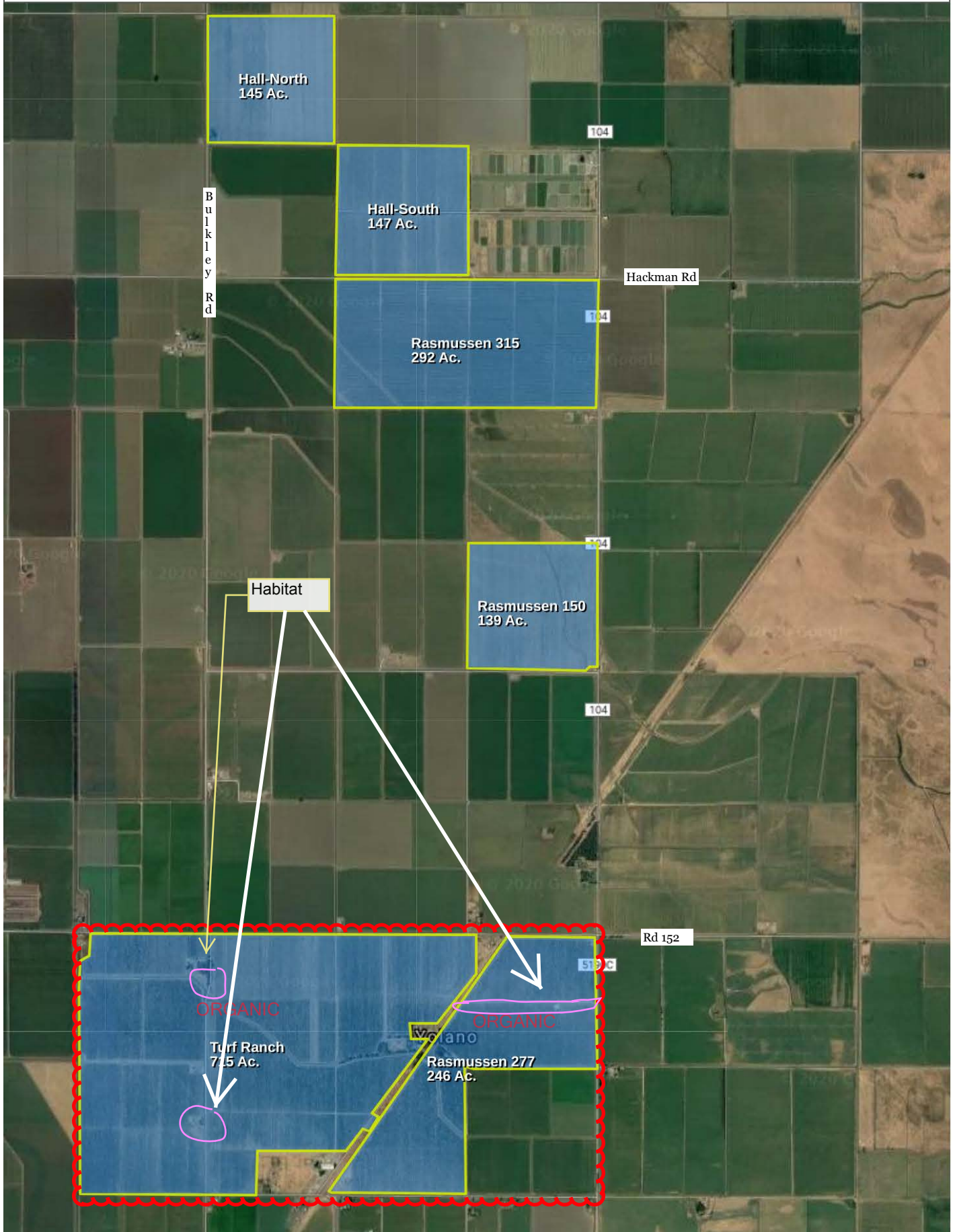
	Field Name	Acres	Plant Date	Crop	Variety	Spacing	TRS	APN
Dixon								
A	445 - Holdener	426	2015	Almond	Independence/Lovell (426 Ac.)	Crop 14 x Row 22	T6N R1E S16	0141-090-190, 0141-100-150, 0141-130-100, 0141-140-010
A	588	568	2015	Almond (Organic)	Independence (568 Ac.)	Crop 14 x Row 22	T7N R1E S32	0109-280-010, 0109-280-020, 0109-290-010, 0109-290-020, 0109-290-030, 0109-290-060, 0109-290-110, 0109-290-120, 0109-290-130, 0109-290-140, 0109-290-160
A	1026AB	898	2015	Almond	Independence (898 Ac.)	Crop 16 x Row 22	T6N R1E S4	0141-050-020, 0141-050-160, 0141-050-170, 0141-050-180, 0141-050-190, 0141-050-200, 0141-090-280, 0141-090-290, 0141-100-010, 0141050030
A	1026C	80	2019	Almond	Independence (80 Ac.)	Crop 16 x Row 22	T6N R1E S3	
A	Boeger	70	2016	Almond	Independence/Nemaguard (70 Ac.)	Crop 14 x Row 22	T6N R1E S9	0141-090-130
A	Buckeye	120	2015	Almond	Independence/Lovell (120 Ac.)	Crop 14 x Row 22	T7N R1E S19	0109-040-010, 0109-040-080
A	Chiala 1	296	2017	Almond	Independence/Nemaguard (296 Ac.)	Crop 14 x Row 22	T6N R1E S11	0141-060-060, 0141-100-120, 0141060050
A	Chiala 2	152	2017	Almond	Independence/Nemaguard (152 Ac.)	Crop 14 x Row 22	T6N R1E S11	0141100140
A	Chiala 3	315	2017	Almond	Independence/Nemaguard (315 Ac.)	Crop 14 x Row 22	T6N R1E S2	0141060040, 0141100130, 0141060030, 0141060050
A	Fry Ranch	403	2018	Almond	Independence/Root PAc R (403 Ac.)	Crop 13 x Row 22	T6N R1E S26	0142190020, 0142240010, 0142240050, 0142190010, 0142180040
A	Hall-North	145	2017	Almond	Independence/Lovell (145 Ac.)	Crop 14 x Row 22	T7N R2E S11	0111-120-030
A	Hall-South	147	2017	Almond	Independence/Lovell (147 Ac.)	Crop 14 x Row 22	T7N R2E S13	0111-160-090, 0111-160-150
A	Johl	294	2017	Almond	Aldrich/Nemaguard (147 Ac.), Nonpareil/Nemaguard (147 Ac.)	Crop 14 x Row 22	T6N R1E S16	0141-130-150
A	Leisure Town	87	2016	Almond	Independence/Nemaguard (87 Ac.)	Crop 14 x Row 22	T7N R1W S14	0106-023-040, 0106-023-080, 0106-023-090, 0106-023-100, 0106-023-110
A	Onsum	74	2016	Almond	Independence/Nemaguard (74 Ac.)	Crop 14 x Row 22	T7N R1E S35	0109-310-090, 0109-310-100
A	Rasmussen 150	139	2017	Almond	Independence (139 Ac.)	Crop 14 x Row 22	T7N R2E S24	0112-030-130
A	Rasmussen 277	246	2016	Almond (Organic)	Independence/Lovell (246 Ac.)	Crop 14 x Row 22	T7N R2E S36	0112-110-100, 0112-110-120, 0112-110-130, 0112-120-080, 0112-120-090
A	Rasmussen 315	292	2016	Almond	Independence/Lovell (292 Ac.)	Crop 14 x Row 22	T7N R2E S13	0111-160-070, 0111-160-080
A	Smith	76	2016	Almond	Independence/Nemaguard (76 Ac.)	Crop 14 x Row 22	T6N R1E S10	0141-100-070
A	Turf Ranch	715	2016	Almond (Organic)	Independence/Nemaguard (715 Ac.)	Crop 16 x Row 22	T7N R2E S35	0112-110-030, 0112-110-050, 0112-110-080, 0112-110-140, 0112-110-150, 0112-110-190, 0112-110-230, 0112120230, 0112120240, 0112120010



Almond

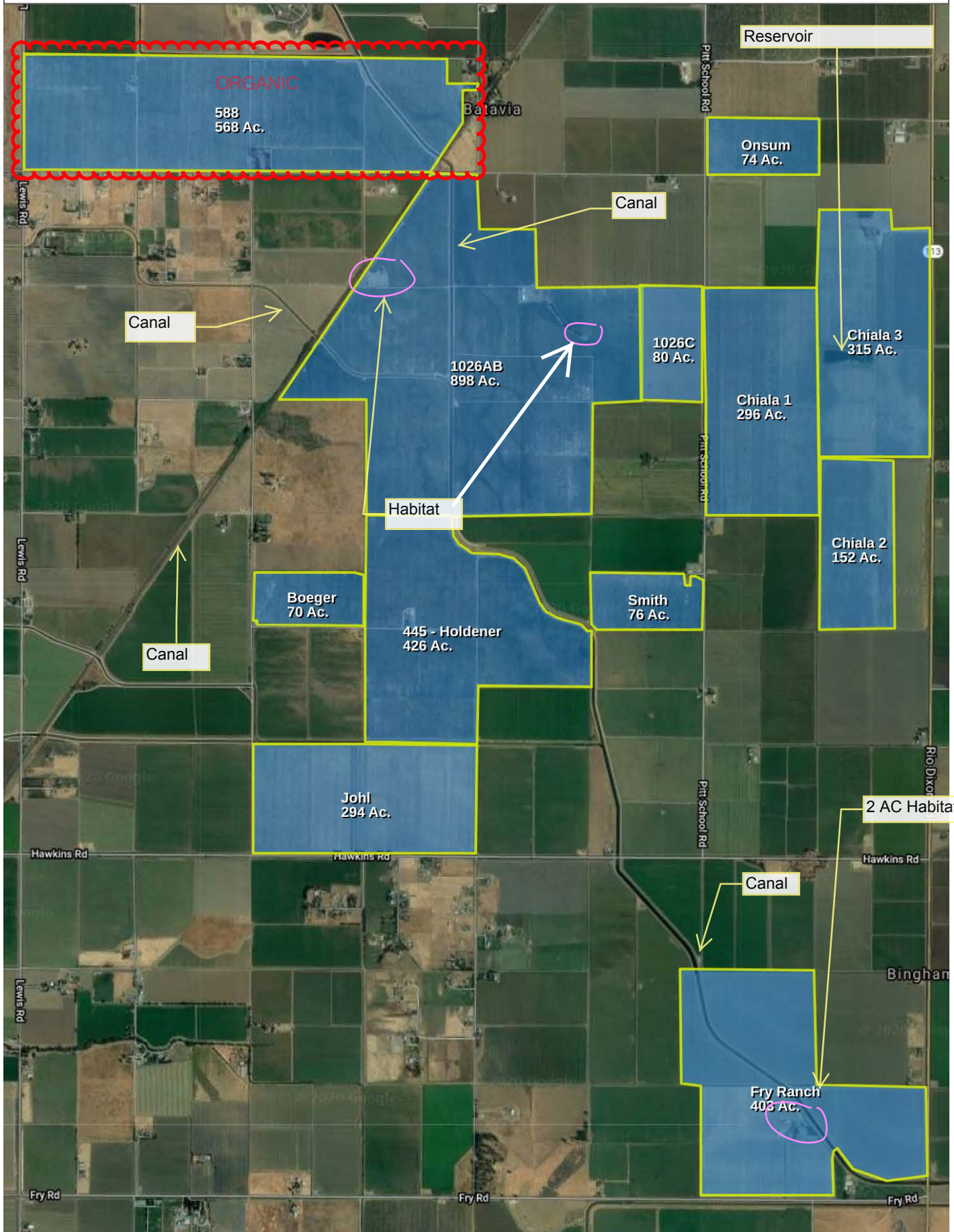


AGRI TRACKING SYSTEMS



Almond (Organic) Almond





Almond

Almond (Organic)

