

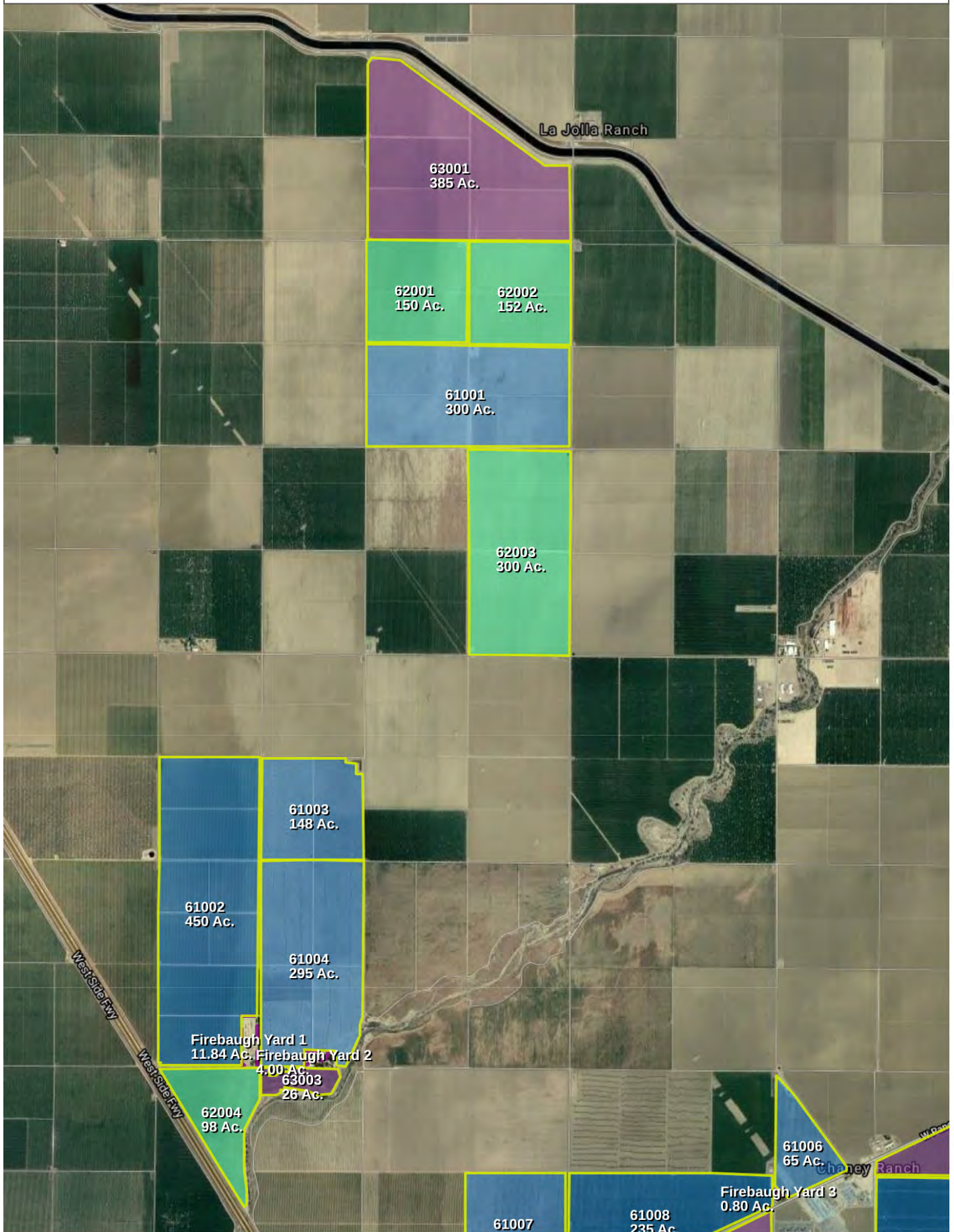
## Fields

	Field Name	Acres	Old Ranch Name	Plant Date	Crop	Variety/Rootstock (acres)	Spacing	TRS	APN
<b>Firebaugh</b>									
F	King Kool Facility Cooler/Office	8	1000 Airport Blvd	2020	Fallow			T13S R15E S31	
F	King Kool Facility Vacant/Yard A	1	1000 Airport Blvd	2020	Fallow			T13S R15E S31	
F	King Kool Facility Vacant/Yard B	2	Lots 1-8 of Block 119	2020	Fallow			T13S R15E S31	
F	King Kool Facility Vacant/Yard C	0	Lots 18-32 of Block 119	2020	Fallow			T13S R15E S31	
F	60001 <i>Pomona Farming, LLC</i>	159	18-1, Cab grapes removed 2019	2020	Fallow			T15S R13E S18	
F	60002 <i>Pomona Farming, LLC</i>	340	17-3(NW), 16-1(NE), 16-2 (S) almonds 2018	2020	Fallow			T15S R13E S16	
F	60003 <i>Pomona Farming, LLC</i>	385	Nursery(N), 20-1(W), 20-3(E)	2020	Fallow	(385 Ac.)		T15S R13E S20	
F	60004 <i>Pomona Farming, LLC</i>	300	25-1	2020	Fallow			T15S R12E S25	
F	60005 <i>Pomona Farming, LLC</i>	80	West ½ of the Northeast Quarter	2020	Fallow			T15S R13E S9	
A	61001 <i>Pomona Farming</i>	300	13-2 (W), 13-4(E)	2018	Almond	Independence (300 Ac.)	Crop 12 x Row 22	T14S R12E S13	
A	61002 <i>Pomona Farming</i>	450	44,48, 40 grapes removed 2019	2020	Almond	Independence/Hybrid-Harris-Bare (450 Ac.)		T14S R12E S35	
A	61003 <i>Pomona Farming</i>	148	42, 43	2016	Almond	Nonpareil (74 Ac.), Monterey (74 Ac.)	Crop 12 x Row 24	T14S R12E S26	
A	61004 <i>Pomona Farming</i>	295	45,46,49,50	2016	Almond	Wood Colony (148 Ac.), Nonpareil (148 Ac.)	Crop 12 x Row 24	T14S R12E S35	
A	61005 <i>Pomona Farming</i>	395	Hansen 33-2 (N), Baker 33-2(SW),33-4(SE)	2006	Almond	Wood Colony (198 Ac.), Nonpareil (198 Ac.)	Crop 12 x Row 24	T14S R13E S33	
A	61006 <i>Pomona Farming</i>	65	1	2010	Almond	Wood Colony (32 Ac.), Nonpareil (32 Ac.)	Crop 12 x Row 24	T15S R13E S5	
A	61007 <i>Pomona Farming</i>	158	3	2010	Almond	Nonpareil (79 Ac.), Wood Colony (79 Ac.)	Crop 12 x Row 24	T15S R12E S1	
A	61008 <i>Pomona Farming</i>	235	2	2004	Almond	Wood Colony (78 Ac.), Carmel (78 Ac.), Nonpareil (78 Ac.)	Crop 12 x Row 24	T15S R13E S6	
A	61009 <i>Pomona Farming</i>	620	Baker 5-3,4-2,4-4,3-2	2004	Almond	Nonpareil (310 Ac.), Monterey (310 Ac.)	Crop 12 x Row 24	T15S R13E S4	
A	61010 <i>Pomona Farming</i>	115	3-4	2004	Almond	Nonpareil (58 Ac.), Wood Colony (58 Ac.)	Crop 12 x Row 24	T15S R13E S3	
A	61011 <i>Pomona Farming</i>	156	7-2	2017	Almond	Wood Colony (78 Ac.), Nonpareil (78 Ac.)	Crop 12 x Row 24	T15S R13E S7	
A	61012 <i>Pomona Farming</i>	300	7-3 (N), 7-4 (S)	2015	Almond	Wood Colony (150 Ac.), Nonpareil (150 Ac.)	Crop 12 x Row 24	T15S R13E S7	
A	61013 <i>Pomona Farming</i>	600	8-1 (N), 8-2,17-1, 17-2 (S)	1999	Almond	Nonpareil (300 Ac.), Monterey (300 Ac.)	Crop 18 x Row 22	T15S R13E S17	
A	61014 <i>Pomona Farming</i>	300	8-3 (N), 8-4 (S)	2015	Almond	Wood Colony (150 Ac.), Nonpareil (150 Ac.)	Crop 12 x Row 24	T15S R13E S8	

A	<b>61015</b> <i>Pomona Farming</i>	151	11-2	1999	Almond	Wood Colony (50 Ac.), Nonpareil (50 Ac.), Monterey (50 Ac.)	Crop 18 x Row 22	T15S R13E S11	
A	<b>61016</b> <i>Pomona Farming</i>	158	18-2	2016	Almond	Nonpareil (79 Ac.), Monterey (79 Ac.)	Crop 12 x Row 24	T15S R13E S18	
A	<b>61017</b> <i>Pomona Farming</i>	300	18-3 (N), 18-4(S)	2017	Almond	Nonpareil (150 Ac.), Wood Colony (150 Ac.)	Crop 12 x Row 24	T15S R13E S18	
A	<b>61018</b> <i>Pomona Farming</i>	315	16-3 (N), 16-4 (S)	2017	Almond	Wood Colony (158 Ac.), Nonpareil (158 Ac.)	Crop 12 x Row 24	T15S R13E S16	
A	<b>61019</b> <i>Pomona Farming</i>	160	Hansen 15-3	1998	Almond	Monterey (80 Ac.), Nonpareil (80 Ac.)	Crop 12 x Row 24	T15S R13E S15	
A	<b>61020</b> <i>Pomona Farming, LLC</i>	300	Hansen 15-2 (N), 15-4 (S)	2015	Almond	Nonpareil (150 Ac.), Wood Colony (150 Ac.)	Crop 12 x Row 24	T15S R13E S15	
A	<b>61021</b> <i>Pomona Farming</i>	300	Hansen 14-1 (N), 14-3 (S)	2017	Almond	Monterey (150 Ac.), Wood Colony (150 Ac.)	Crop 12 x Row 24	T15S R13E S14	
A	<b>61022</b> <i>Pomona Farming, LLC</i>	160	Hansen 14-2	1999	Almond	Monterey (80 Ac.), Nonpareil (80 Ac.)	Crop 16 x Row 24	T15S R13E S14	
A	<b>61023</b> <i>Pomona Farming, LLC</i>	430	Hansen 14-4, Baker 13-1(N),13-2(S)	2004	Almond	Monterey (215 Ac.), Nonpareil (215 Ac.)	Crop 12 x Row 24	T15S R13E S14	
A	<b>61024</b> <i>Pomona Farming, LLC</i>	92	Hansen 13-4	1995	Almond	Carmel (46 Ac.), Nonpareil (46 Ac.)	Crop 12 x Row 24	T15S R13E S13	
A	<b>61025</b> <i>Pomona Farming, LLC</i>	156	9-4 (Leased)	1999	Almond	Nonpareil (78 Ac.), Monterey (78 Ac.)	Crop 18 x Row 22	T15S R13E S9	
P	<b>62001</b> <i>Pomona Farming, LLC</i>	150	13-1	2012	Pistachio	Lost Hills (150 Ac.)	Crop 15 x Row 19	T14S R12E S13	
P	<b>62002</b> <i>Pomona Farming, LLC</i>	152	13-3	2012	Pistachio	Golden Hills (152 Ac.)	Crop 15 x Row 19	T14S R12E S13	
P	<b>62003</b> <i>Pomona Farming, LLC</i>	300	24-3 (N), 24-4 (S)	2012	Pistachio	Kerman (300 Ac.)	Crop 15 x Row 19	T14S R12E S24	
P	<b>62004</b> <i>Pomona Farming, LLC</i>	98	51	2016	Pistachio	Golden Hills (98 Ac.)	Crop 15 x Row 19	T15S R12E S2	
P	<b>62005</b> <i>Pomona Farming, LLC</i>	300	9-1(N), 9-2(S)	2015	Pistachio	Golden Hills (300 Ac.)	Crop 15 x Row 19	T15S R13E S9	
P	<b>62006</b> <i>Pomona Farming, LLC</i>	300	10-2 (W), 10-4(E)	2020	Pistachio	Golden Hills (300 Ac.)	Crop 15 x Row 19	T15S R13E S10	
P	<b>62007</b> <i>Pomona Farming, LLC</i>	158	Hansen 15-1	2019	Pistachio	Lost Hills (158 Ac.)	Crop 15 x Row 19	T15S R13E S15	
P	<b>62008</b> <i>Pomona Farming, LLC</i>	450	90(N), 91(S)	2016	Pistachio	Golden Hills (450 Ac.)	Crop 15 x Row 19	T15S R15E S14	
G	<b>63001</b> <i>Pomona Farming, LLC</i>	385	12-1 (NW), 12-2 (SW), 12-4 (E)	2013	Grape, Wine	Cabernet (385 Ac.)	Crop 7 x Row 11	T14S R12E S12	
G	<b>63002</b> <i>Pomona Farming, LLC</i>	56	33-1	2005	Grape, Wine	French Colombard (56 Ac.)	Crop 7 x Row 11	T14S R13E S33	
G	<b>63003</b> <i>Pomona Farming, LLC</i>	26		1980	Grape, Wine	French Colombard (26 Ac.)	Crop 7 x Row 11	T15S R12E S2	
G	<b>63004</b> <i>Pomona Farming, LLC</i>	200	5-2(W),4-1(E)	2005	Grape, Wine	French Colombard (200 Ac.)	Crop 7 x Row 11	T15S R13E S4	
G	<b>63005</b> <i>Pomona Farming, LLC</i>	156	4-3	2005	Grape, Wine	Zinfandel (156 Ac.)	Crop 7 x Row 11	T15S R13E S4	
G	<b>63006</b> <i>Pomona Farming, LLC</i>	70	6-1	2012	Grape, Wine	Muscat (70 Ac.)	Crop 7 x Row 11	T15S R13E S6	
G	<b>63007</b> <i>Pomona Farming, LLC</i>	72	12-3	2002	Grape, Wine	Merlot (72 Ac.)	Crop 7 x Row 11	T15S R12E S12	



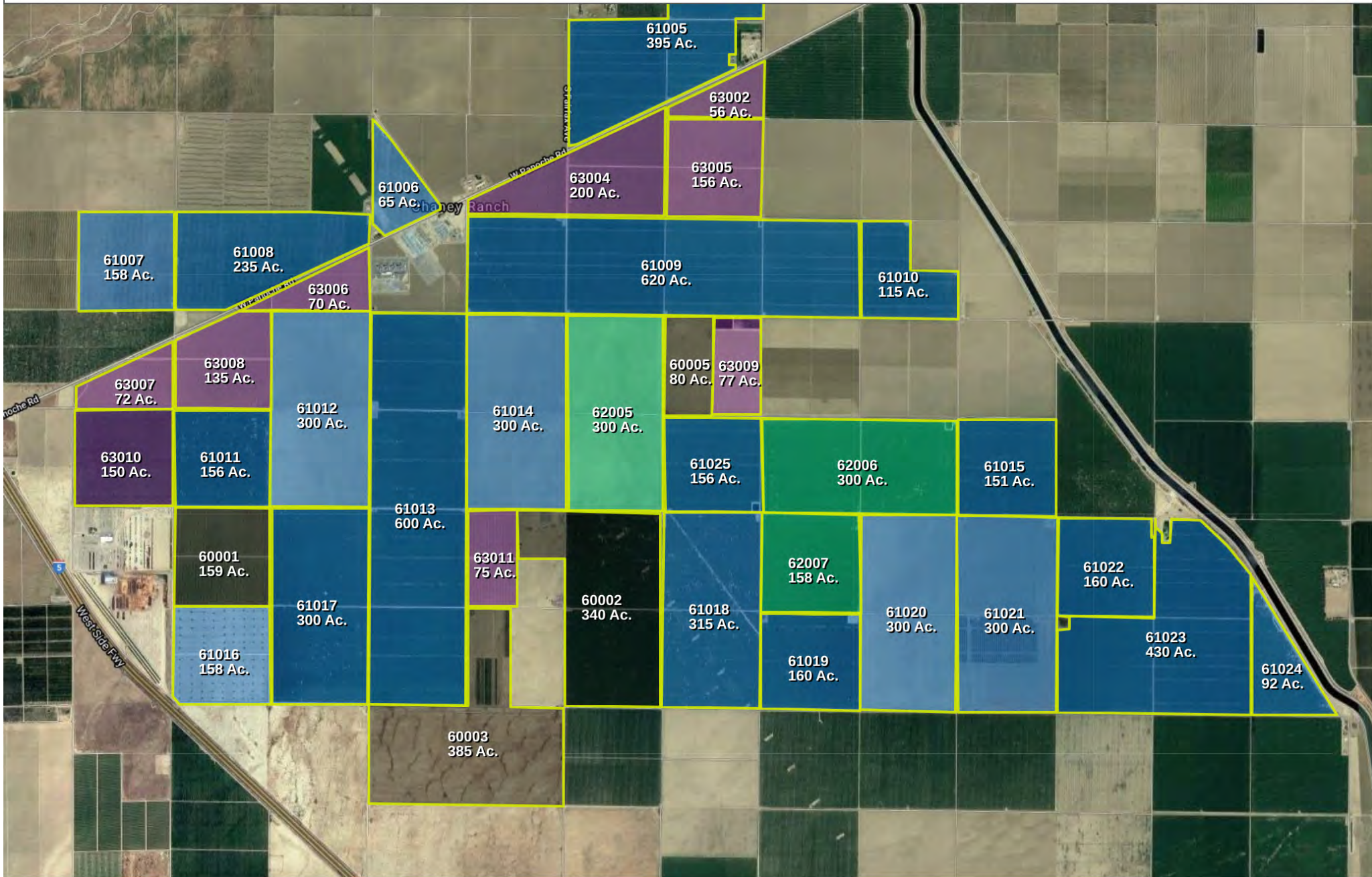
G	<b>63008</b> <i>Pomona Farming, LLC</i>	135	7-1	2002	Grape, Wine	Zinfandel (135 Ac.)	Crop 7 x Row 11	T15S R13E S7	
G	<b>63009</b> <i>Pomona Farming, LLC</i>	77	9-3	2004	Grape, Wine	Muscat (77 Ac.)	Crop 7 x Row 18	T15S R13E S9	
G	<b>63010</b> <i>Pomona Farming, LLC</i>	150	12-4	2019	Grape, Wine	Muscat (150 Ac.)	Crop 7 x Row 18	T15S R12E S12	
G	<b>63011</b> <i>Pomona Farming, LLC</i>	75	17-1	1999	Grape, Wine	Zinfandel (75 Ac.)	Crop 7 x Row 11	T15S R13E S17	



Facility Boundary    Grape, Wine    Almond    Pistachio







■ Grape, Wine   ■ Almond   ■ Pistachio   ■ Fallow







 Pistachio

