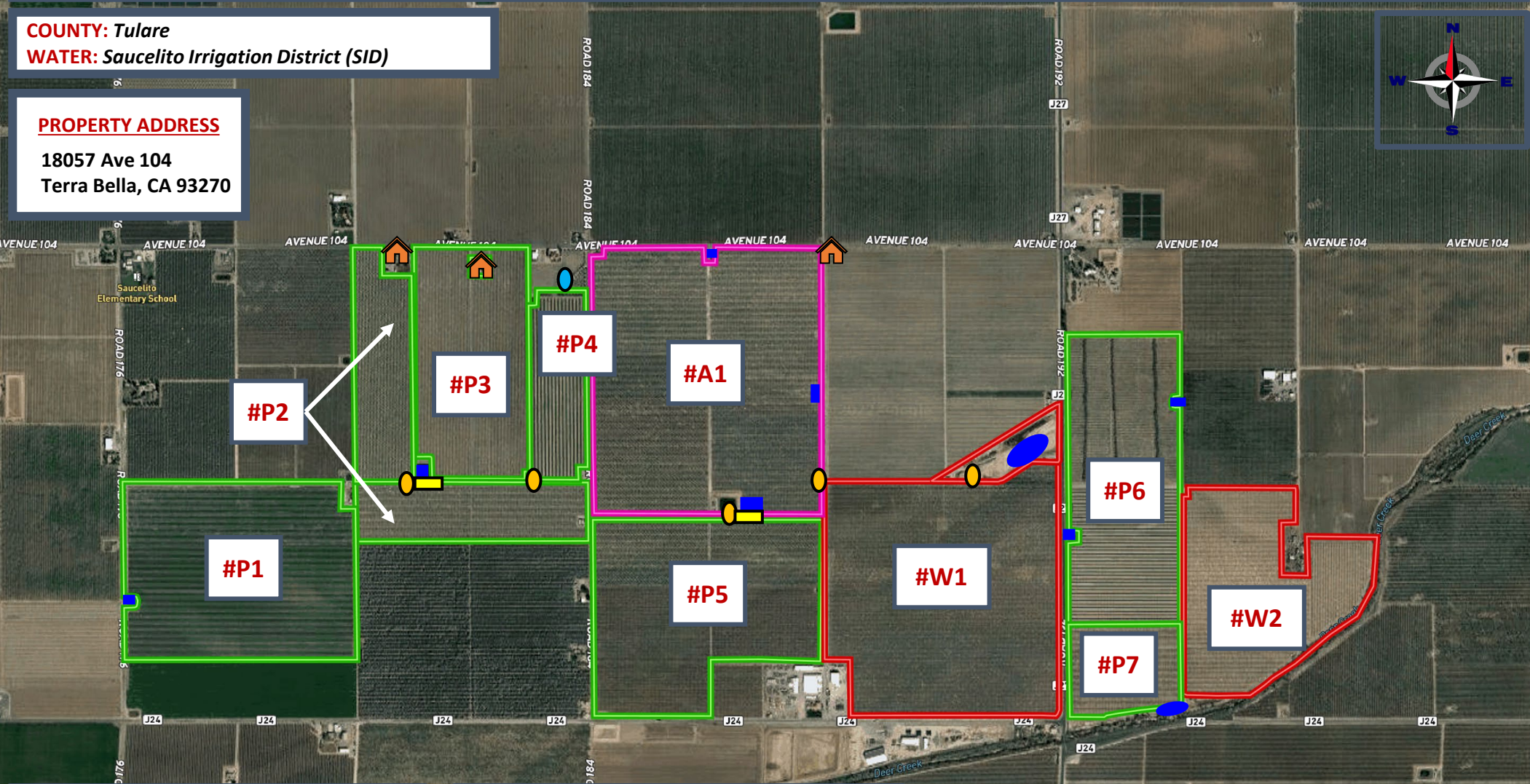


# N TERRA BELLA AG, LLC "MICKE RANCH"

**COUNTY:** Tulare  
**WATER:** Saucelito Irrigation District (SID)

**PROPERTY ADDRESS**

18057 Ave 104  
 Terra Bella, CA 93270



**ALMOND BLOCKS**

Block #	Acres	Variety	Rootstock	Spacing	Year
#A1	172.60	Independence	TBD	20' x 16'	2023
<b>Total:</b>	<b>172.60</b>				

**PISTACHIO BLOCKS**

Block #	Acres	Variety	Rootstock	Spacing	Year
#P1	112.18	Lost Hills	UCB-1	20' x 16'	2020
#P2	78.06	Lost Hills	UCB-1	20' x 16'	2023
#P3	73.14	Kerman	UCB-1	20' x 16'	2006
#P4	28.95	Kerman	UCB-1	20' x 16'	2020
#P5	112.78	Lost Hills	UCB-1	20' x 16'	2023
#P6	91.87	Golden Hills	UCB-1	20' x 16'	2021
#P7	29.19	Lost Hills	UCB-1	20' x 16'	2022
<b>Total:</b>	<b>526.17</b>				

\* For Block #P2 & #P5 - the pollinating variety is 75% Randy on UCB-1. The remaining 25% being Tejon on UCB-1.

**WALNUT BLOCKS**

Block #	Acres	Variety	Spacing	Year
#W1	154.88	Tulare	22' x 18'	2011
#W2	75.55	Tulare	22' x 18'	2014
<b>Total:</b>	<b>230.43</b>			

**ACREAGE SUMMARY**

<b>Total Gross Acres:</b>	<b>999.12</b>
<b>Total Planted Acres:</b>	<b>929.20</b>
<b>Total Pistachio Acres:</b>	<b>526.17</b>
<b>Total Walnut Acres:</b>	<b>230.43</b>
<b>Total Almond Acres:</b>	<b>172.60</b>