

Rancho Cuervo, LLC | ORGANIC ALMONDS

County: Fresno
Water District: Laguna Irrigation District

[CLICK TO VIEW WEB BASED MAP](#)

Main entrance for Block's that are North of the High-Speed Rail.

Main entrance for Block's that are South of the High-Speed Rail.

GROSS ACRES: 635.32
NET ACRES: 612.00

-  = WELL / PUMP
-  = FILTER STATION
-  = GATE / ENTRANCE
-  = SHOP

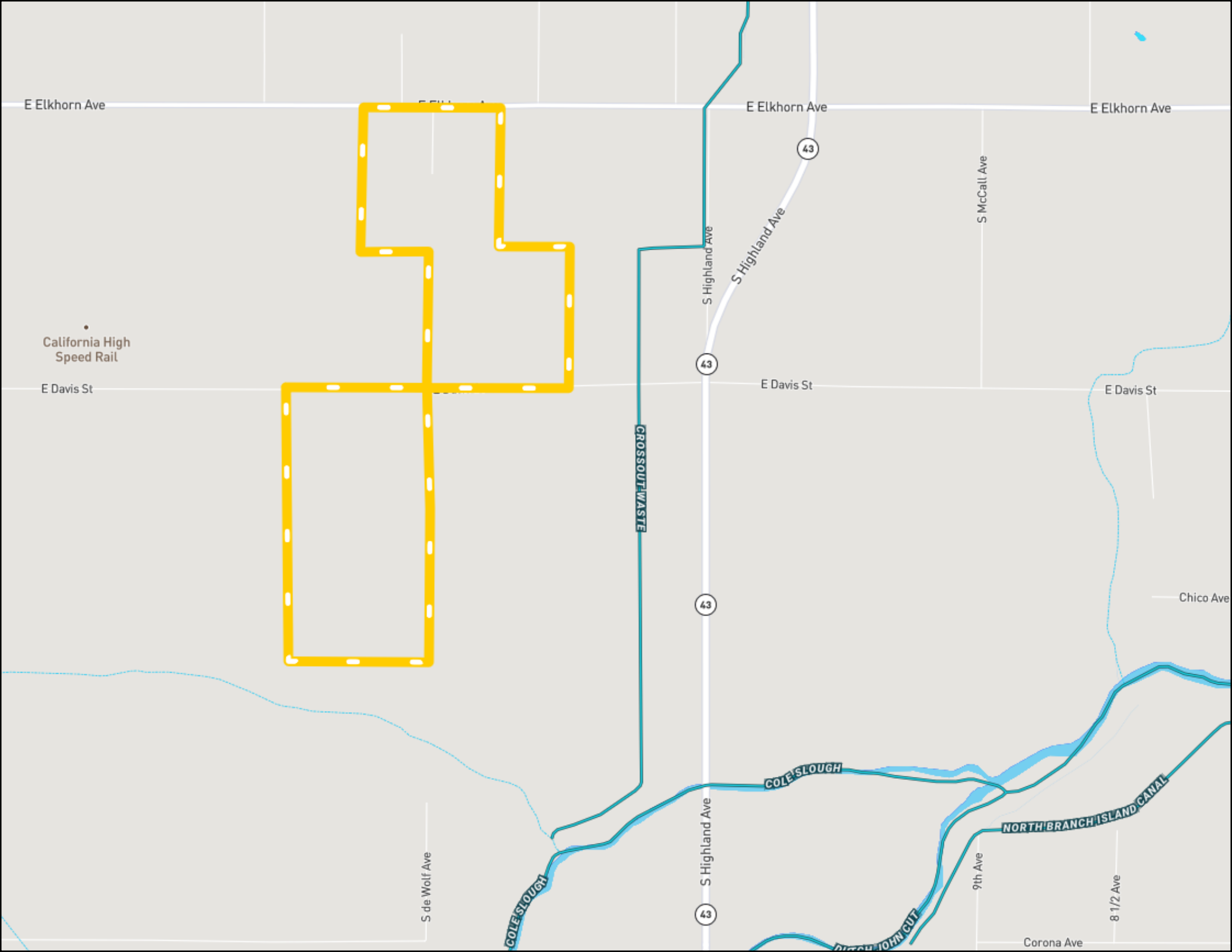
Block #	Variety	Rootstock	Spacing	Year	Acres
#1	Butte Padre	Hansen	22' x 15'	2022	78.50
#2	Butte Padre	Hansen	22' x 15'	2022	80.25
#3	Butte Padre	Nemaguard	23' x 18'	2008	71.25
#4	Butte Padre	Nemaguard	23' x 18'	2008	69.00
#5	Nonpareil Monterey	Hansen	23' x 18'	2008	16.00
#6	Butte Padre	Nemaguard	23' x 18'	2008	35.00
#7	Nonpareil Price	Nemaguard	23' x 18'	2008	38.00
#8	Independence	Viking	23' x 15'	2016	35.60
#9	Nonpareil Price	Nemaguard	23' x 18'	2008	34.25
#10	Butte Padre	Nemaguard	23' x 18'	2008	76.70
#11	Nonpareil Price	Nemaguard	23' x 18'	2008	77.45

Total Planted Acres:

612.00

PROPERTY ADDRESS

7605 E. Elkhorn Ave.
Selma, CA 93662



E Elkhorn Ave

E Elkhorn Ave

E Elkhorn Ave

California High Speed Rail

E Davis St

E Davis St

E Davis St

Chico Ave

S de Wolf Ave

S Highland Ave

9th Ave

8 1/2 Ave

Corona Ave

CROSSCUT WASTE

COLE SLOUGH

NORTH BRANCH ISLAND CANAL

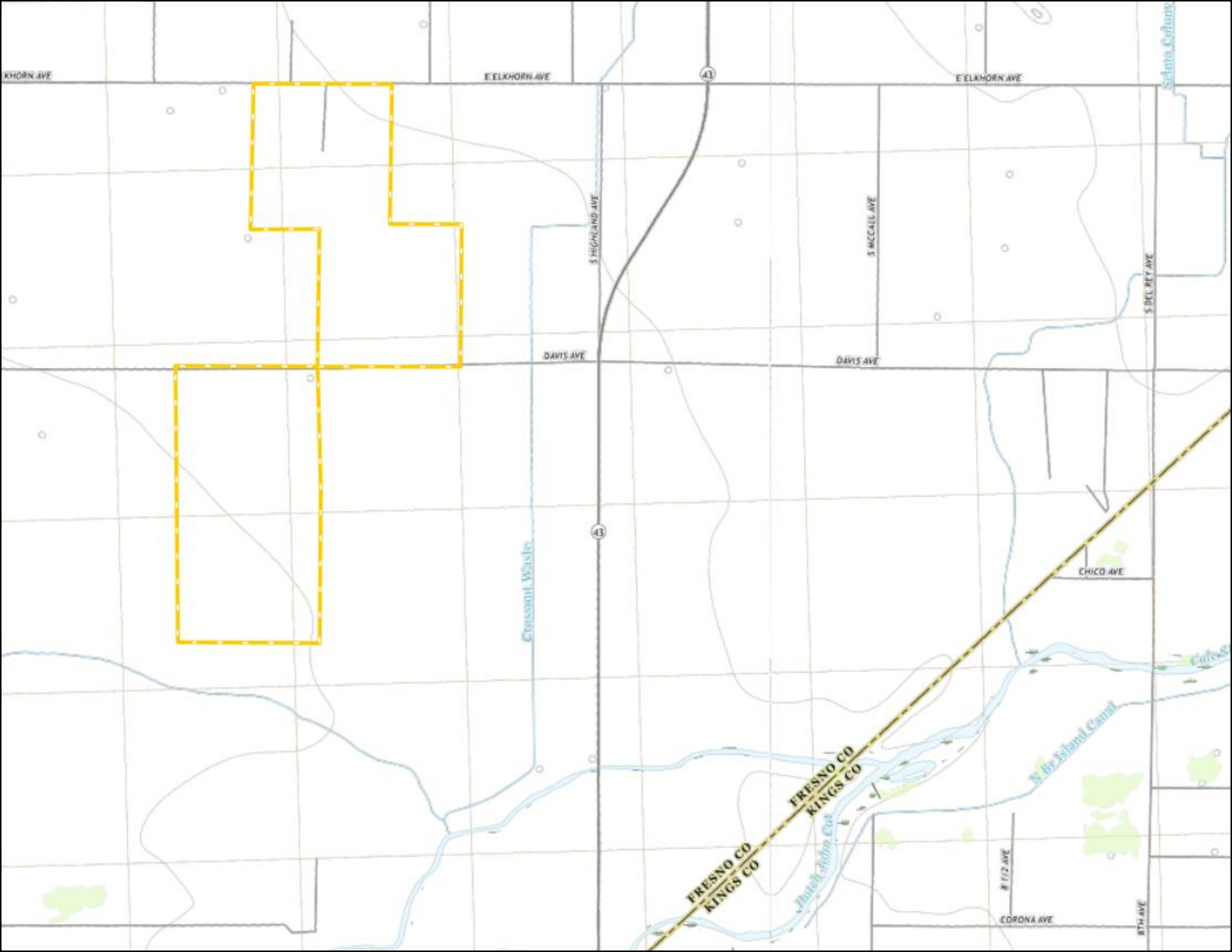
DITCH JOHN CUT

43

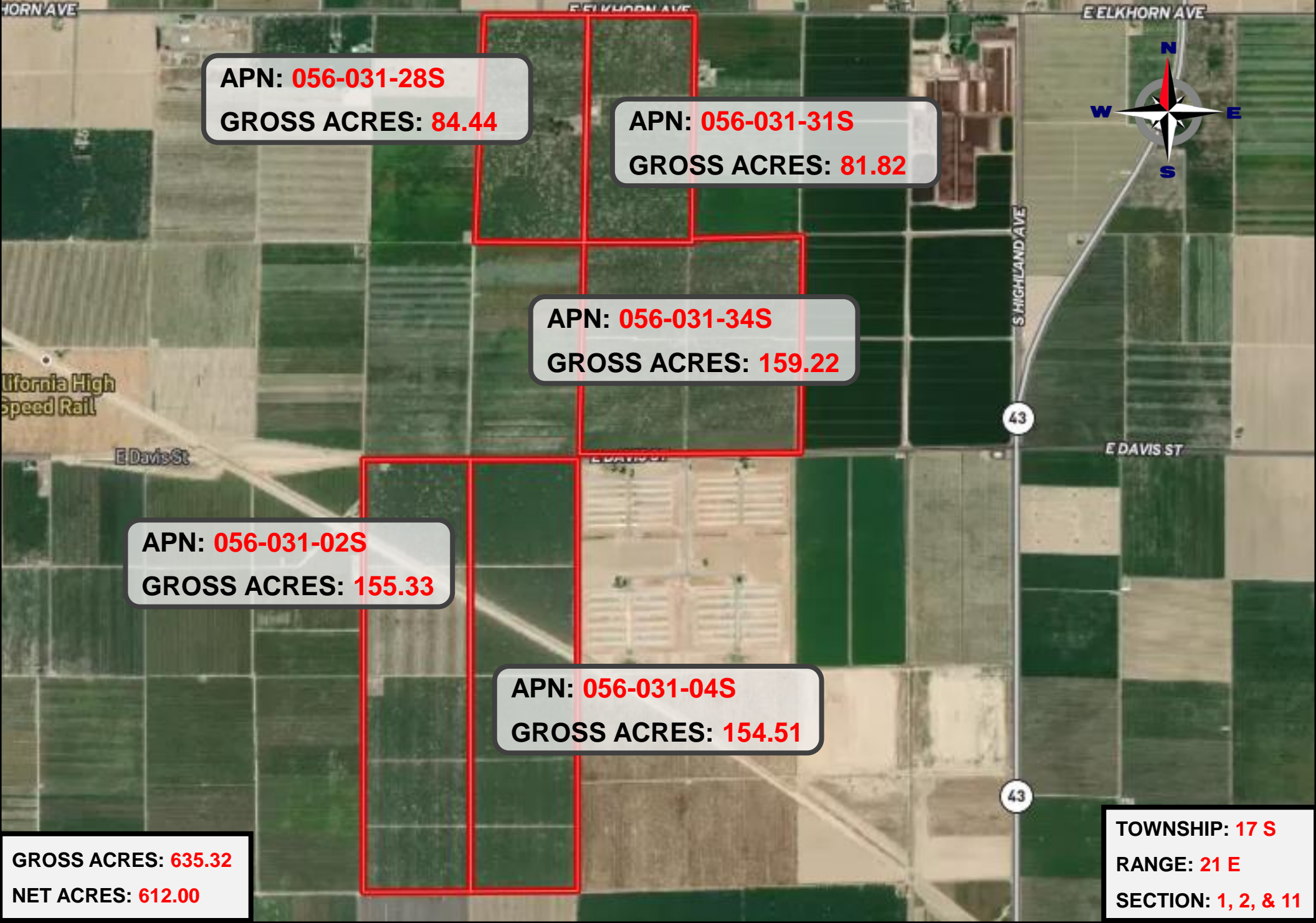
43

43

43



APN MAP DETAILS | FRESNO COUNTY



APN: **056-031-28S**
GROSS ACRES: **84.44**

APN: **056-031-31S**
GROSS ACRES: **81.82**

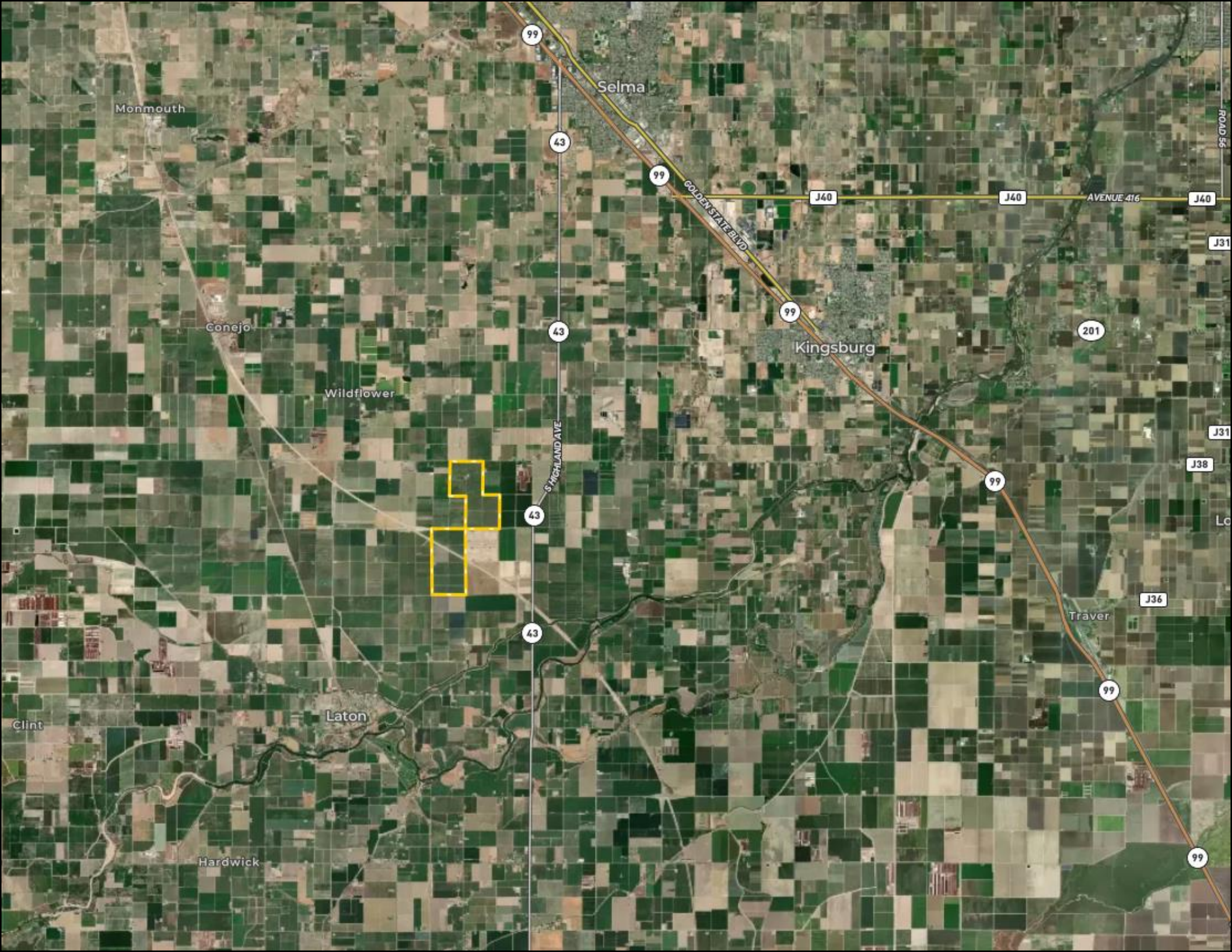
APN: **056-031-34S**
GROSS ACRES: **159.22**

APN: **056-031-02S**
GROSS ACRES: **155.33**

APN: **056-031-04S**
GROSS ACRES: **154.51**

GROSS ACRES: **635.32**
NET ACRES: **612.00**

TOWNSHIP: **17 S**
RANGE: **21 E**
SECTION: **1, 2, & 11**



Monmouth

Selma

Conejo

Wildflower

Kingsburg

Laton

Clint

Hardwick

Traver

99

43

43

43

43

99

99

99

201

99

99

J40

J40

J40

J31

J31

J38

J36

ROAD 55

GOLDEN STATE BLVD

AVENUE 416

S HICKLAND AVE