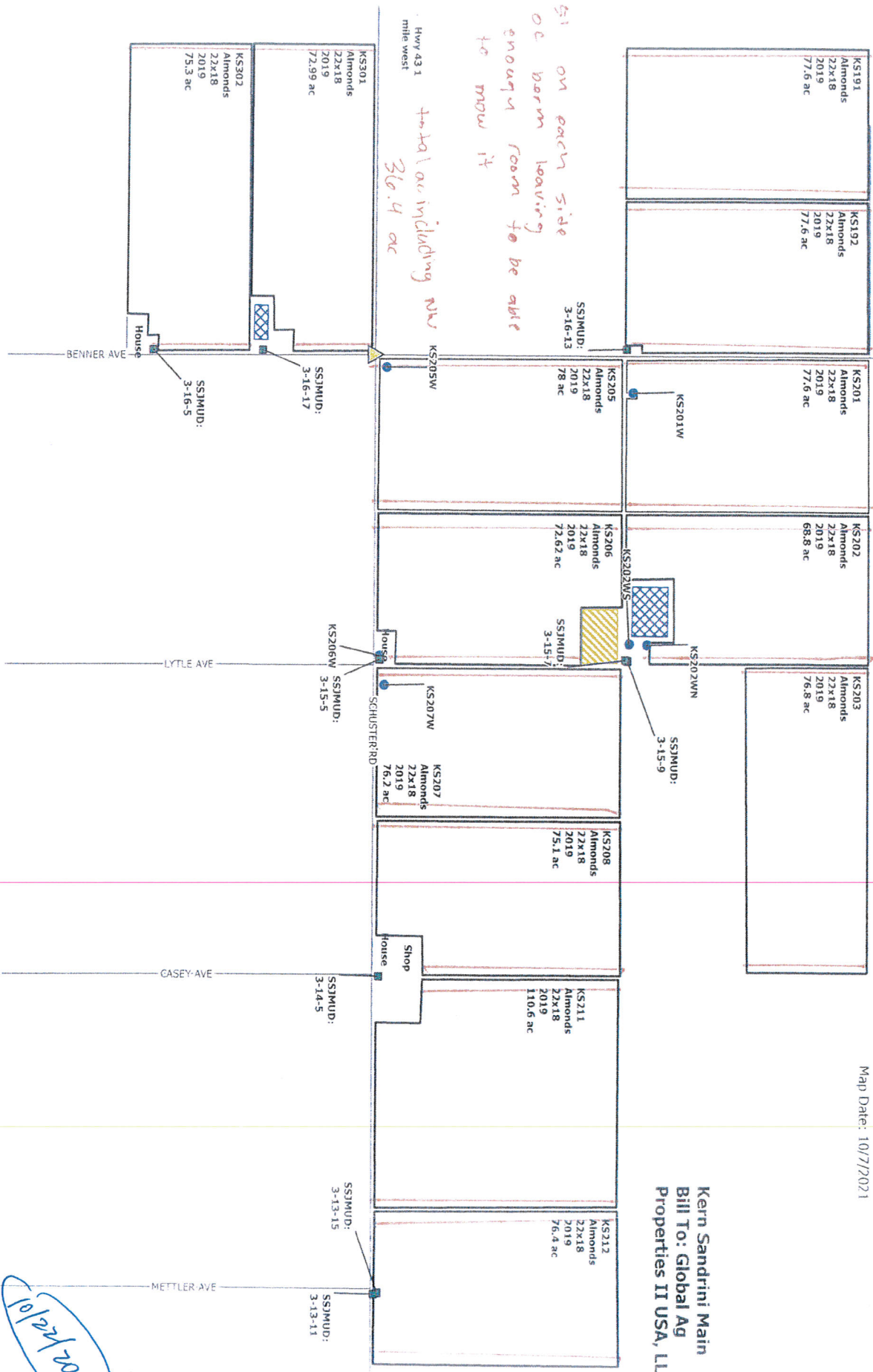


115.01

5' on each side
of barn leaving
enough room to be able
to move it

total area including new
36.4 ac



Kern Sandrini Main
Bill To: Global Ag
Properties II USA, LLC

Kern Sandrini Main
In case of an emergency dial 911
Then Call Safety:
Lennie Barbosa @ 661-438-9494
Baldo Tovar @ 661-978-6068
Map Date: 10/7/2021

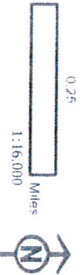
HEC - Meet Locations

Reservoirs

Solar

Surface Water Turnout

Well



10/27/2021