

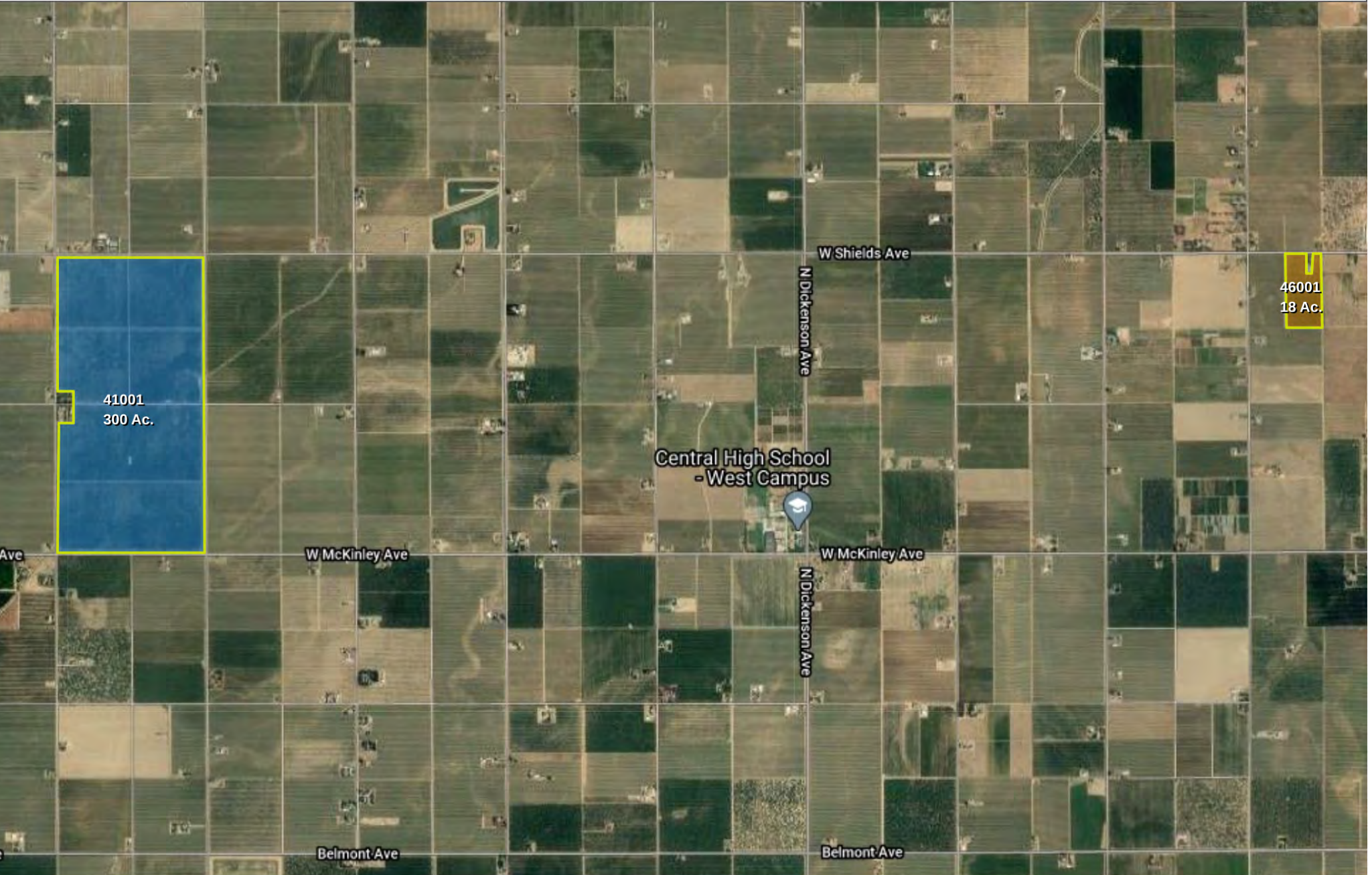
- Almond
- Grape, Raisin
- Walnut





## Fields

	Field Name	Acres	Old Ranch Name	Plant Date	Crop	Variety/Rootstock (acres)	Spacing	TRS	APN
<b>Fresno</b>									
A	<b>41001</b> <i>Pomona Farming, LLC</i>	300	Biola 304A-304B	2009	Almond	Nonpareil (150 Ac.), Monterey (150 Ac.)	Crop 12 x Row 24	T13S R18E S28	
A	<b>41002</b> <i>Pomona Farming, LLC</i>	640	Verve(1) 218-1-4	2020	Almond	Monterey/Hansen (320 Ac.), Nonpareil/Hansen (320 Ac.), Nonpareil (320 Ac.), Monterey (320 Ac.)	Crop 14 x Row 22	T19S R18E S18	
A	<b>41003</b> <i>Pomona Farming, LLC</i>	320	Verve(2-3) 2B-18, SB-19	2018	Almond	Independence/Hansen (320 Ac.), Independence (320 Ac.)	Crop 14 x Row 22	T20S R18E S8	
A	<b>41004</b> <i>Pomona Farming, LLC</i>	32	Verve(4) 2B-26	2018	Almond	Sonora/Hansen (16 Ac.), Sonora (16 Ac.), Nonpareil (16 Ac.), Nonpareil/Hansen (16 Ac.)	Crop 14 x Row 22	T20S R18E S18	
A	<b>41005</b> <i>Pomona Farming, LLC</i>	940	Verve (5) 2B-21-26	2018	Almond	Nonpareil (470 Ac.), Monterey (470 Ac.), Nonpareil (470 Ac.), Monterey (470 Ac.)	Crop 14 x Row 22	T20S R18E S17	
W	<b>46001</b> <i>Pomona Farming, LLC</i>	18	Shields 303	2015	Walnut	Poindexter (18 Ac.)	Crop 24 x Row 18	T13S R19E S30	
A	<b>Jeffrey 17</b> <i>TAAP IV</i>	148	Jeffrey	2015	Almond	Nonpareil (74 Ac.), Supereil (74 Ac.)	Crop 16 x Row 22	T15S R20E S17	33502006S
G	<b>Sullivan</b> <i>Pomona Farming, LLC</i>	608	Sargent	2020	Grape, Raisin	Fiesta/Salt Creek (608 Ac.)		T19S R18E S13	06809046S, 06805016S



Almond Walnut

