



Myers Flying M Ranch
Merced County
Crop Map - Lower Bear
(LBR)
Woolf Enterprises

Net Acres	Plant Date
LBR 1	7/20/2015
LBR-1a	56
LBR-1b	51
LBR-1c	49
Subtotal	156
LBR 2	6/25/2015
LBR-2a	66
LBR-2b	42
LBR-2c	32
LBR-2d	10
Subtotal	150
LBR 3	10/18/2015
LBR-3a	40
LBR-3b	27
LBR-3c	59
LBR-3d	58
Subtotal	184
LBR 4	10/18/2015
LBR-4a	34
LBR-4b	33
LBR-4c	36
Subtotal	103
TUT 1	10/21/2019
TUT-1E	69.5
TUT-1W	57.5
Subtotal	127
Tuttle 2	10/21/2019
TUT-2	56.5
Tuttle 3	4/28/2020
TUT-3	41.5
Grand Total	818

Planting Notes:

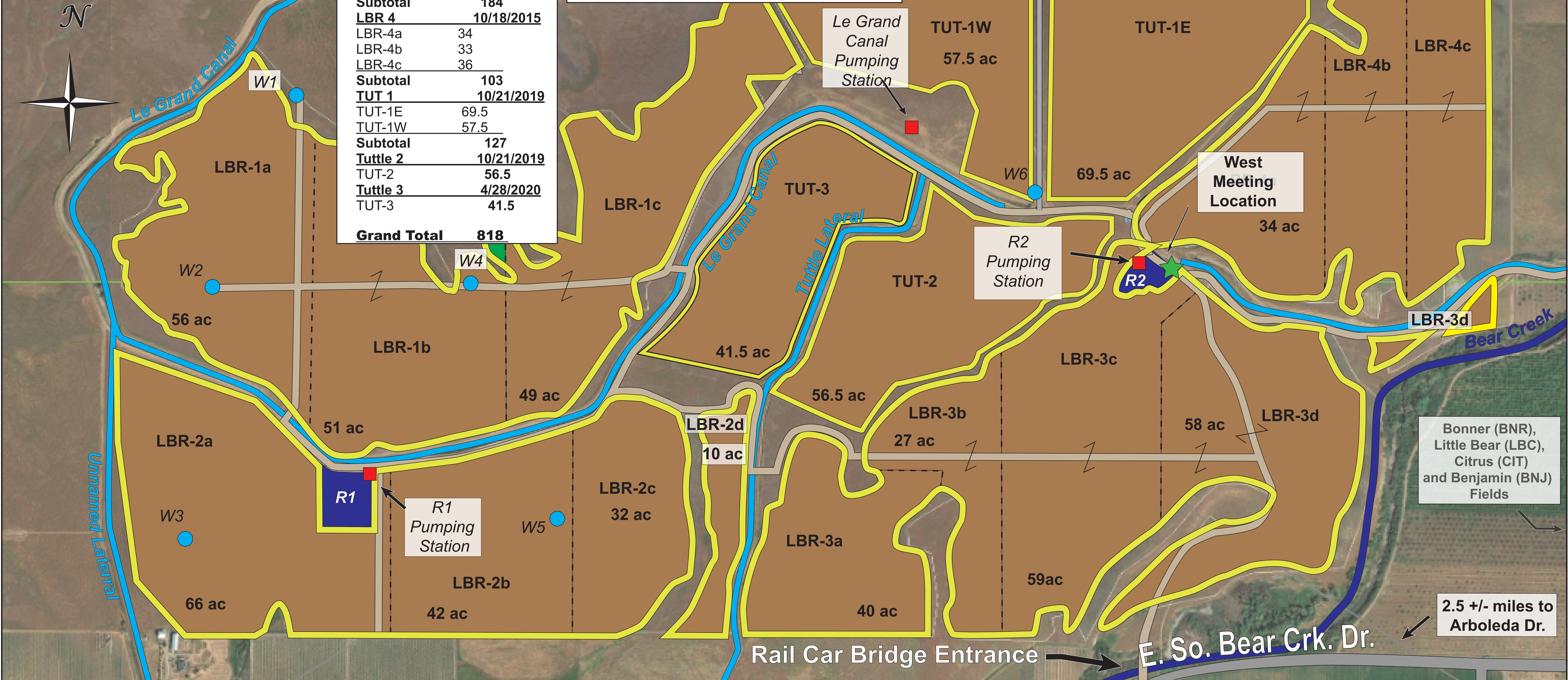
LBR
 Nursery - Duarte
 Rootstock - Hansen
 Spacing - 16' x 20'
 Variety Mix (LBR):
 50% NP, 25% Wood Colony, 25% Aldrich

Tuttle
 Nursery -
 Rootstock (1&2) - Hansen
 Rootstock (3) - NP Krymsk 86, Ind. Rootpack
 Variety Mix (Tuttle):
 50% NP, 50% Independence

AM Almonds

Legend:

- Block Boundary (dashed line)
- Dirt Road (thin grey line)
- Paved/Public Road (thick grey line)
- Creek (blue wavy line)
- Lift Pump/Pumping Station (red square)
- Meeting Location (green star)
- Updated: May 16, 2020
- Irrigation Canal (blue line)
- Reservoir (blue square)
- Well (blue circle)



Bonner (BNR),
 Little Bear (LBC),
 Citrus (CIT)
 and Benjamin (BNJ)
 Fields

2.5 +/- miles to
 Arboleda Dr.