

UNO FARMS, LLC | "QUAIL LAKES"

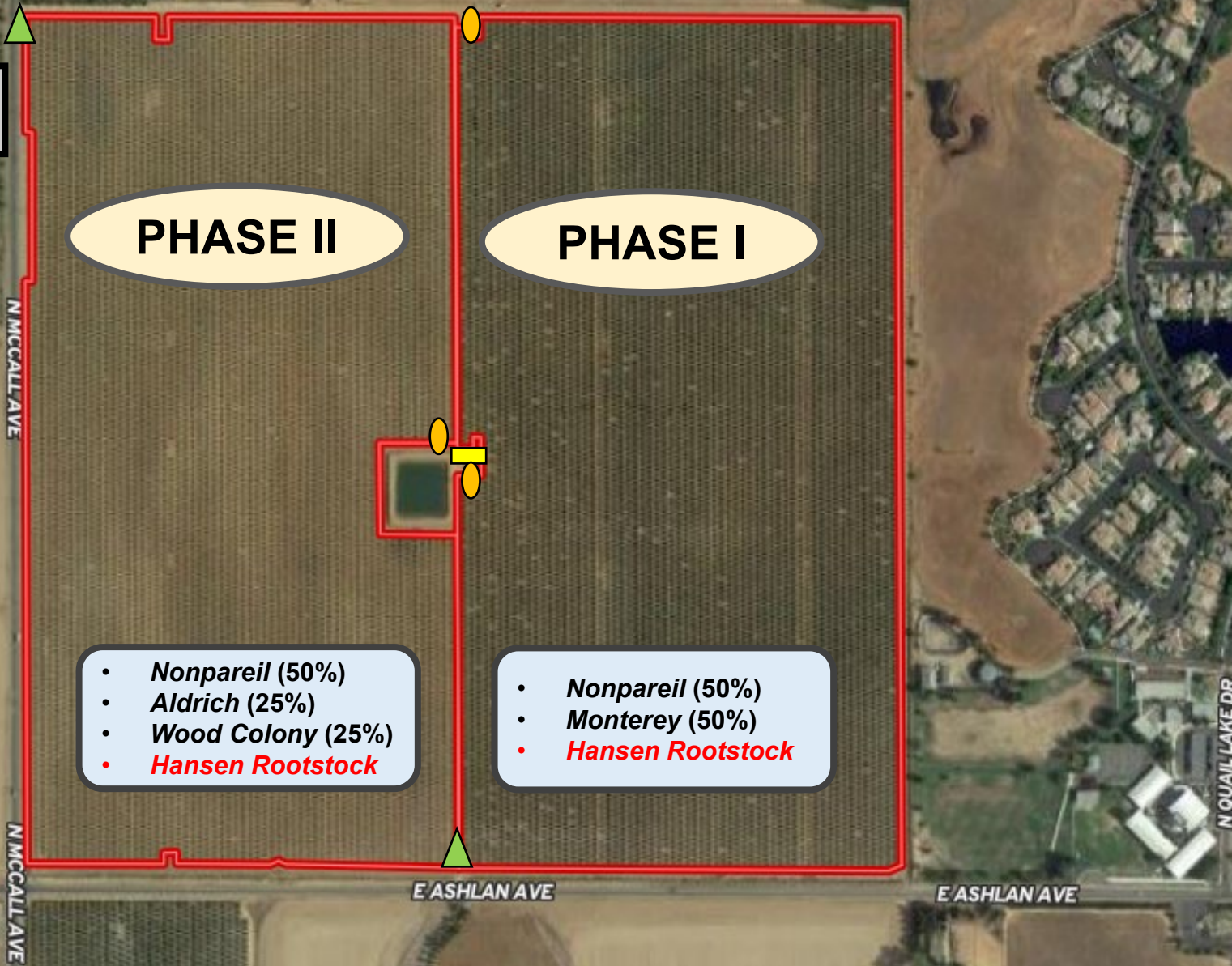
COUNTY: FRESNO
WATER: FRESNO IRRIGATION DISTRICT (FID)

PHASE II

PHASE I

- Nonpareil (50%)
- Aldrich (25%)
- Wood Colony (25%)
- Hansen Rootstock

- Nonpareil (50%)
- Monterey (50%)
- Hansen Rootstock



BLOCK #	ACRES	SPACING	YEAR
PHASE I	76.50	21' x 15'	OCT - 2016
PHASE II	78.00	21' x 13'	JUN - 2017
TOTAL ACRES:	154.50		

	=	WELL / PUMP
	=	FILTER STATION
	=	GATE

APN MAP DETAILS | FRESNO COUNTY

TOWNSHIP: 13 S

RANGE: 22 E

SECTION: 17

APN: 571 - 01 - 031

GROSS ACRES: 77.57

APN: 571 - 01 - 032

GROSS ACRES: 77.57

GROSS ACRES: 155.14

NET ACRES: 154.5

N MCCALL AVE

N MCCALL AVE

E ASHLAN AVE

E ASHLAN AVE

L LAKE DR

N QUAIL LAKE DR

SOIL MAP DETAILS

Capability Legend

Increased Limitations and Hazards

Decreased Adaptability and Freedom of Choice Users

Land, Capability



	1	2	3	4	5	6	7	8
'Wild Life'	•	•	•	•	•	•	•	•
Forestry	•	•	•	•	•	•	•	•
Limited	•	•	•	•	•	•	•	•
Moderate	•	•	•	•	•	•	•	•
Intense	•	•	•	•	•	•	•	•
Limited	•	•	•	•	•	•	•	•
Moderate	•	•	•	•	•	•	•	•
Intense	•	•	•	•	•	•	•	•
Very Intense	•	•	•	•	•	•	•	•

Grazing Cultivation

(c) climatic limitations (e) susceptibility to erosion
(s) soil limitations within the rooting zone (w) excess of water

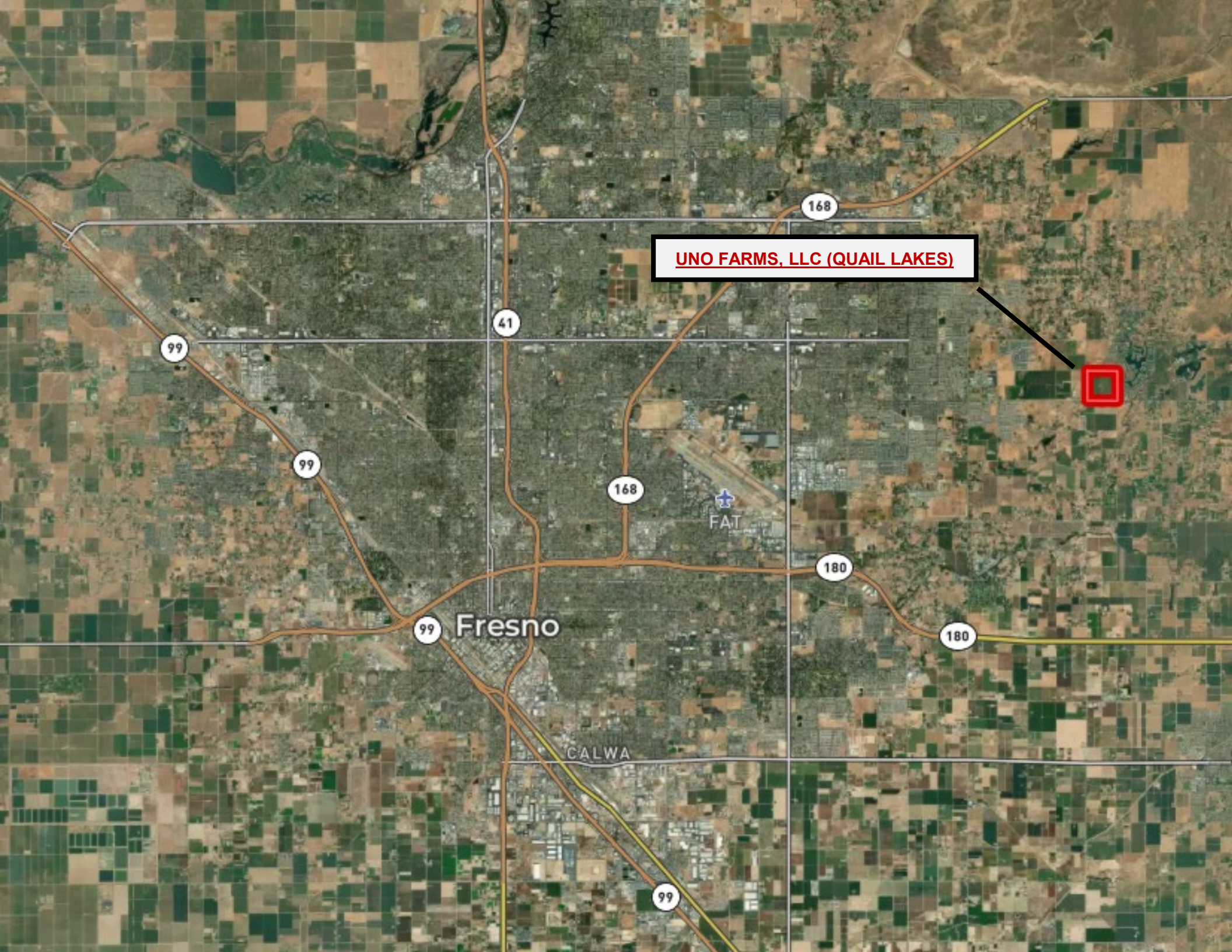


Phase I 76.50 ac

SOIL CODE	SOIL DESCRIPTION	ACRES	%	CPI	NCCPI	CAP
SgB	San Joaquin loam, shallow, 3 to 9 percent slopes	32.43	42.39	0	15	4e
SgA	San Joaquin loam, shallow, 0 to 3 percent slopes	17.38	22.72	0	15	4s
An	Alamo clay	14.86	19.42	0	10	4w
CzbB	Cometa loam, 2 to 9 percent slopes	5.27	6.89	0	17	4e
Hc	Hanford sandy loam	4.23	5.53	0	19	4s
Rc	Ramona loam	2.33	3.05	0	19	4c
TOTALS		76.50	100%	-	14.51	4.0

Phase II 78.00 ac

SOIL CODE	SOIL DESCRIPTION	ACRES	%	CPI	NCCPI	CAP
SgA	San Joaquin loam, shallow, 0 to 3 percent slopes	56.04	71.85	0	15	4s
SgB	San Joaquin loam, shallow, 3 to 9 percent slopes	10.51	13.48	0	15	4e
An	Alamo clay	9.60	12.31	0	10	4w
SdA	San Joaquin sandy loam, shallow, 0 to 3 percent slopes	1.75	2.24	0	11	4s
Hc	Hanford sandy loam	0.09	0.12	0	19	4s
TOTALS		78.00	100%	-	14.3	4.0



UNO FARMS, LLC (QUAIL LAKES)

