

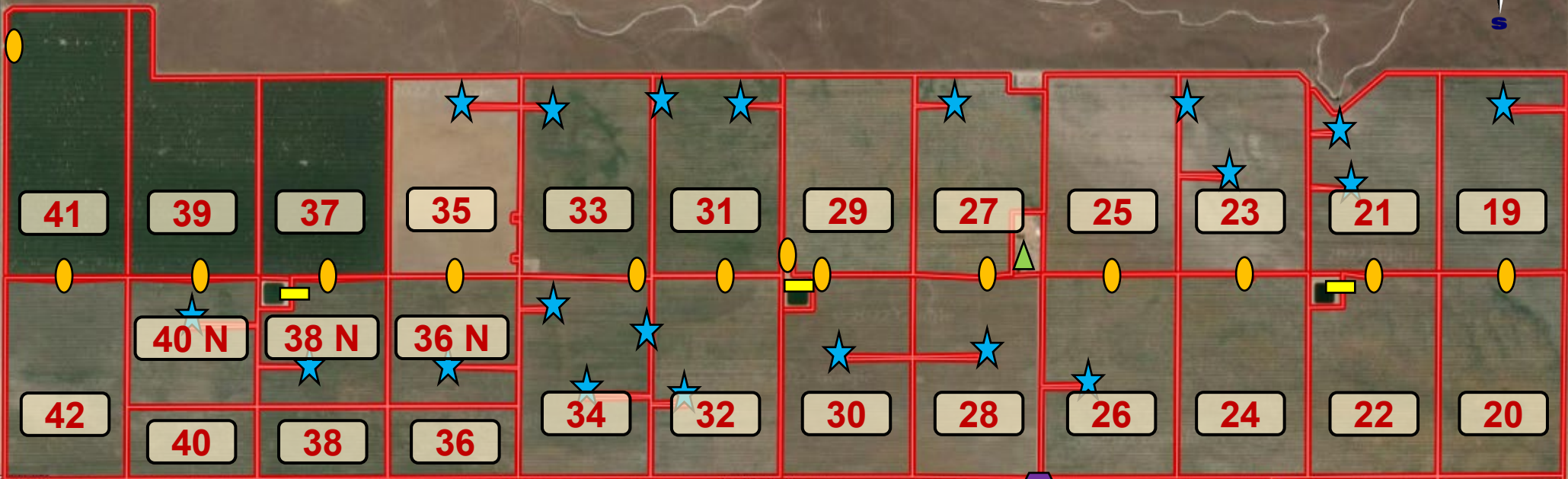
# WATERLAND VINEYARDS RAMPAGE, LLC | RAMPAGE

## PROPERTY ADDRESS

37999 Ave 13  
Madera, CA 93636

GROSS ACRES: 1,643.43

NET ACRES: 1,543.00



### ALMONDS

BLOCK	VARIETY	ACRES	SPACING	ROOTSTOCK	YEAR
37	NP (50%)   MON (25%)   WC (25%)	57.0	22' x 15'	Hansen	2015
39	NP (50%)   MON (25%)   WC (25%)	58.0	22' x 15'	Hansen	2015
41	NP (50%)   MON (25%)   WC (25%)	72.0	22' x 15'	Hansen	2015
45	NP (50%)   MON (25%)   WC (25%)	93.0	* 22' x 15'	Hansen	2014

TOTAL: 280.0

\* NP & MON Spacing = 22' 15'. Wood Colony Spacing = 22' x 12'

### ACRES BY CROP

CROP	ACRES
Almonds	280.0
Wine Grapes	1,263.0
<b>TOTAL:</b>	<b>1,543.0</b>

### WINE GRAPES

BLOCK	VARIETY	ACRES	SPACING	ROOTSTOCK	YEAR	BLOCK	VARIETY	ACRES	SPACING	ROOTSTOCK	YEAR
19	Barbera	56.0	9.5' x 6'	Freedom	2019	32	Chardonnay	57.0	10' x 6'	Freedom	2019
20	Zinfandel	57.0	11' x 7'	Freedom	2004	33	Chardonnay	56.0	10' x 5'	1103-P	2018
21	Barbera	53.0	9.5' x 6'	Freedom	2019	34	Chardonnay	58.0	10' x 6'	Freedom	2019
22	Zinfandel	57.0	11' x 7'	Dogridge	2004	35	Chardonnay	56.0	10' x 6'	1103-P	2021
23	Grenache	57.0	9.5' x 6'	Freedom	2019	36 N	Chardonnay	38.0	10' x 6'	Freedom	2019
24	Zinfandel	58.0	11' x 7'	Dogridge	2004	36	Chardonnay	20.0	10' x 6'	Freedom	1998
25	Grenache	58.0	9.5' x 6'	Freedom	2019	38 N	Chardonnay	38.0	10' x 6'	Freedom	2019
26	Zinfandel	59.0	11' x 7'	Dogridge	2004	38	Chardonnay	20.0	10' x 6'	Freedom	1998
27	Zinfandel	51.0	11' x 7'	Dogridge	2004	40 N	Chardonnay	38.0	10' x 6'	Freedom	2019
28	Muscat Canelli	56.0	10' x 5'	Freedom	2019	40	Chardonnay	20.0	10' x 6'	Freedom	1998
29	Zinfandel	57.0	11' x 7'	Dogridge	2004	42	Chardonnay	55.0	10' x 6'	Freedom	1995
30	Muscat Canelli	58.0	10' x 5'	Freedom	2019	43	Zinfandel	25.0	11' x 5'	Dogridge	2004
31	Chardonnay	56.0	10' x 5'	1103-P	2018	44	Zinfandel	49.0	11' x 5'	Freedom	2004

TOTAL: 733.0

530.0

### ACRES BY VARIETY (VINES)

VARIETY	ACRES
Barbera	109.0
Chardonnay	512.0
Grenache	115.0
Muscat Canelli	114.0
Zinfandel	413.0
<b>TOTAL:</b>	<b>1,263.0</b>

- = Well/Pump
- = Filter Station
- = Wind Machine
- = Shop
- = Main Entrance



# APN MAP DETAILS | MADERA COUNTY

APN: **049-010-002**

GROSS ACRES: **1,469.20**

APN: **049-650-001**

GROSS ACRES: **96.03**

APN: **049-650-021**

GROSS ACRES: **78.20**

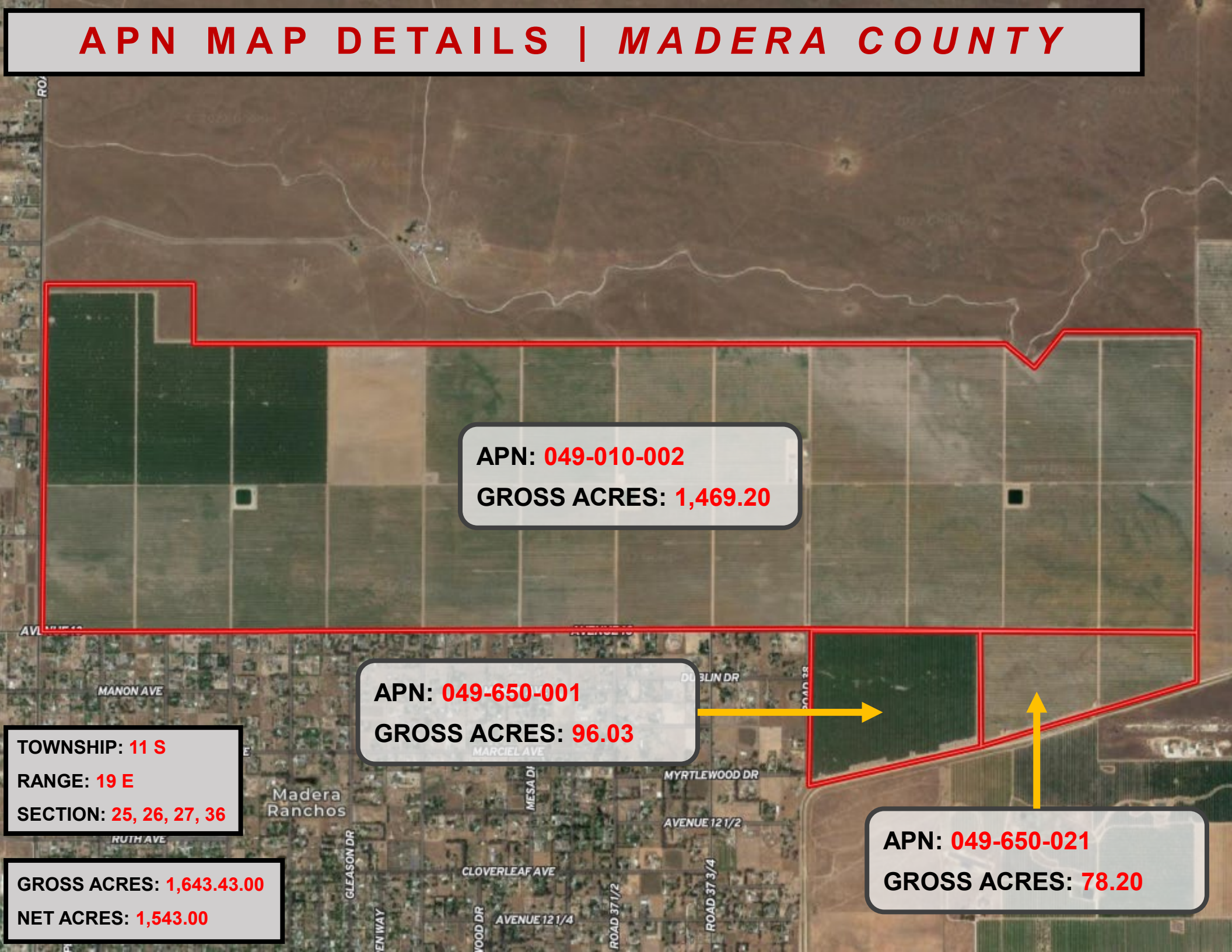
TOWNSHIP: **11 S**

RANGE: **19 E**

SECTION: **25, 26, 27, 36**

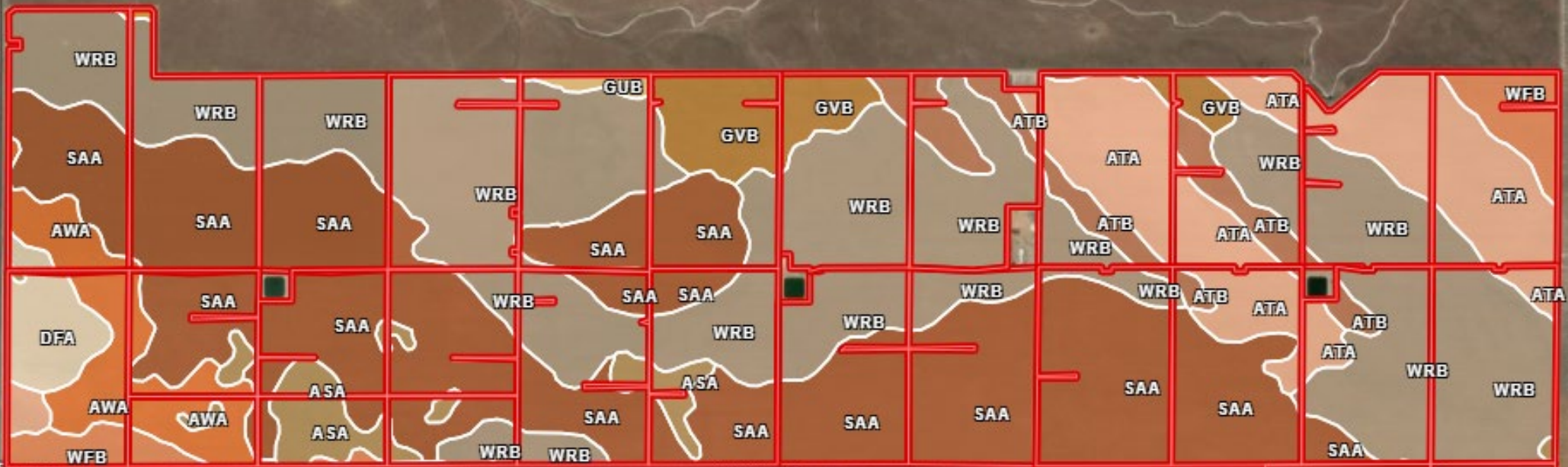
GROSS ACRES: **1,643.43.00**

NET ACRES: **1,543.00**





# SOIL MAP DETAILS



All Polygons 1543.00 ac

SOIL CODE	SOIL DESCRIPTION	ACRES	%	CPI	NCCPI	CAP
SaA	San Joaquin sandy loam, 0 to 3 percent slopes, MLRA 17	574.92	37.26	0	14	4s
WrB	Whitney and Rocklin sandy loams, 3 to 8 percent slopes	561.03	36.36	0	20	4e
AtA	Atwater loamy sand, 0 to 3 percent slopes, MLRA 17	150.75	9.77	0	15	4s
AwA	Atwater loamy sand, moderately deep and deep over hardpan, 0 to 3 percent slopes	54.47	3.53	0	18	4e
AtB	Atwater loamy sand, 3 to 8 percent slopes, MLRA 17	52.92	3.43	0	14	4e
GvB	Greenfield sandy loam, moderately deep and deep over hardpan, 3 to 8 percent slopes	47.99	3.11	0	20	4e
AsA	Alamo clay, 0 to 1 percent slopes	36.72	2.38	0	23	4w
WfB	Whitney fine sandy loam, 3 to 8 percent slopes	34.56	2.24	0	18	4e
DfA	Delhi sand, moderately deep and deep over hardpan, 0 to 3 percent slopes	23.45	1.53	0	11	4e
GuB	Greenfield sandy loam, 3 to 8 percent slopes	4.47	0.29	0	22	4e
MtB	Montpellier coarse sandy loam, 3 to 8 percent slopes	1.39	0.09	0	25	4e
HgA	Hanford sandy loam, moderately deep and deep over hardpan, 0 to 3 percent slopes	0.31	0.02	0	21	4s
<b>TOTALS</b>		<b>1,543.00</b>	<b>100%</b>	<b>-</b>	<b>16.9</b>	<b>4.0</b>







WATERLAND VINEYARDS RAMPAGE, LLC

CUATRO FARMS, LLC

HEADWATER INVESTMENTS, LLC

NERU PROPERTIES, LLC (MOIRA)

SUNDRIED FARMS, LLC (GRAVELLY FORD)