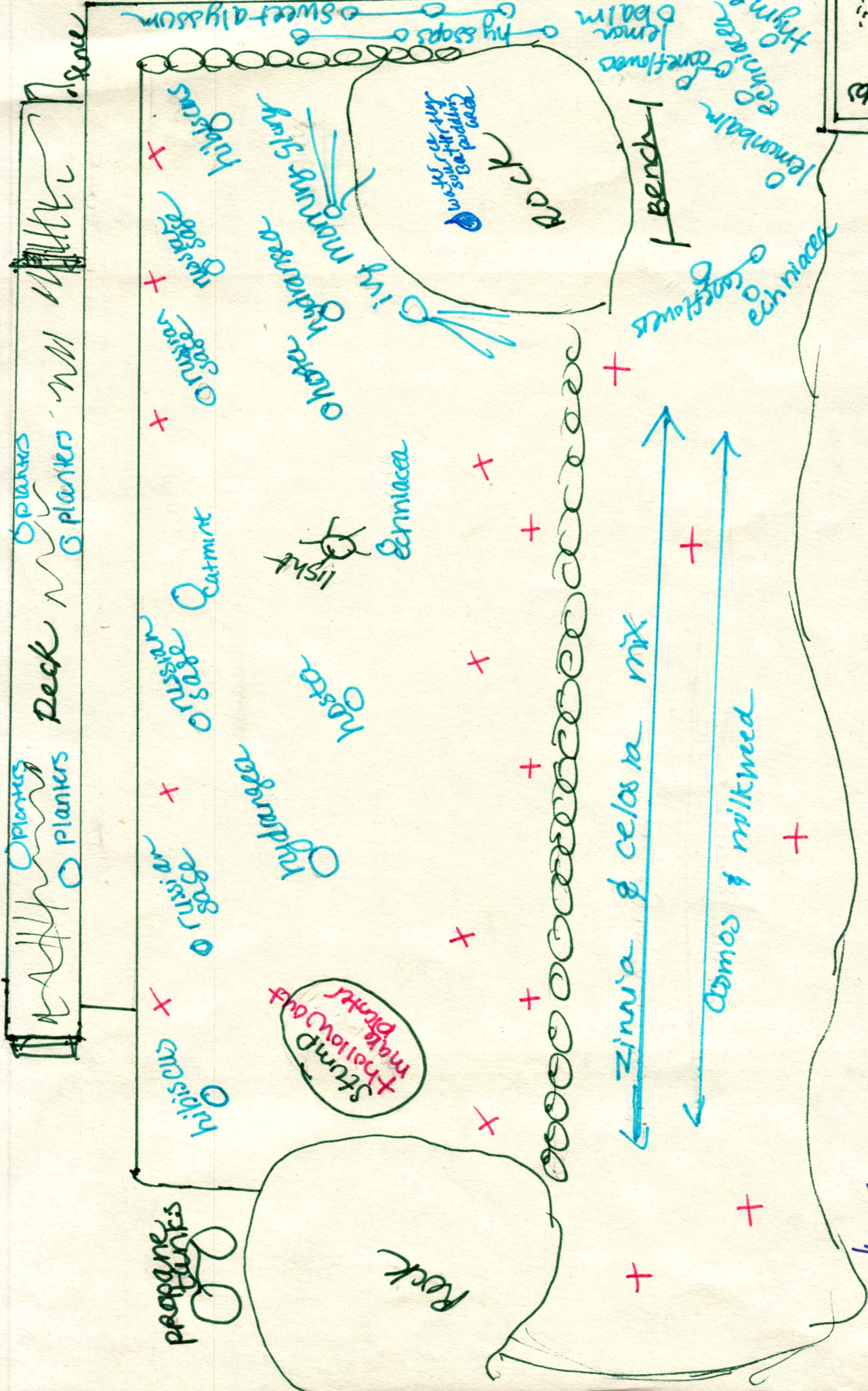




# Front Yard Garden Bed

Julie  
Bondeau



throughout  
+ tall grasses  
+ storage tubers + sedum  
+ sunflowers + low order

key  
+ add  
+ water source  
+ occurment plants

essie & herbs  
beds  
herbs, ferns  
300 ferns in 1 container



# fruit Guild / orchard

\*downward sloped area

July 2004



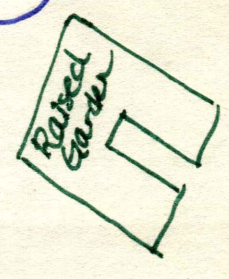


# Pond Area #2

NOTE: Match Areas with the "Plant Area" species/plant list document

Julie  
Ardour

Woods area 1  
Woods area 2  
Woods area 3

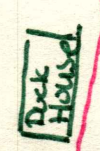


fruit guild orchard

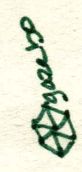
Native flower bed 3

Native flower bed 2

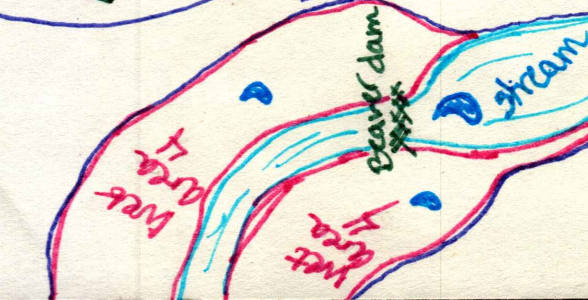
Native flower bed 1



egg waffles



Woods area 4



beaver dam

stream

Wet area 4

Wet area 5

Pond

water sources:  
- Pond  
- Stream  
- Wet areas

Wet area 7

Wet area 2

Wet area 1

Wet area 3

Woods area 5

Woods area 2

Woods area 6

Native flower only  
wildflower only

lightboxes



# Pond Area

Match area on map/diagram with species list.  
\*Not all plants have been identified.

## Native Flowerbed 1

- backeyed swans goldenrod
- jewelweed
- primrose
- flea bane

## Native Flowerbed 2

- milkweed
- blazing star
- bush weed (non-native)
- wild strawberry

## Native Flowerbed 3

- goldenrod
- asters
- st. John wort
- yarrow
- bee balm
- jewelweed
- primrose
- flea bane
- milkweed

## Wet Area 1

- boneset
- asters
- ferns
- high & low blueberry
- arrowwood
- dogwoods
- alders
- yarrow
- meadowsweet
- goldenrods
- jewelweed
- blue iris

## Wet Area 2

- asters
- goldenrod
- st. John wort
- sedges
- bulrush
- ferns
- arrowvine
- reeds
- meadowsweet
- dogwoods
- whitetop
- beech
- wakepepper
- burweed
- flea bane
- milkweed
- swamp candles
- cattails
- irises
- primrose
- marsh reedbox
- pimpernel
- ♡ lady slippers (see map)

## Wet Area 3

- +same as wet area 2
- alders
- beech
- starflower
- magnolia
- selfheal
- viburnum
- early meadow rue



## Pond Area cont.

### Wet Area 4

- Same as wet area 2
- cardinal flowers (red)
  - skullcap
  - arrowheads
  - woolgrass
  - cornwheat
  - jewelweed

### Woods Area 7

- pines
- alders
- blueberries
- cypress
- asters
- birch

### Woods Area 2

- silverrod
- high / low blueberries
- goldeneeds
- dewberry
- mayflower
- alders
- blackberries
- ferns
- pines
- asters
- hazelnut
- oaks
- beech
- maples
- strawberries
- yuiper
- birch
- starflower
- meadowsweet
- ~~goldenrod~~
- dogwood

### Woods Area 3

- + woods area 2
- wintergreen
- sarsaparilla
- chokecherry
- partridgeberry
- lilies
- sumac
- cornwheat
- wildoats
- black cherry
- aspen

### Woods Area 4

- ferns
- yarrow
- black cherry
- aspen
- goldenrod
- roses
- hazelnut
- tupelo
- maple
- dogwood
- asters
- viburnum
- flabane
- sheeplavrel
- alders
- beech
- pine
- low/high blueberries

~~@leabona~~

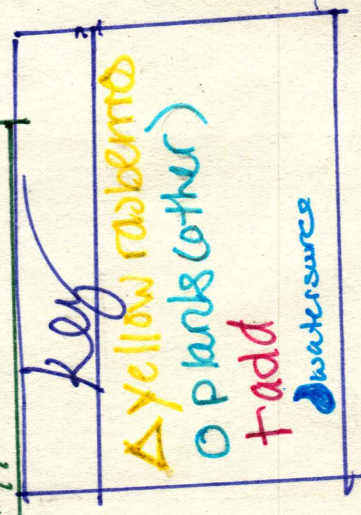
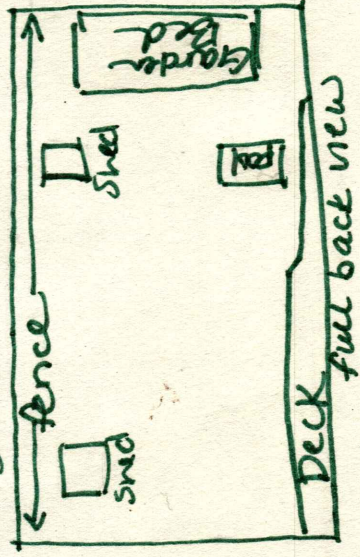


**NOTE:**  
 ◊ strawberries or nightshade  
 w/ yellow raspberries

# Back Deck Area

(for fence area see "grape area")

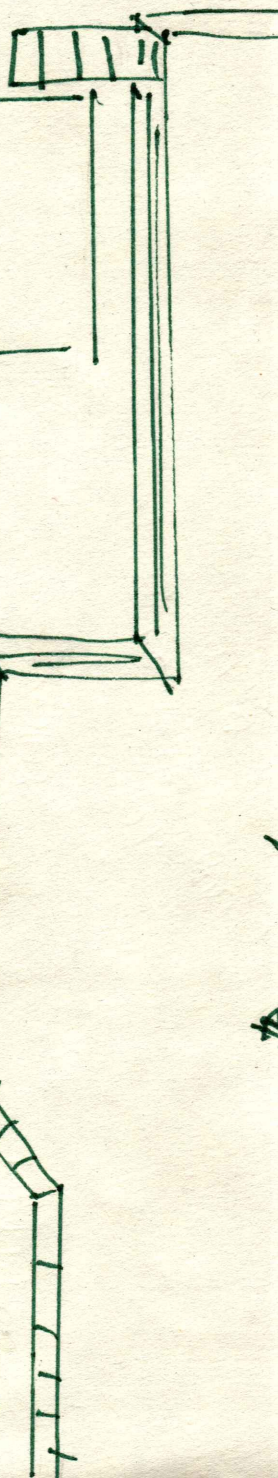
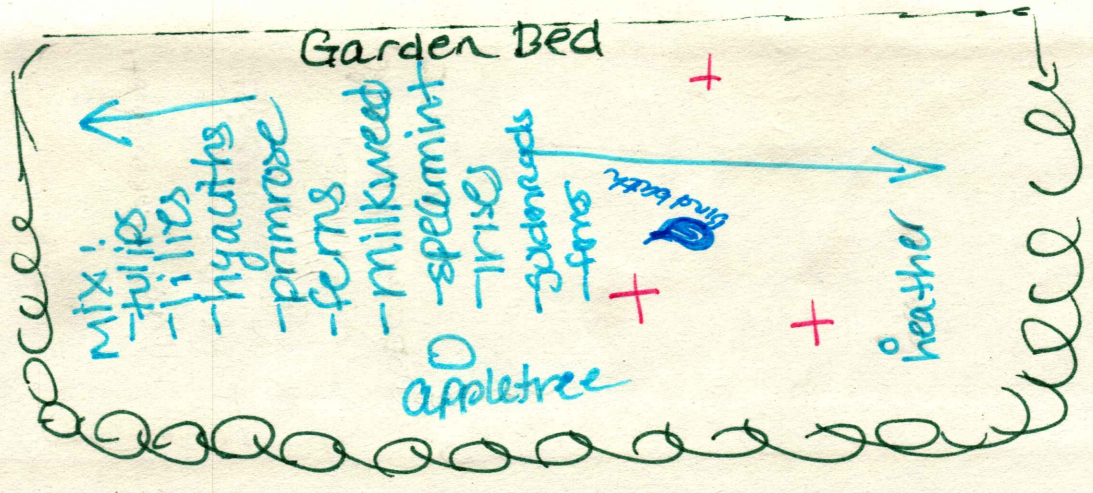
Julie Roudreau



Companions w/ yellow raspberries	Other adds
+ chamomile + chives + garlic + fennel + nasturtiums + parsley	+ sunflower + strawberries

Yam

- + nasturtiums
- + chives
- + nasturtiums
- + chives
- + garden
- + nasturtiums
- + yarrow
- + onion

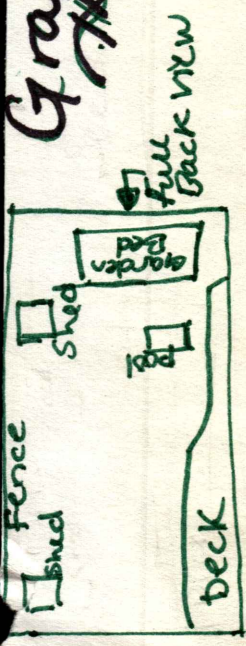




# Grape Area

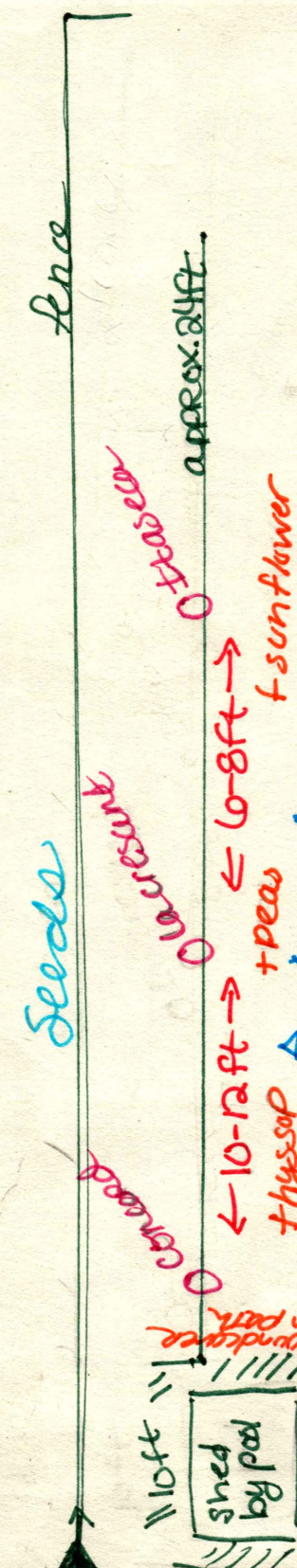
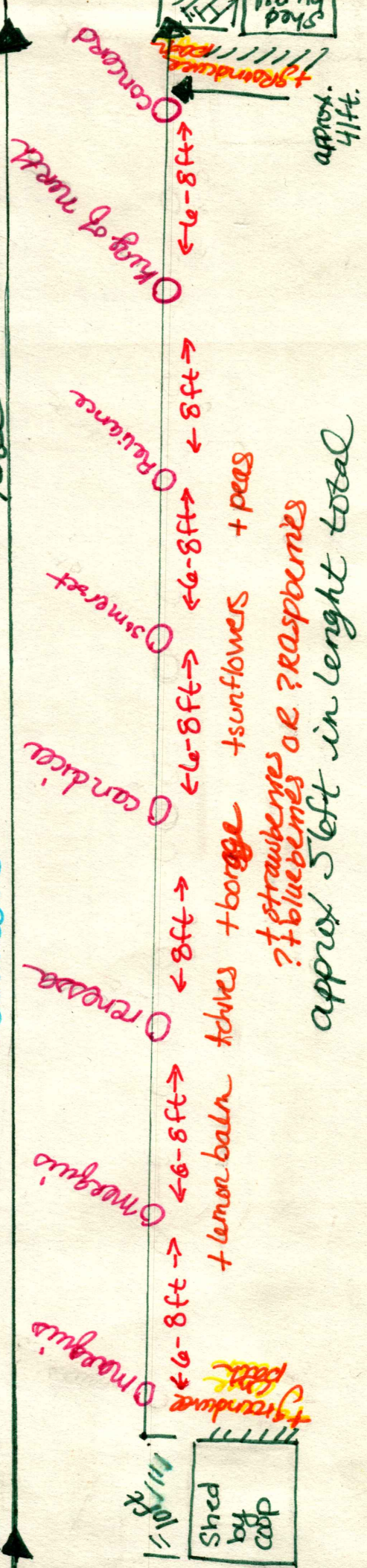
Julie  
Rondeau  
(backyard along  
fencing & sheds)  
grapes planted along  
fence 1-2 ft away

No Backyard



Seedless

fence



- Recommended companions w/ grapes
- + bee balm
  - + lemon balm
  - + mint
  - + thysop \*
  - + strawberries
  - + sunflower
  - + clover
  - + peas
  - + nasturtium
  - + herbs → garlic - rosemary

NOTE: - No strawberries w/ raspberries  
- No blackberries w/ raspberries  
- separate herbs  
- No blueberries w/ raspberries  
- No nasturtiums w/ raspberries