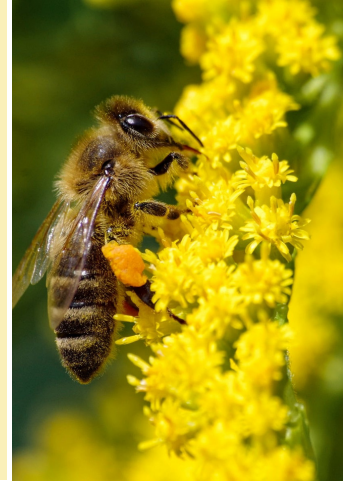


# Join the California Ag-Land Network for Pollinators and Get Money to Create and Maintain Pollinator Habitat

## Help your farm, dairy, or ranch while building connected habitat for California's pollinators

The **California Ag-Land Network for Pollinators (CAN for Pollinators)** is looking for producers who are enthusiastic about increasing pollinator habitat and receiving financial and technical support for implementing on-farm practices that support pollinators in California. Through a USDA NRCS Regional Conservation Partnership Program, CAN for Pollinators is offering contracts to distribute over **\$1,000,000** to California's farmers and ranchers to help them build habitat on their property. Pollinator Partnership and the CAN for Pollinators Team (see page 2) are eager to have you join the network as a producer-participant.



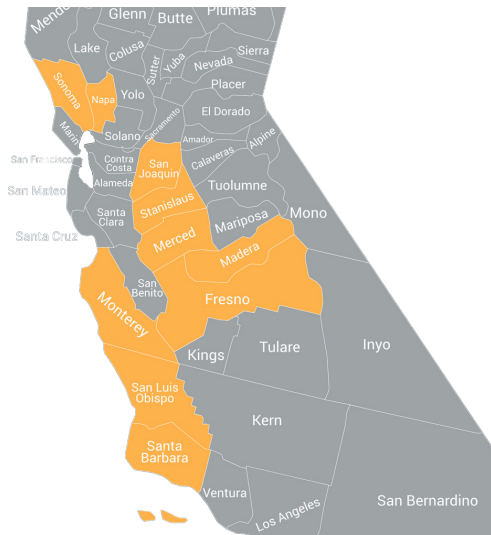
**Pollinators can provide significant benefits to CA producers like: increasing pollination efficacy, improving soil health and water retention, providing erosion control, sequestering carbon, and more.** Studies show that larger, more connected habitats provide even more ecological benefit. If we can create larger, contiguous habitats, we get more benefits for pollinators and more benefits for producers. Connected and contiguous habitats provide even more ecological benefit. More qualifying points will be awarded to growers with neighboring and/or adjacent applicants.

### What are the practices that are covered?

Farmers and ranchers can apply to get paid for the following practices:

#### Eligible Counties:

Fresno  
Madera  
Merced  
Monterey  
Napa  
San Luis Obispo  
San Joaquin  
Santa Barbara  
Sonoma  
Stanislaus



- **Cover Crops**
- **Conservation Cover**
- **Wildlife Habitat and Range Planting**
- **Hedgerow Planting**
- **Prescribed Grazing**
- **Micro-Irrigation**
- **Integrated Pest Management**
- **Tree-Shrub and Brush Establishment and Management**

## Become a Participating Producer in the California Ag-Land Network for Pollinators!

If you are interested in supporting bees and other pollinators, enhancing your operation, and collaborating with fellow farmers, please scan the QR Code and share with your neighbors!



*Funded through the Natural Resources Conservation Service (NRCS) Regional Conservation Partnership Program (RCP): Farmer-to-Farmer Collaboration - Increasing Pollinators Across Diverse California Farms and Ranches.*

# Benefits for Pollinators = Benefits for Farmers and Ranchers

Participating farmers and ranchers will receive technical assistance and reimbursements for new practices. Ideal candidates should be interested in the following:

- Increase in crop pollinators
  - More cost-effective pest control
  - Better ground water retention
  - Improved soil health
  - Enhanced land stewardship
  - Expanded market appeal and global market access
  - Desire to collaborate with fellow farmers and ranchers and promote stewardship with neighbors
  - Getting paid to implement on-farm practices that benefit pollinators
- \*Growers are not required to be interested in all practices or benefits to be eligible.



## How do I know if I can qualify, and how many practices I can apply for?

All growers and ranchers in the 10 designated California counties can apply. You must be EQIP-eligible, however, the Annual Gross Income restriction has been waived. You must be FSA registered or be able to do so. You may apply for any of the covered conservation practices, including first-year soil prep-practices prior to planting cover crop or habitat. Integrated Pest Management can also be an additional practice and is recommended. Prescribed grazing practices can be stand-alone or combined with range plantings.

**What do I need to do to get started?** First step is to join the **Pre-Application List** by scanning the QR code below to provide your contact information. We will contact you to give you more details, answer your questions, and send you an application.

## Collaborating Partners

The California Ag-Land Network for Pollinators includes the following partners to deliver technical assistance and reimbursement payments to producers.



## Become a Participating Producer in the California Ag-Land Network for Pollinators!

If you are interested in supporting bees and other pollinators, enhancing your operation, and collaborating with fellow farmers, please scan the QR Code and share with your neighbors!



Funded through the Natural Resources Conservation Service (NRCS) Regional Conservation Partnership Program (RCPP): Farmer-to-Farmer Collaboration - Increasing Pollinators Across Diverse California Farms and Ranches.

agriculture@pollinator.org • www.pollinator.org • 279-336-4137