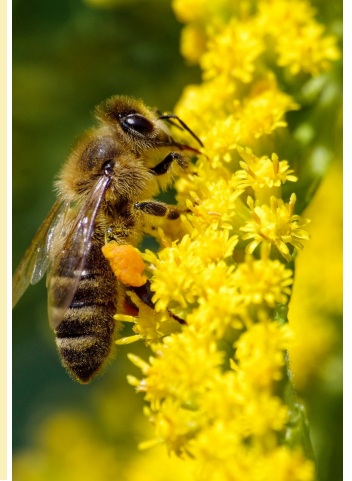


Join the California Ag-Land Network for Pollinators and Get Money to Create and Maintain Pollinator Habitat

Help your farm, dairy, or ranch while building connected habitat for California's pollinators

The **California Ag-Land Network for Pollinators (CAN for Pollinators)** is looking for producers who are enthusiastic about increasing pollinator habitat and receiving financial and technical support for implementing on-farm practices that support pollinators in California. Through a USDA NRCS Regional Conservation Partnership Program, CAN for Pollinators is offering contracts to distribute over **\$1,000,000** to California's farmers and ranchers to help them build habitat on their property. Pollinator Partnership and the CAN for Pollinators Team (see page 2) are eager to have you join the network as a producer-participant.



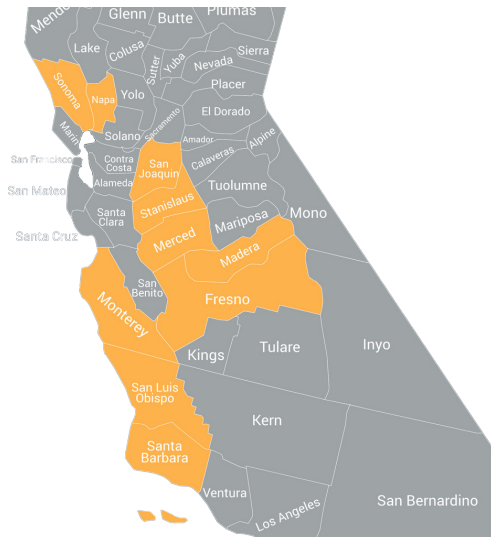
Pollinators can provide significant benefits to CA producers like: increasing pollination efficacy, improving soil health and water retention, providing erosion control, sequestering carbon, and more. Studies show that larger, more connected habitats provide even more ecological benefit. If we can create larger, contiguous habitats, we get more benefits for pollinators and more benefits for producers. Connected and contiguous habitats provide even more ecological benefit. More qualifying points will be awarded to growers with neighboring and/or adjacent applicants.

What are the practices that are covered?

Farmers and ranchers can apply to get paid for the following practices:

Eligible Counties:

Fresno
Madera
Merced
Monterey
Napa
San Luis Obispo
San Joaquin
Santa Barbara
Sonoma
Stanislaus



- **Cover Crops**
- **Conservation Cover**
- **Wildlife Habitat and Range Planting**
- **Hedgerow Planting**
- **Prescribed Grazing**
- **Micro-Irrigation**
- **Integrated Pest Management**
- **Tree-Shrub and Brush Establishment and Management**

Become a Participating Producer in the California Ag-Land Network for Pollinators!

If you are interested in supporting bees and other pollinators, enhancing your operation, and collaborating with fellow farmers, please scan the QR Code and share with your neighbors!



Funded through the Natural Resources Conservation Service (NRCS) Regional Conservation Partnership Program (RCP): Farmer-to-Farmer Collaboration - Increasing Pollinators Across Diverse California Farms and Ranches.

Benefits for Pollinators = Benefits for Farmers and Ranchers

Participating farmers and ranchers will receive technical assistance and reimbursements for new practices. Ideal candidates should be interested in the following:

- Increase in crop pollinators
 - More cost-effective pest control
 - Better ground water retention
 - Improved soil health
 - Enhanced land stewardship
 - Expanded market appeal and global market access
 - Desire to collaborate with fellow farmers and ranchers and promote stewardship with neighbors
 - Getting paid to implement on-farm practices that benefit pollinators
- *Growers are not required to be interested in all practices or benefits to be eligible.



How do I know if I can qualify, and how many practices I can apply for?

All growers and ranchers in the 10 designated California counties can apply. You must be EQIP-eligible, however, the Annual Gross Income restriction has been waived. You must be FSA registered or be able to do so. You may apply for any of the covered conservation practices, including first-year soil prep-practices prior to planting cover crop or habitat. Integrated Pest Management can also be an additional practice and is recommended. Prescribed grazing practices can be stand-alone or combined with range plantings.

What do I need to do to get started? First step is to join the **Pre-Application List** by scanning the QR code below to provide your contact information. We will contact you to give you more details, answer your questions, and send you an application.

Collaborating Partners

The California Ag-Land Network for Pollinators includes the following partners to deliver technical assistance and reimbursement payments to producers.



Become a Participating Producer in the California Ag-Land Network for Pollinators!

If you are interested in supporting bees and other pollinators, enhancing your operation, and collaborating with fellow farmers, please scan the QR Code and share with your neighbors!



Funded through the Natural Resources Conservation Service (NRCS) Regional Conservation Partnership Program (RCPP): Farmer-to-Farmer Collaboration - Increasing Pollinators Across Diverse California Farms and Ranches.

agriculture@pollinator.org • www.pollinator.org • 279-336-4137

ENHANCED FARMLAND FOR POLLINATORS, CROPS, AND SOIL

Your farm is home to critically important pollinators. Join now to build habitat and experience the following benefits – **and get paid to do it!**

- Improved soil fertility and microbial diversity
- Better water retention
- Decreased run-off and soil loss
- Improved pest mitigation
- More cost-effective pest control
- Enhanced stewardship of your land



Receive Financial and Individualized Technical Assistance

Through our partnerships and expertise, each project will be designed so that regionally appropriate species are chosen to support pollinators and soils. A priority will be given to plant species that have high establishment rates, low cost, drought tolerance, low maintenance, and soil health benefits. P2, CAFF, and WFA are excited to offer webinars and onsite trainings, and can offer support in IPM implementation and monitoring. Farmers will be reimbursed for implementation of the following practices:

- Hedgerows
- Conservation cover
- Cover crop
- Field border
- Tree and shrub establishment
- Wildlife habitat planting
- Integrated pest management



Collaborating Partners



Funded through the California Department of Food and Agriculture Pollinator Habitat Program.

Become a Participating Producer!



From Fallowed to Flourishing

The frequent droughts in California have put serious stress on farmers, soil, pollinators and their habitat. We are searching for farmers who want to install pollinator habitat and are interested in improving soil health. A major priority of this work will be focused on helping small or **socially underserved farmers** who are facing particularly difficult challenges. We strongly encourage historically underserved farmers to apply. If you are interested in enhancing your farm and supporting bees and other pollinators, **please scan the QR Code to learn more and apply!**

agriculture@pollinator.org
www.pollinator.org • 279-336-4137

Which Pollinator Partnership **Funding Opportunity** is right for me?

California Ag-Land Network for Pollinators (RCPP)	Enhancing Farmland: Pollinators, Crops, and Soil (PHP)
<ul style="list-style-type: none"> ● Overview: Building continuous pollinator habitat across California farms and ranches, receive technical and financial assistance to benefit your farm and pollinators. ● Counties: <ul style="list-style-type: none"> ○ Fresno, Madera, Merced, Monterey, Napa, San Luis Obispo, San Joaquin, Santa Barbara, Sonoma, Stanislaus ● Funded Practices: <ul style="list-style-type: none"> ○ Cover Crops, Conservation Cover, Wildlife Habitat and Range Planting, Hedgerow Planting, Prescribed Grazing, Micro-Irrigation, Integrated Pest Management, Tree-Shrub and Brush Establishment and Management ● Partners <ul style="list-style-type: none"> ○ Almond Board of California, California Dairies, California Cattlemen’s Association, Wine Institute, Project Apis m., California Sustainable Winegrowers Alliance, California Farm Bureau, Blue Diamond Growers, Bayer, USDA NRCS ● Program Features: <ul style="list-style-type: none"> ○ Option to work with neighbors to create connected habitat, looking specifically for more dairies and ranches ○ Note: FSA records required, AGI waived 	<ul style="list-style-type: none"> ● Overview: funding and technical assistance for farmers interested in installing pollinator habitat and improving soil health with an additional emphasis on pest management and training with WFA and CAFF. ● Counties: <ul style="list-style-type: none"> ○ Butte, Colusa, Glenn, Monterey, Napa, Sacramento, San Benito, Solano, Sonoma, Sutter, Tehama, Yuba ● Funded Practices: <ul style="list-style-type: none"> ○ Hedgerows, Conservation cover, Cover crop, Field border, Tree and shrub establishment, Wildlife habitat planting, Integrated pest management ● Partners <ul style="list-style-type: none"> ○ WFA, CAFF, CDFA ● Program Features: <ul style="list-style-type: none"> ○ Some funding set aside for helping small or socially underserved farmers who are facing particularly difficult challenges. ○ Interest in fallowed land and areas affected by drought to improve soil health and fertility ○ Highlights IPM, pest control and beneficial species

Overall benefits of **both** programs:

- Improved soil microbial diversity and soil fertility and reduced soil loss
- Better water retention & less run-off
- Improved pest mitigation
- More cost-effective pest control
- Enhanced stewardship of your land
- Get paid to implement on-farm practices that benefit pollinators