



Bee Friendly Gardening

A Program of Pollinator Partnership

May 2024



Pollinator Steward Certification (PSC) Sponsors BFG

We want to send a huge thank you out to PSC for supporting the work of BFG with a \$5,000 donation.

Linda Popelka – BFG Member and Certified Pollinator Steward

Wow, All I can say is that the [Pollinator Steward Certification](#) program has rocked my world. I am basically a solitary, native bee personality – totally happy working close to home and avoiding group interaction. Completing the assigned project in my yard has been natural and easy, and it is an ever-expanding process, with more and more native plants being added each spring and fall.

The second project – educational outreach – seemed easy if I could avoid speaking to a group. I reached out to our city parks director about rehabilitating a long-neglected garden at a nearby park. Of course, the idea was instantly approved by the park's director, and that began the task of recruiting and managing volunteers. What was I thinking? This involves groups and speaking to people and telling them what to do and how to do it. Eek! Here comes the nail-biting learning curve. However, I learned that there is something healing about the shared spirit of working together to help create habitat for bugs. I've discovered this in the process of pushing myself far beyond my comfort level.

The Pollinator Steward Certification program empowers people with the scientific know-how to make a real difference for pollinators, people, and the planet. Learn more and sign-up for updates for next year's program by clicking [here](#)!



READ ARTICLE

Bee Friendly Farming – BFG's Sister Program

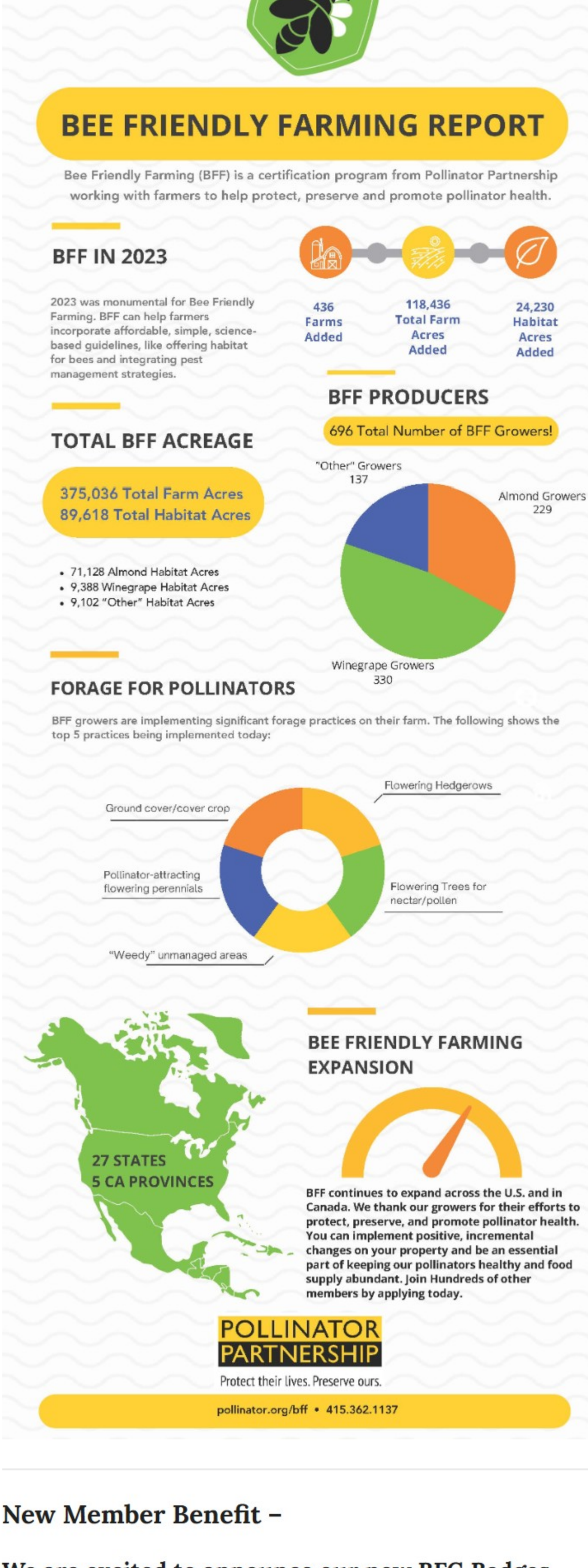
Pante Farms – A Grower Spotlight



Through Bee Friendly Gardening your space can provide support to pollinators and other wildlife. Just as BFG helps people play a bigger role in the health of pollinators and the planet, [Bee Friendly Farming](#) (BFF) unites agricultural producers in this same mission. As a BFG Member, you are connecting to a larger network of [Bee Friendly Farming](#) Certified producers, supporting farmers, and building recognition for the good work they are doing for our pollinators – such as Pante Farms. The Bee Friendly programs help farmers and gardeners incorporate affordable, simple, science-based practices, like offering nutrition and nesting for bees, and implementing integrated pest management strategies.

READ ARTICLE

Check out the impact BFF is having!






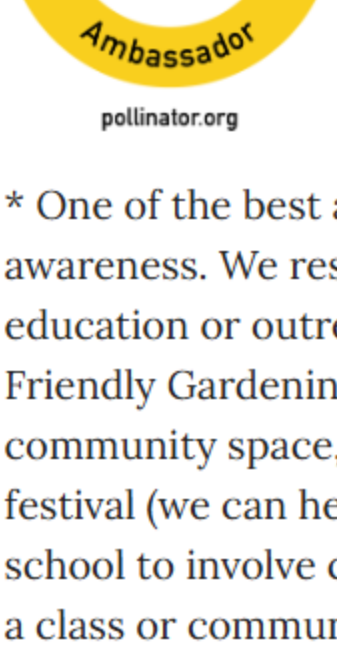
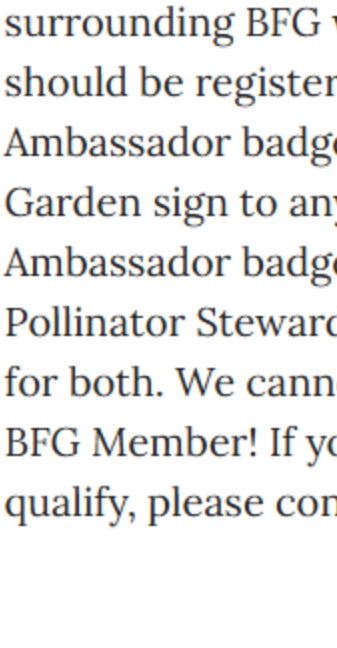
New Member Benefit –

We are excited to announce our new BFG Badges

Join us in doing more for pollinators! With our BFG badge system, you can take further action as a BFG Member and be recognized for your efforts. Earn badges on your Member certificate and proudly display all you are doing to help pollinators.



You can earn up to five badges by taking the following pollinator-related actions:

-  [Register](#) your Bee Friendly Garden
-  [Join iNaturalist](#) and post your first observation
-  Complete the [Pollinator Steward Certification](#)
-  Upload 100 observations of pollinators in your BFG to iNaturalist
-  Become a BFG Ambassador*

* One of the best actions you can take to help pollinators is to spread awareness. We reserve this title for Members of BFG who undertake education or outreach efforts to promote pollinator conservation and Bee Friendly Gardening. Examples include building a Bee Friendly Garden in a community space, hosting a Bee Friendly Gardening table or event at a local festival (we can help supply materials), organizing a planting day at a local school to involve children in creating a Bee Friendly Garden, doing a talk for a class or community group, or creating a social media campaign surrounding BFG with a goal of reaching 1,000 people. Resulting gardens should be registered as a Bee Friendly Garden before applying for the Ambassador badge; for a limited time we are offering a free Bee Friendly Garden sign to anyone who registers a public BFG and applies for the Ambassador badge. We do request that, if you are undergoing your Pollinator Steward Certification, you don't use the same action to qualify for both. We cannot wait to award you this highest level of distinction as a BFG Member! If you have an idea for an action and are not sure if it would qualify, please contact us at [bfg@pollinator.org](#)

APPLY FOR BADGES

Note – new certificates will be issued on a monthly basis. If you have the older version of the BFG certificate, no worries; as you earn badges we will replace it with our new version. Some of our newer Members may still be waiting for their digital welcome packet. It is coming! Normal processing time for new Members is two weeks, and it may take up to four during this transition period to our new certificate/badge system. Thank you for your patience! If you joined BFG more than a month ago and still haven't received your digital welcome packet, please reach out, as it may have been sent to your spam box.



Also, to show our appreciation for you, we are gifting you this Bee Friendly Badge just for being a Member of BFG! We hope that you will proudly display it in your email signature, social media profile pictures, anywhere you choose! Thank you for your support and all you do to help pollinators.

GET THE BADGE

New Pollinator Poster

It's finally here. The 2024 Vision 2040: Thriving Ecosystems, Economies, and Agriculture poster is now available for pre-order!



Created by artist Regina Milan, this poster focuses on our vision for 2040, stating that in the future, we will have a sustainable and equitable world for people and pollinators, with food production, ecosystems, and economies thriving. Dive into this visual journey that encapsulates our aspirations for a sustainable future.

Did you know? As a BFG Member you have access to the Members only store, where you can order pollinator posters at a discounted rate.

Check It Out [https://www.pollinator.org/bfg/store](#)

Notable Dates:

- June – Perennial Garden Month
- June 2-8 National Garden Week
- June 16 – Father's Day
- June 1 – National Prairie Day
- June 20 – Summer Solstice
- June 19-25 – [Pollinator Week](#)

Brought to you by BFG – be a part of the Bee Friendly movement!



[bfg@pollinator.org](#)
415-362-1137

600 Montgomery Street, Suite 440
San Francisco, CA 94111

Copyright © 2024 Pollinator Partnership. All rights reserved.