



Bee Friendly Gardening™ Newsletter

A program of Pollinator Partnership

Dear Sara

May is when gardens truly come alive, with blooms opening, pollinators returning in full force, and the landscape filling in day by day. It's a rewarding time, as the effort you've put in begins to take shape. Keep planting with intention, aim for continuous blooms, and take a moment to notice the bees and other pollinators at work. The choices you make now will carry your garden through the rest of the season.

Happy gardening,



Sara Wittenberg
Bee Friendly Gardening Manager
Pollinator Partnership

How Many Host Plants?

Jody Longhill

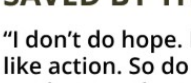


Like many native plant gardeners interested in butterflies, I started out by planting milkweed to attract the monarch butterfly. The more I learned about butterflies, however, the more I realized that I didn't have enough host plants or nectar plants to support them. I bought a butterfly book and began to research what the host plants were for different butterflies. I downloaded a list of Maryland native butterflies from the Maryland Department of Natural Resources. I also found lots of information from the National Wildlife Federation and the famous Mt. Cuba Center. What I learned made me rethink my whole garden!

Want to write an article for the newsletter? Scroll to the bottom to find out more!

[Read the full article](#)

Quarterly Member Webinar



PROTECT THEIR LIVES. PRESERVE OURS.

SAVED BY THE BEES

"I don't do hope. I think it's a waste of energy. I like action. So do what you can do in your garden, cut down on your meat, have willow trees, educate yourself, and question me too. People say, 'Leave a space for nature.' We say, 'No, take space for yourself and leave the rest for nature.'"



MEMBER WEBINAR

Join Paul Handrick and learn more about World Bee Sanctuary at <https://worldbeesanctuary.org/>

Thursday May 28
10PT/12CT/1ET

Must Register to Receive Link

[Register for Webinar](#)

Plant Profile: Red Osier Dogwood (*Cornus sericea*)



<https://frontrange.wildones.org/red-twig-dogwoods/>

[Read the full article](#)

BFG All-Star: Jenna Smalley



Jenna is the second ever BFG member to earn All-Star status! What does that mean? She has earned all five BFG badges. You can too! Check out the [badges](#) you can earn, along with the [Ambassador toolkit](#) we created to help you earn the most prestigious BFG badge of all!

Additional Webinar Opportunity

From Forests to Meadows: Supporting Pollinators Across Your Land



Thurs, May 21 at 1pm
Landowner webinar

The Woodland Stewards Collaborative

Join Pollinator Partnership's Lacey Smith, alongside the Xerces Society and the New York Forest Owners Association, for an informative program exploring how landowners can support declining pollinator species across their properties, from the forest interior to the open meadow. Whether you manage woodlands, fields, or both, you'll come away with practical strategies and a new understanding of how your land fits into the larger ecological picture.

[Register for Webinar](#)

Habitat Hero Plant Kit Awards

Accepting applications starting May 1st

Starting May 1st, the [NAPCC Pollinator Habitat Installations Task Force](#) will seek applications from community-based organizations, schools, or institutions that are interested in receiving FREE native plant material provided by My Home Park.

Award recipients will receive:

Up to 3 Habitat Hero Plant Kits

One year complimentary membership to Bee Friendly Gardening

One complimentary registration to the Pollinator Steward Certification Program

Eligibility is restricted to community-focused organization, school, or institutions located in the Great Plains, Midwest, or Northeast regions.

Applications close June 30th.



[Apply](#)

Project SkyBridge

Let's Help Build a Park in the Sky - Put Your Garden on the Map!

Your garden is more than just a hobby—it's a vital link in a global lifeline. We are building a Park in the Sky, a massive network of habitat stepping stones designed to protect our pollinators and other migratory species. Whether you have a sprawling yard or a single flower-filled balcony, your patch of green is the missing piece of the puzzle.

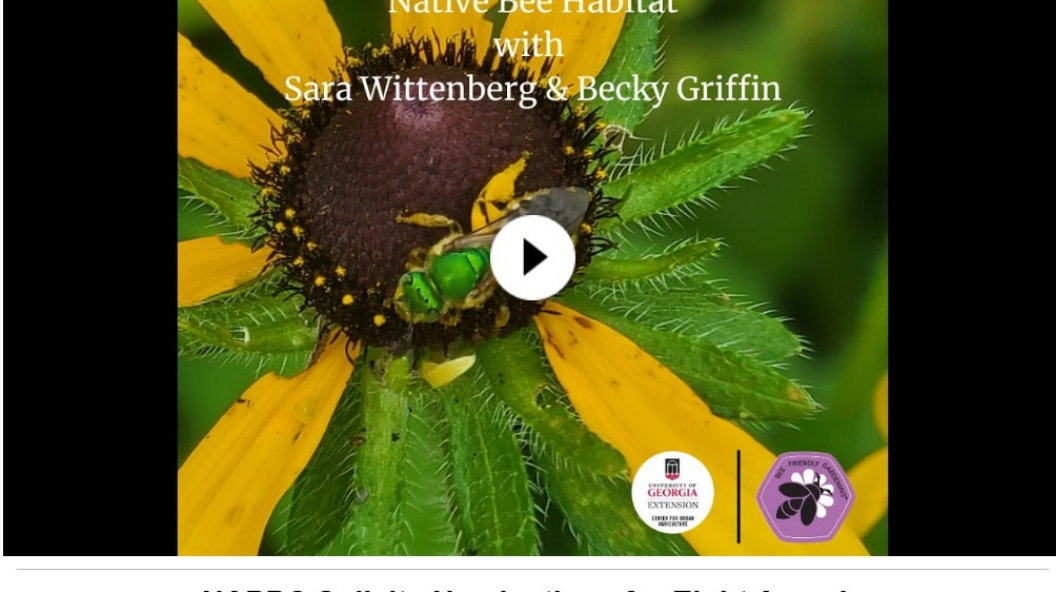
By signing on, your garden will be officially placed on our global habitat map, showing the world exactly where the bees find sanctuary. It's free, simple, and creates a real-world impact.

Let's reach 500 Bee Friendly Gardens. Register. Protect. Connect. Inspire. Claim your spot on the map today!



[Register - English](#)

[Register - Spanish](#)



NAPCC Solicits Nominations for Eight Awards



The North American Pollinator Protection Campaign (NAPCC) is seeking nominations for eight prestigious awards. The awards will be presented at the annual NAPCC Conference taking place virtually in October, 2026.

[Pollinator Advocate Award](#) (CA, US, MX)

[Farmer-Rancher Pollinator Conservation Award](#) (CA, US, MX)

[Pollinator Roadside Management Award](#)

[Pollinator Electric Power Award](#)

Nominate yourself or others by July 17, 2026 at midnight EST. Contact napcc@pollinator.org with any questions.

Don't Lose Your BFG Membership - Deadline Fast Approaching!



Now that we are using a different Customer Relations Management (CRM) software, what does that mean for BFG members? First, let's define each platform: Bloomerang is a donor management software that helps organizations like Pollinator Partnership keep track of donations and sponsorships. Bloomerang Fundraising (formerly QGiv) is Bloomerang's payment processor that allows us to receive online donations.

#1 If you use PayPal for your recurring annual Bee Friendly Gardening Membership payment, we encourage you to discontinue that payment and instead update your payment method to Bloomerang Fundraising. In Bloomerang Fundraising, you have the ability to choose the start date of your payment. Once you have made the switch, don't forget to cancel your recurring donation in PayPal.

#2 With Bloomerang Fundraising, donors can easily create and access their donor portal. This portal allows you to view your giving history, update payment information, and access tax receipts.

We need all of our supporters to switch your recurring donations over to Bloomerang Fundraising by July 1, 2026. Thank you for your incredible support. Your donations make a real impact for pollinators and their habitat!

[Switch to Bloomerang Fundraising](#)

Notable Dates

- May 2 - National Start Seeing Monarchs Day
- May 8 - National Public Gardens Day
- May 10 - World Migratory Bird Day
- May 15 - Endangered Species Day
- May 16 - National Love a Tree Day
- May 19 - World Plant a Vegetable Garden Day
- May 20 - World Bee Day
- May 20 - Reduce Your Lawn Day
- June - Perennial Garden Month
- June 5 - World Environment Day
- June 6 - National Prairie Day
- June 7-13 National Garden Week
- June 17 - World Day to Combat Desertification and Drought
- June 21 - Summer Solstice
- June 22-28 - [Pollinator Week](#)

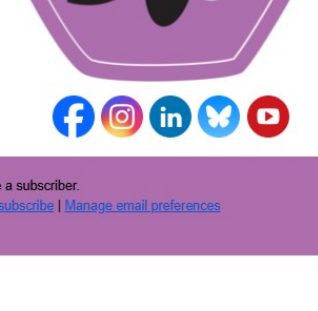
Interested in writing an article for BFG?

We're always looking for content for our recurring columns "My Favorite Native Plant/Pollinator" [Tell us about your favorite native plant, why you love it, and what pollinators love it.] and "How Many Host Plants?" [Highlight what host plants you have included in your garden, as well as the pollinators that they support.]. We would love to feature you in an upcoming BFG newsletter! Simply email your response, along with a photo if possible, to bfg@pollinator.org.

Bee Friendly Gardening is for Every Landscape!

Be a part of the Bee Friendly movement.

Our Contact Information
Pollinator Partnership
582 Market Street, Suite 1215
San Francisco, CA 94104
415.362.1137
<http://pollinator.org>



You are being sent this email because you are a subscriber.
If you wish to update your Email Preferences or Unsubscribe, click [Unsubscribe](#) | [Manage email preferences](#)

[Message clipped] [View entire message](#)

👤 Reply ➡ Forward 😊 🗉 Share in chat 📧