

**What is a host plant and why are they important?**

Most butterfly and moth young eat only one or just a few species of plants. The plant species where the females lay their eggs and that the larvae eat are called host plants. By planting host plants in our gardens, we can turn our yards in to havens for pollinating butterflies and moths.

Buckwheat (*Eriogonum spp.*)



Jason Hollinger

Various oaks (*Quercus spp.*)



CalScape

Mormon Meadowlark larvae



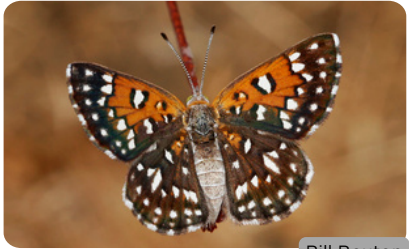
Nicky Davis

Mournful Duskywing Larvae



Timothy Boomer

Adult Mormon Meadowlark



Bill Bouton

Adult Mournful Duskywing



Joey Bom

**POLLINATOR PARTNERSHIP**



Protect their lives. Preserve ours.



Learn more at [pollinator.org/nappc/lepidoptera/](http://pollinator.org/nappc/lepidoptera/)

# Host plant guide for supporting pollinating moths and butterflies

# N. California

**Dudleya spp.**



Joseph Dougherty

**California False Indigo**



Keir Morse

**Oaks (*Quercus spp.*), especially canyon live oak (*Quercus chrysolepis*)**



Ken-ichi Ueda

**Sonoran Blue Larvae**



Todd Stout

**California Dogface Larvae**



Krissa Klein

**California Sister Larvae**



Ken-ichi Ueda

**Adult Sonoran Blue**



John Lane

**Adult California Dogface**



Dan Fitzgerald

**Adult California Sister**



Donna Pomeroy

**POLLINATOR PARTNERSHIP**



Protect their lives. Preserve ours.

*Your garden can make a big difference in the fight against pollinator decline!*