

**Bee Friendly Gardening Newsletter**

1 message  
 Sara Wittenberg <PollinatorPartnership@mailman.bloomerang-mail.com>  
 Reply-To: bfg@pollinator.org  
 To: "Sara Wittenberg" <sw@pollinator.org>

Tue, Nov 25, 2025 at 9:03 AM



**Bee Friendly Gardening™  
 Newsletter**

Dear Sara

November has settled in, wrapping our gardens in diffuse light and gentle stillness. As the last blooms fade and the landscape softens, take a moment to pause and appreciate all the small wonders our gardens have given us this year—every visiting bee, fluttering butterfly, and seedling that pushed its way toward the sun. This season of thankfulness reminds us how connected we are to the rhythms of nature, and how even simple choices in our gardens can support the pollinators we rely on.

Happy gardening,



Sara Wittenberg  
 Bee Friendly Gardening Manager  
 Pollinator Partnership

**Where do pollinators go in the winter?**

Anthony Colangelo, Education Manager, Pollinator Partnership

As the summer season ends and the cooler weather approaches, once magnificent and colorful flowers begin to wither and wilt, while previously buzzing gardens become stems of silence. But where do the pollinators go? Pollinators, such as bees, butterflies, and birds all display a variety of amazing and unique strategies in order to survive the cold weather and overcome the harsh climate of the approaching winter.

*This is part one of a three part series. Check back in December to see where bumble bees go in the winter!*



[Read the full article](#)

**Golden Bloom Award**

**Rebecca Cannaday is the first BFG member to earn all 5 badges - congratulations Rebecca!**



I actually grew up quite afraid of bees and wasps. All that changed when I was in my late 20's and I learned about the peril of bees. My first pollinator gardens were full of nectar plants, but I had yet to learn about natives. I began joining webinars, talks, and reading books about how to help pollinators and learned about native plants. This led me to transition my garden to natives. Then we moved and I had to start again. We have just over an acre of land, much of it wooded. There are a lot of invasive plants, like alanthus trees, wildberry, and honeysuckle...it's been a fight to remove them! I also have a section of lawn that I am replacing with native plants. I have continued to learn during this journey, which is what led me to Bee Friendly Gardening. I wanted to join a community where I could learn from others and learn how to share my bee knowledge with others. I decided to pursue the badges, because I am always looking to learn. I was already an iNaturalist user, so those badges were easy. I then saw that we could become Bee Friendly Ambassadors. I am always looking for ways to encourage others to plant at least a few plants for the pollinators and I was lucky enough to be invited to share my knowledge with a group of children in my school division. I wanted to also become a Pollinator Steward to learn more about sharing with others and growing my impact in my own yard. Oh, and as to wasps, I now love them after reading Heather Holm's book about wasps. I even let some friendly paper wasps nest on my porch last summer!

The picture of me is with my natural wildflower hill with my new signs that I put up this year. I also added in a few small ponds and some more native plants on the hill.

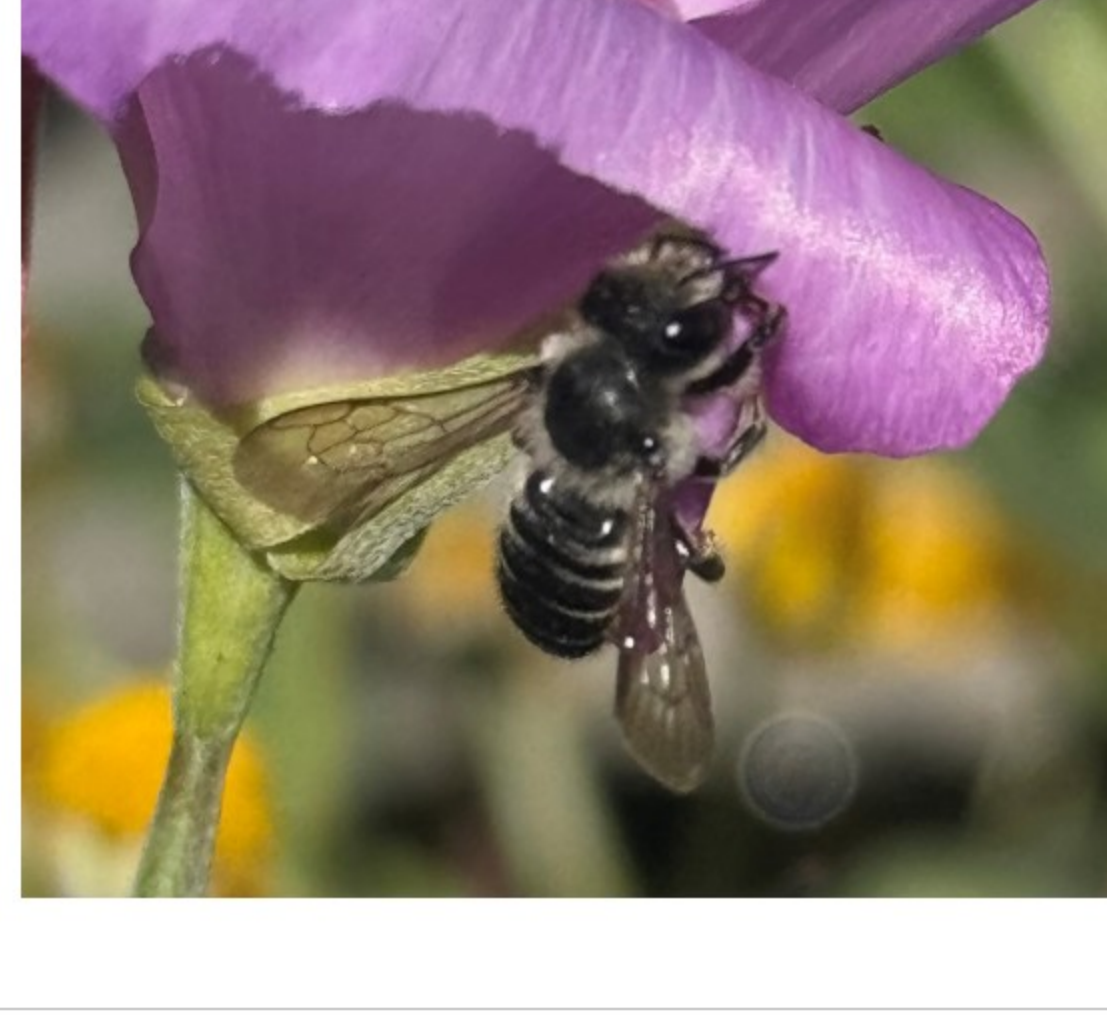
I encourage everyone to learn as much as they can and share that knowledge. The Bee Friendly Gardening program is a great way to start. iNaturalist is a wonderful resource for learning who is visiting your garden. The Pollinator Stewardship program provides you with not only information about pollinators and gardening for them, but how to share this knowledge with others.

[Apply for Badges](#)

**My Favorite Native**

Nicki Brockamp, Delta Naturalists Society and BFG Member

This was my second summer growing *Clarkia amoena* (aka Farewell-to-spring) in my Delta, British Columbia garden. Not only is this a beautiful plant that blooms from spring to fall and readily self-seeds but it's also appreciated by leafcutter bees which cut out circular pieces of the petals to construct their nest with. It's a beautiful sight to see the pink petals floating away via the bee transporters. Attached is a photo of a *Megachile* spp in action on one of the petals.



**Quarterly Member Webinar**

**POLLINATOR PARTNERSHIP**  
 CLIMATE CHANGE AND THE GARDEN: POSITIVE ACTION IN A TIME OF CRISIS

Lorraine Johnson is the author of numerous books on native plant gardening and creating habitat for pollinators. Her most recent book is *A Northern Gardener's Guide to Native Plants and Pollinators*, co-authored with Sheila Colla and with a Foreword by Douglas Tallamy.

Monday December 1  
 4PST/8CST/7EST  
 Must Register to Receive Link

[Register for Webinar](#)

**Imperiled Bombus Task Force**

The Imperiled Bombus Task Force is one of 10 task forces associated with the North American Pollinator Protection Campaign (NAPPC). This task force brings together experts that work to identify and address key stressors to bumble bee health, determine critical research needs, and promote scientifically sound conservation of bumble bees. They recently published a white paper on developing a commercial bumble bee clean stock certification program, which describes the need to mitigate disease risk in commercial bumble bee production, reviews what is known about pathogens, parasites, and other symbionts, and provides recommendations for best practices in detecting, quantifying, and controlling these risks to protect both managed and wild populations. To raise public awareness, the task force developed a pamphlet on bumble bees and climate change that explains how shifting temperatures, altered flowering times, and extreme weather events are impacting bumble bee populations, and what people can do to help. In addition, the task force administers a small grants program, providing funding to community organizations and researchers whose projects directly contribute to bumble bee conservation on the ground. Find all this and more on the [Imperiled Bombus Task Force webpage](#).

**2026 Pollinator Steward Certification**

We are excited to announce that early bird registration is now open for our 2026 Pollinator Steward Certification (PSC) training! Register today to reserve your spot in this educational program offered only by Pollinator Partnership. PSC empowers people with the scientific know-how to make a positive difference for pollinators, people, and the planet.

Topics include an introduction to the world of pollinators, how they live and thrive, threats to pollinators, and how we all can help. Details will be provided on habitat creation for pollinators in many landscapes including home gardens, parks, rights-of-way, and agricultural landscapes. Additional information on pollinator identification and how to share your knowledge through community outreach will be provided.

This course is ideal for home gardeners, land managers (large and small), farmers, organizations, government departments, and anyone who wants to do more to support pollinators. Join our growing community of Certified Pollinator Stewards!

[Register for PSC](#)

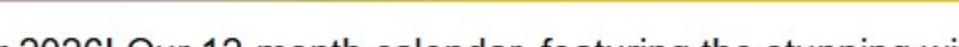
**2026 Pollinator Partnership Calendar**

Get ready for 2026! Our 12-month calendar, featuring the stunning winning pollinator photos from our community-driven contest, is now available for pre-sale. Each month showcases a breathtaking image submitted by a talented photographer, making this a truly unique piece for your wall or a perfect gift. Best of all, I'm happy to share that four photos submitted by BFG members are featured in this design!

Show your support for your fellow BFG members and order yours today at the special pre-sale price of \$25 (that's \$5 off the regular price)! Best of all, pre-sale calendars will ship before the end of the year, guaranteeing you'll have it in hand before the new year even begins.

All funds raised from this fundraiser will help support Pollinator Partnership's mission to promote the education of pollinators, critical to food and ecosystems, through conservation, health, and research.

[Pre-Order](#)



Cassie Franklin sporting a BFG hat and shirt. Get your own!

[BFG Merch](#)

**Giving Tuesday**

From the flutter of a butterfly's wing to the steady buzz of a bee, the smallest pollinators make our world bloom. Their work sustains the food we eat, the flowers we cherish, and the ecosystems we all rely on. As a Bee Friendly Gardening member, you're already a vital part of this effort. Your commitment to creating habitat and spreading awareness is the heart of this program, and we're deeply grateful for everything you do.

This Giving Tuesday, we're reaching out with a gentle invitation—only if you're able and interested—to help us do even more for pollinators at a moment when support matters most. National conservation funding continues to shift, and the need for strong, community-driven action has never been greater. If you choose to make an extra gift this season, your impact will be extraordinary. Thanks to a generous \$5,000 Giving Tuesday match from the NorthStar Sustainability Fund, every dollar you give will be doubled to support on-the-ground habitat restoration, critical research, and education that empowers gardeners everywhere.

Every contribution, of any size, truly makes a difference. And with this match, even the smallest gift becomes twice as powerful. Because when each of us does a little, together we create lasting impact—for pollinators, for people, and for the planet. Thank you for being such an important part of the Bee Friendly Gardening community. We appreciate you more than you know.

[Give Now - Bee Mighty](#)

**Notable Dates**

- December 5 - World Soil Day
- December 21 - Winter Solstice

**Interested in writing an article for BFG?**

We're always looking for content for our recurring columns "My Favorite Native" [Tell us about your favorite native plant, why you love it, and what pollinators love it.] and "How Many Host Plants?" [Highlight what host plants you have included in your garden, as well as the pollinators that they support!]. We would love to feature you in an upcoming BFG newsletter! Simply email your response, along with a photo if possible, to [bfg@pollinator.org](mailto:bfg@pollinator.org).

**Bloomerang: What You Need to Know**



Now that we are using a different Customer Relations Management (CRM) software, what does that mean for BFG members? First, let's define each platform: Bloomerang is a donor management software that helps organizations like Pollinator Partnership keep track of donations and sponsorships. *Bloomerang Fundraising* (formerly QGiv) is Bloomerang's payment processor that allows us to receive online donations.

**#1** If you use PayPal for your recurring annual Bee Friendly Gardening Membership payment, we encourage you to discontinue that payment and instead update your payment method to Bloomerang Fundraising. In Bloomerang Fundraising, you have the ability to choose the start date of your payment. Once you have made the switch, don't forget to cancel your recurring donation in PayPal.

**#2** With Bloomerang Fundraising, donors can easily create and access their donor portal. This portal allows you to view your giving history, update payment information, and access tax receipts.

We encourage all of our supporters to browse our new giving platform and consider switching your recurring donations over to Bloomerang Fundraising. Thank you for your incredible support. Your donations make a real impact for pollinators and their habitat!

[Switch to Bloomerang Fundraising](#)

**Bee Friendly Gardening is for Every Landscape!  
 Be a part of the Bee Friendly movement.**

**Our Contact Information**  
 Pollinator Partnership  
 582 Market Street, Suite 1215  
 San Francisco, CA 94104  
 415.362.1137  
<http://pollinator.org>



You are being sent this email because you are a subscriber.  
 If you wish to update your Email Preferences or Unsubscribe, click [unsubscribe](#) | [Manage email preferences](#)