

[View this email in your browser](#)



Bee Friendly Gardening™

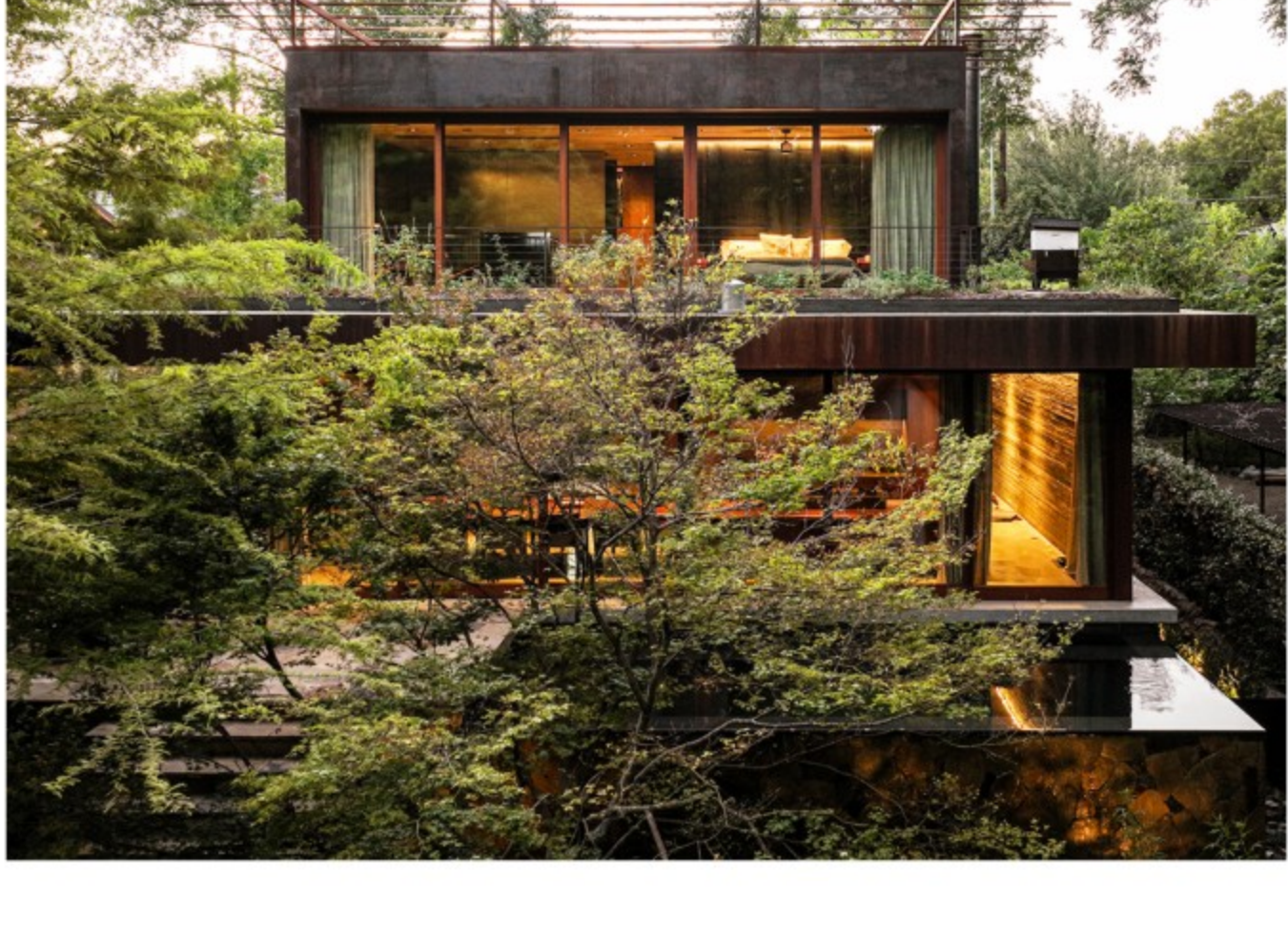
A Program of Pollinator Partnership

October 2023

Casa Campo: A Blurring Between Nature & Architecture

Belinda & Paul Field, Homeowners & BFG Members

We are all individually surrounded by outwardly expanding circles of support that we can provide for nature. These circles of support start at home and extend outwards to the furthest reach of global missions. The Pollinator Partnership illustrates this with their Bee Friendly Gardening program.



Casa Campo by Robert Tsai

In 2020, my husband and I started with the circle closest to us. Having outgrown our small cottage in East Dallas, we decided to replace it with a modern home. Our property drops 12-14 ft in the back to a creek, is heavily wooded, and supports an unusual amount of wildlife and pollinators for an urban setting. We had nurtured the landscape since 2003, trying as much as possible to respect our ecosystem.

Our new home provided an interesting challenge: elevate our support of nature while also minimizing the structure's impact on its surroundings. Our solution – infuse nature directly into the program. Fortunately, we had several of the skill sets needed to materialize our vision. My husband, Paul, is an architect and builder and I am a gardener, hobbyist beekeeper and nature enthusiast. We also used various educational resources to help materialize our vision.

[READ ARTICLE](#)

The Diana Project: Can you help Arkansas's threatened state butterfly?

Shawn Hunter, Co-Founder The Diana Project, NWA Master Naturalist & Ozark Wild One

Known affectionately as “The Diana”, Arkansas’s State Butterfly is the Diana Fritillary (*Argynnis diana*). Once considered common in the central and eastern United States and described as “the most magnificent and splendid species of the genus”, the Diana has seen a steady decline in range and population since the 1900s and is now considered a species of conservation concern by the US Forest Service. As of 2011, the Arkansas range included only the Ozark Plateau, the Ouachita Mountains and several counties in the Delta and Coastal Plain. There is also indication they may be more widespread than assumed, but sightings data are lacking.



“The fritillary butterflies and their larval food plants, violets (*Viola*), are among the most sensitive organisms in native ecosystems, and are among the first to be exterminated as a result of widespread human disturbance”.

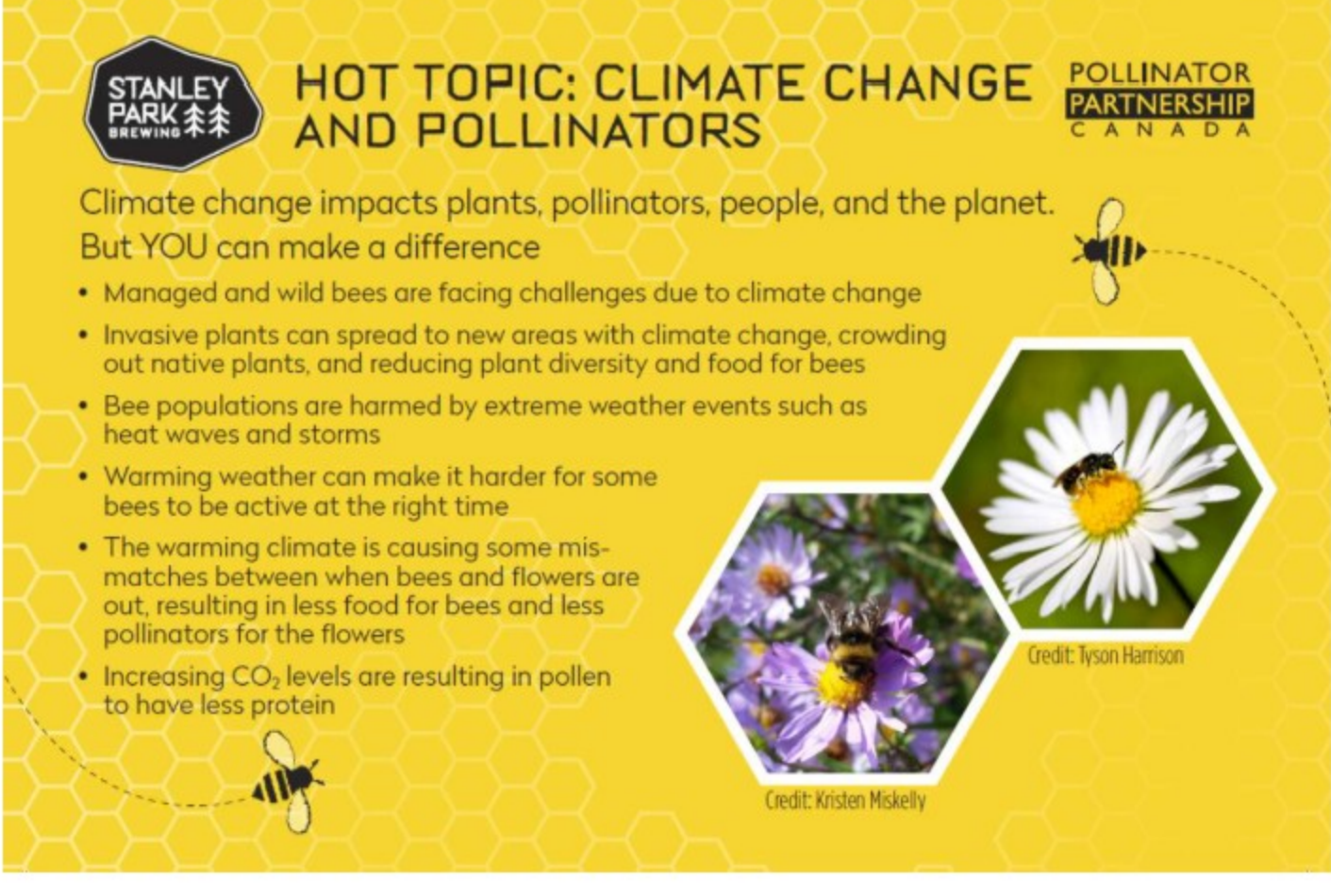
A recent study indicated The Diana’s habitat could decrease by 90% by 2050. Multiple studies infer various causes of decline, including loss of habitat, urbanization, pesticide and herbicide use, strip mining, fragmented range and forest fire suppression.

[READ ARTICLE](#)

Climate Change and Pollinators

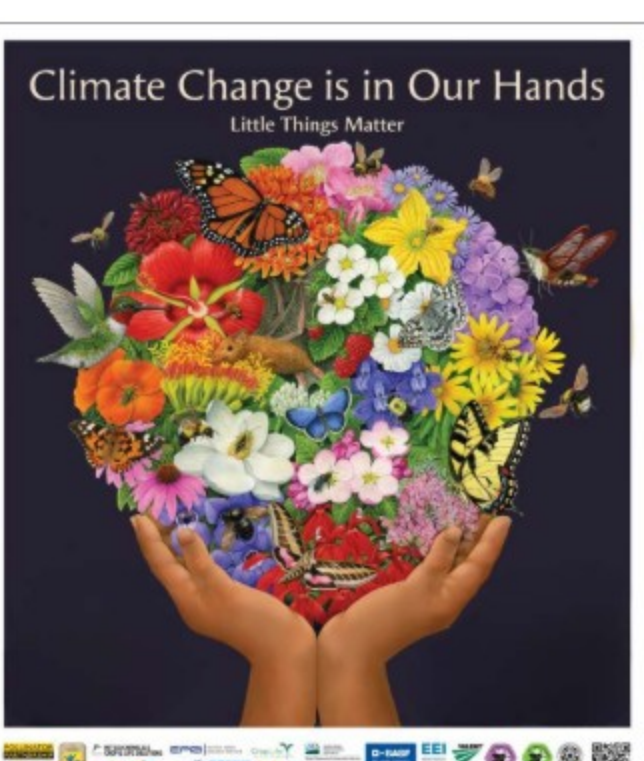
Climate change impacts plants, pollinators, people, and the planet. But YOU can make a difference! Check out these resources to help you spread the word and make a positive impact.

Download our [Climate Change and Pollinators Postcard](#) and share with your friends!



Download our [Climate Change and Pollinators flier](#) to learn more about how climate change impacts pollinators and the little things we can all do each day to support them.

And if you haven't already, be sure to take a look at this year's [pollinator poster](#) titled “Climate Change is In Our Hands” and read more about the artist or purchase one to display. Did you know that as a BFG Member you have access to [past pollinator posters](#) at a discounted price? Just one of the perks you receive for being a Member of our program!



Bee Friendly Garden Spotlight



Thank you to Gina of Brewster, New York for sharing a photo of her Bee Friendly Garden (and sign)! We would love to see pictures of your garden. Email them to bfg@pollinator.org. And don't forget to [join us on iNaturalist](#) and submit your garden observations!

Bee Friendly Gardening Program Update



We are pleased to announce an exciting change in how Bee Friendly Gardening is structured, and we wanted our current Members to be the first to know! We are opening BFG up to anyone who wants to join us in our efforts to expand pollinator habitat in their own spaces – those who have already done the important work, and those who want to learn about sure where to start. Membership is open to all who want to learn about creating pollinator habitat and be part of our supportive and inspiring community. Our hope is that this new program structure will help BFG grow and benefit Members and pollinators alike. While anyone can become a Member, only those who build a BFG and register their garden will be eligible for a [BFG yard sign](#) and the [BFG iNaturalist Project](#). We hope that you, our flagship [ward sign](#), will continue to inspire new Members via your [submissions for our newsletter](#) and interactions on the [BFG Facebook page](#). Thank you for your continued support and contributions!

Notable Dates:

October – National Leave the Leaves month

October 24-31 – Bat Week

October 28 – National Make a Difference Day

October 31 – Halloween

November 13 – World Kindness Day

November 28 – Giving Tuesday (Want to [give more](#) to support BFG?)

Brought to you by BFG - be a part of the Bee Friendly movement!



bfg@pollinator.org
415-362-1137
600 Montgomery Street, Suite 440
San Francisco, CA 94111

Copyright © 2023 Pollinator Partnership. All rights reserved.