

Pollinator Steward Certification



A PROGRAM OF
POLLINATOR PARTNERSHIP

Module 5a: Habitat Creation Yards, Gardens, and Balconies

Tuesday, March 5th, 2024

Anthony Colangelo
Pollinator Partnership

Sara Wittenberg
Pollinator Partnership

www.pollinator.org
stewards@pollinator.org

**POLLINATOR
PARTNERSHIP**

Protect their lives. Preserve ours.

Land Acknowledgment

The land where I live and work is in Sò mba k'è, Denendeh (Yellowknife, Northwest Territories, Canada) located in Chief Drygeese territory, traditional land of the Yellowknives Dene First Nation.



Housekeeping:

- Recordings will be shared and be available until December 31st, 2024
- Closed captioning is available – enable in your controls.
- Please put questions in the Q&A box; UPVOTE questions you like!
- Questions for panelists will be answered at the end of the session.
- Contact stewards@pollinator.org for registration issues, questions, etc.
- Engage in respect and kindness with each other in the chat.
- We suggest that you write down in point form or 1-2 sentences the key takeaways from each training while you are attending live.



Course Information Page:

The Course Information page will be your homebase for module recordings, updates, and program resources. Login to the Course Information page using the following username and password:

website: <https://www.pollinator.org/psc/course-info>

username: PollinatorSteward

password: psc2024

Please do not share the username and password as this page is only for registered participants of the 2024 Pollinator Steward Certification program.



**POLLINATOR
PARTNERSHIP**

Tonight's Speakers!



Anthony Colangelo
Outreach and Education Specialist
Pollinator Partnership



Sara Wittenberg
Bee Friendly Gardening Coordinator
Pollinator Partnership

Gardening at Home



Thriving Balcony Gardens



**POLLINATOR
PARTNERSHIP**



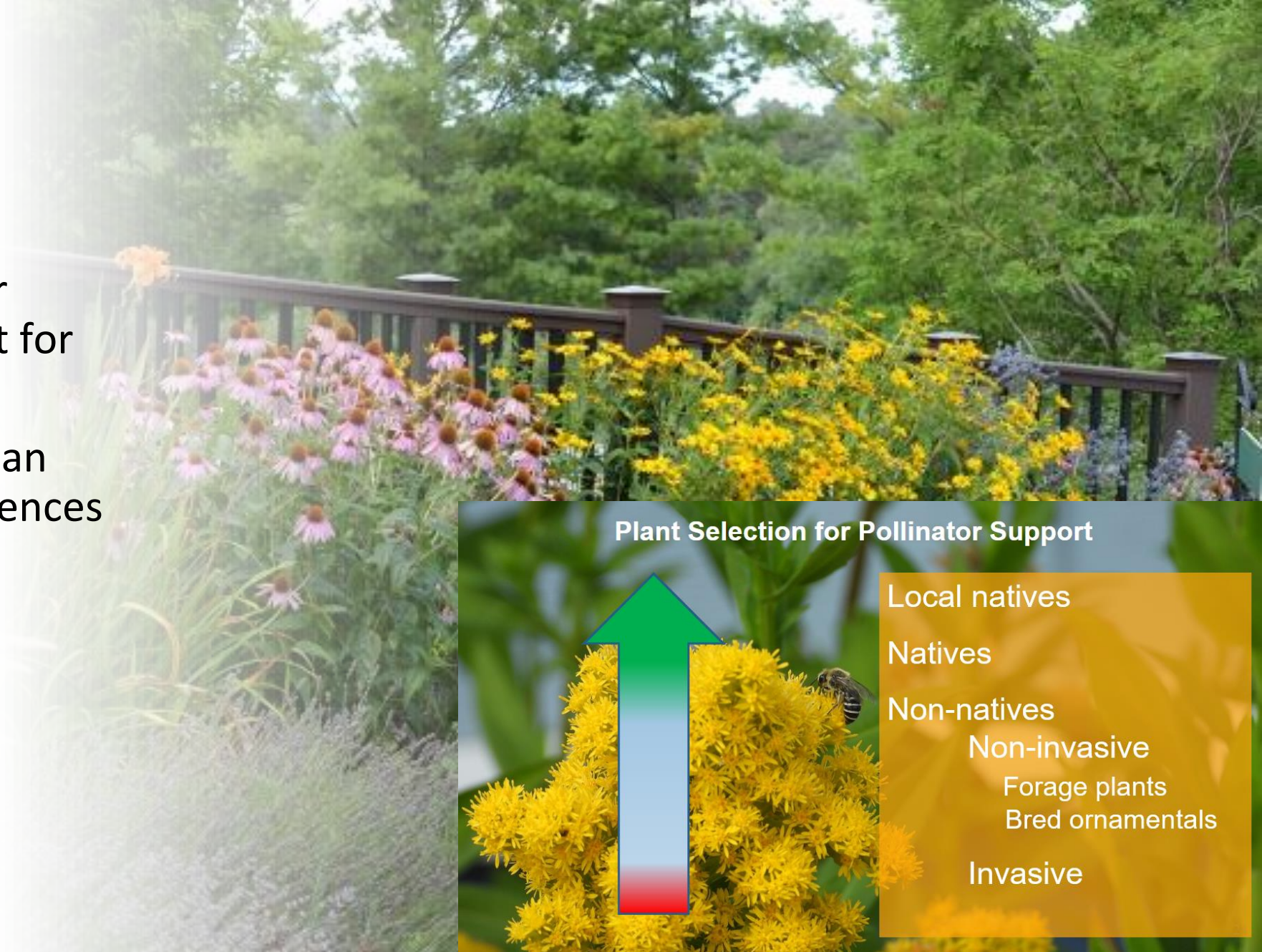
- What/who are you starting with?
- Who would you like to control?
- Who would you like to thrive?
- What additions do you need?
- Organize your timeline with the seasons



**POLLINATOR
PARTNERSHIP**

Project Timeline

- Understanding pollinator lifecycles so we can plant for them
- Know your plants, and plan according to their preferences
 - Annual
 - Perennial
 - Ornamental
 - Native



Resources and Funding

- Tools
- Soil and amendments
- Signage
- Plants
 - Seeds, plugs, pots, trimmings, root remnants, and rescues
 - State or Provincial native plant societies
 - Libraries
 - Garden clubs



Evolution of Seeds



Resources and Funding

- Tools
- Soil and amendments
- Signage

- Plants
 - Seeds, plugs, pots, trimmings, root remnants, and rescues
 - State or Provincial native plant societies
 - Libraries
 - Garden clubs



Pesticide, Herbicides, and Fungicides

- Pesticides can have lethal or sublethal effects
- Herbicides can reduce forage
- Fungicides are often part of seed coatings, and more research needs to be done on the impacts

- Alternatives include **Beneficial insects**
 - Larvae of hoverflies, lady beetles, dragonflies, wasps



Wrap Up:

- **Wednesday, March 6th**, we will focus on habitat creation on a large scale for those who manage rights-of-way, parks, roadsides, and municipalities.
- **Thursday, March 7th**, we will complete our habitat modules with a focus on supporting pollinators in agricultural landscapes.

For certification, attendance (or later viewing) of ONE of the three habitat sessions this week is required

