

Pollinator Steward Certification



A PROGRAM OF
POLLINATOR PARTNERSHIP

Module 7: Expand Your Impact!

Tuesday, April 16th, 2024

Anthony Colangelo
Pollinator Partnership

Maddie Dong
Pollinator Partnership

www.pollinator.org
stewards@pollinator.org

**POLLINATOR
PARTNERSHIP**

Protect their lives. Preserve ours.

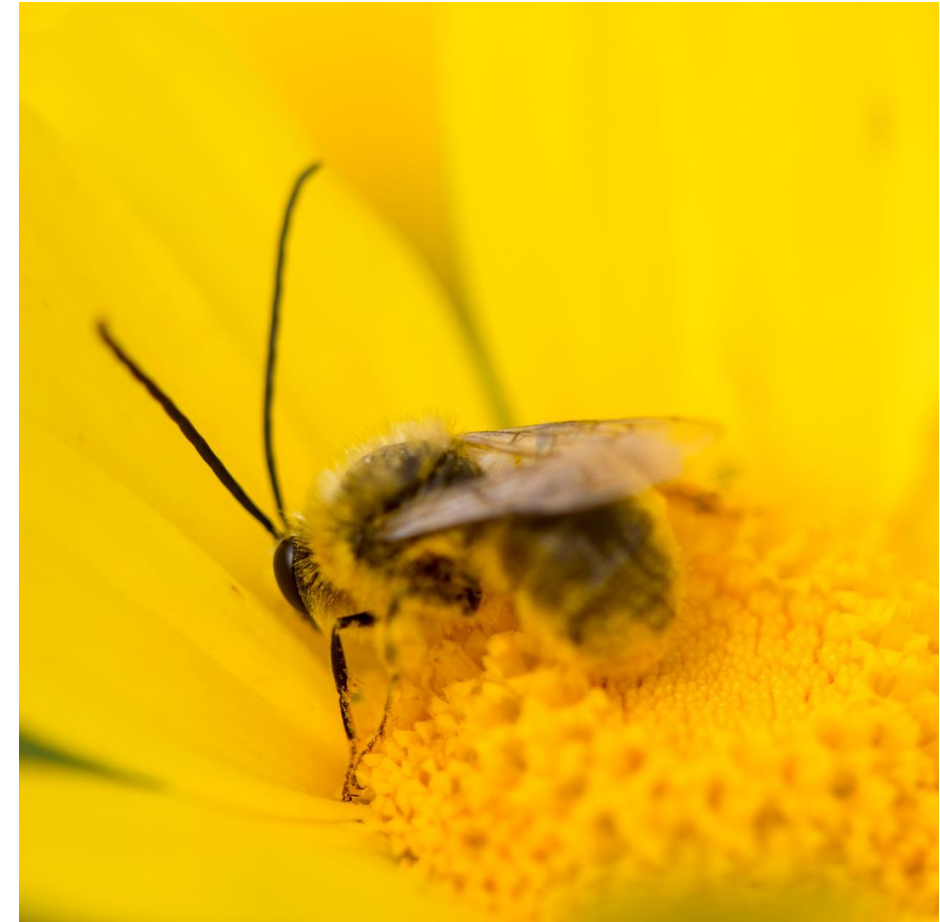
Land Acknowledgment

The land where I live and work is in Sò mba k'è, Denendeh (Yellowknife, Northwest Territories, Canada) located in Chief Drygeese territory, traditional land of the Yellowknives Dene First Nation.



Housekeeping:

- Recordings will be shared and be available until December 31st, 2024
- Closed captioning is available – enable in your controls.
- Please put questions in the Q&A box; UPVOTE questions you like!
- Questions for panelists will be answered at the end of the session.
- Contact stewards@pollinator.org for registration issues, questions, etc.
- Engage in respect and kindness with each other in the chat.
- We suggest that you write down in point form or 1-2 sentences the key takeaways from each training while you are attending live.



Course Information Page:

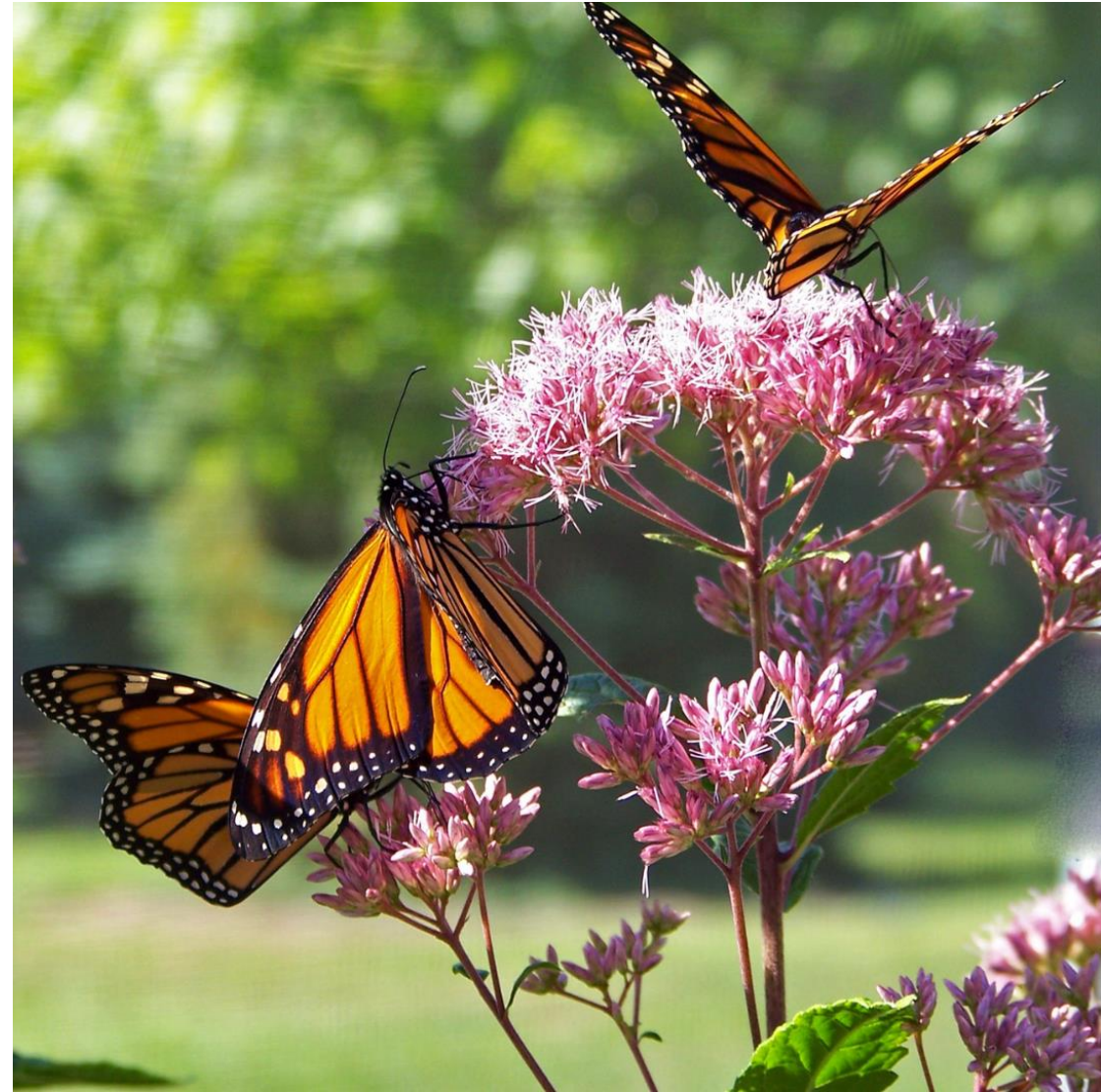
The Course Information page will be your homebase for module recordings, updates, and program resources. Login to the Course Information page using the following username and password:

website: <https://www.pollinator.org/psc/course-info>

username: PollinatorSteward

password: psc2024

Please do not share the username and password as this page is only for registered participants of the 2024 Pollinator Steward Certification program.



**POLLINATOR
PARTNERSHIP**

Tonight's Speakers!



Anthony Colangelo
Outreach and Education Specialist
Pollinator Partnership



Maddie Dong
Program Associate
Pollinator Partnership

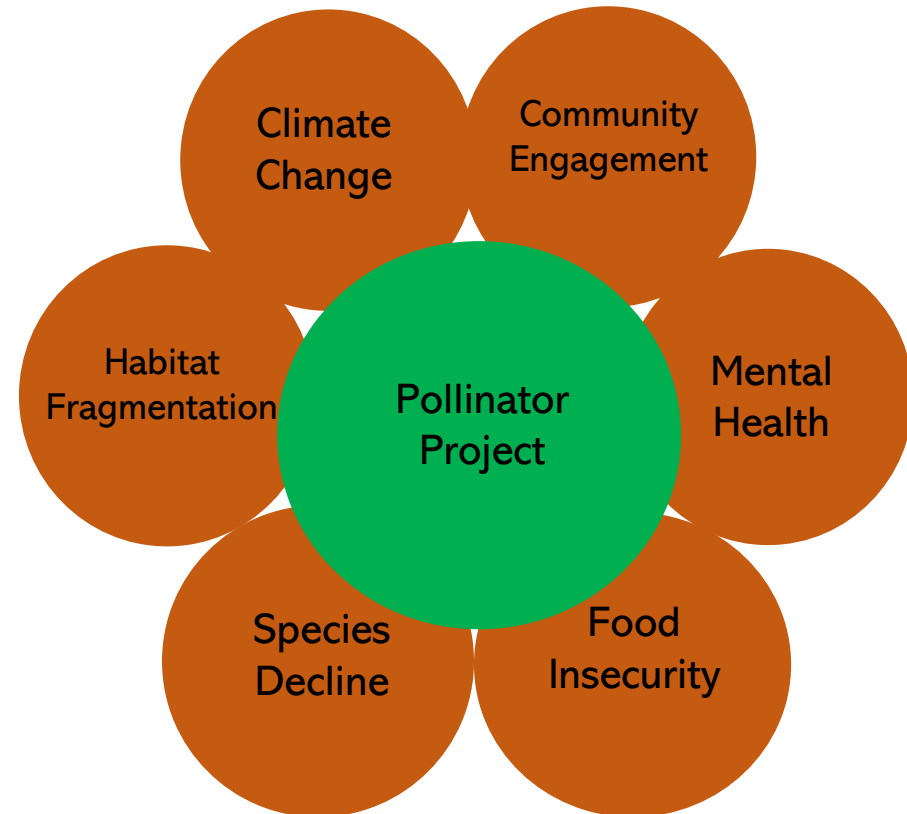
Three Tips to Educate and Engage

1. What's Your Hook?
2. Signs, Signs, Signs!
3. Patience and Persistence



What's Your Hook?

- What made you interested in helping pollinators?
- What is the shortest way to communicate your idea effectively?
- Share your goals with your community!



Take time to discover the bees, hummingbirds, bats, butterflies, moths, and others on this poster at www.pollinator.org. BeeSmart™ tools are available to help you S.H.A.R.E.* your own pollinator discoveries.

DECOUVERTE
DES POLLINISATEURS PARTOUT

Prenez le temps de découvrir les abeilles, colibris, chauves-souris, papillons, papillons de nuit, et d'autres sur cette affiche sur ce site www.pollinator.org. Les outils BeeSmart™ sont disponibles pour vous aider à partager vos découvertes de pollinisateurs avec le programme S.H.A.R.E.*

LA MOTIVACIÓN DEL
DESCUBRIMIENTO
DE LOS POLLINIZADORES

Tome su tiempo para descubrir las abejas, colibríes, murciélagos, mariposas, polillas, y otros en este poster en nuestra página www.pollinator.org. Las herramientas de BeeSmart™ disponibles para ayudarlo a compartir sus propios descubrimientos de polinizadores con el programa S.H.A.R.E.*



SHARE

SEEDS



Signs, Signs, Signs!



POLLINATOR PARTNERSHIP

Signs, Signs, Signs!

- Signify intent
- Incorporate public feedback mechanism
- Think of themes to base information around – i.e, how-to, “mythbusting”, climate-smart, flood mitigation, etc.



Pollinator Habitat

This area provides food, nesting, and resting for pollinators

Learn how to make your own pollinator habitat at pollinator.org



POLLINATOR PARTNERSHIP

POLLINATOR PARTNERSHIP

Pollinator Garden

This area provides food, nesting, and resting for pollinators

Learn how to make your own pollinator garden at

pollinator.org



pollinator.org

Patience and Persistence



**POLLINATOR
PARTNERSHIP**

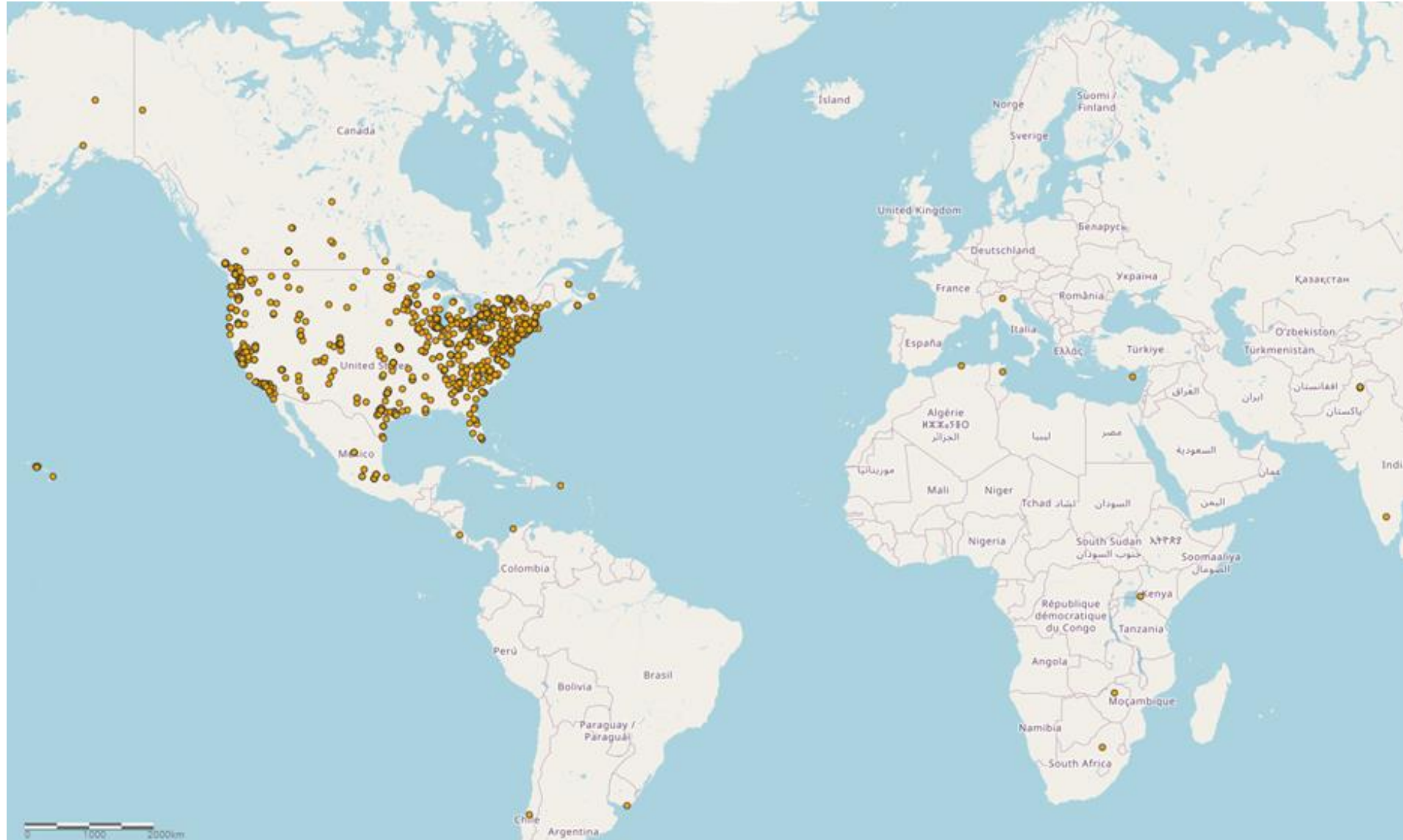
Community Engagement



- Which community do you want to engage and why?
- What are the challenges the community currently reports, if known?
- How can your intended goals help alleviate these challenges? OR
- How can the prevalence of these challenges be reduced in your intended project/goal?



PSC 2024 Map!



Bee Houses: Uses, Dos, and Don'ts





**POLLINATOR
PARTNERSHIP**

Bee Houses Can be Fun!

BUT know what:

1. they are for (and not for)
2. not to use
3. to look for
4. to do to maintain



POLLINATOR
PARTNERSHIP

Why Bee Houses?



- More nesting
- Support pollination
- Educational
- Fun!
- Conservation?

Why NOT Bee Houses?



- Harm if not properly designed
- Not maintained
- Pests
- Not enough food
- Invasive species

Solitary Bee Life Cycle



1. Egg



2. Larva



3. Pupa



4. Adult



6. Nest Building:
Food Storing and Egg Laying



5. Foraging:
Collecting Pollen and Nectar
Pollination!

Illustrations: Steve Buchanan
Modified by: Victoria Wojcik



Photo: Leaf Cutter Bee by Rodger Evans, courtesy of Flickr (CC BY-ND 2.0)



**POLLINATOR
PARTNERSHIP**

Natural Bee Nests = Plants with Pithy Stems



What you don't want



- Too shallow
- Too many
- Too wide
- Not secure
- CAN'T CLEAN

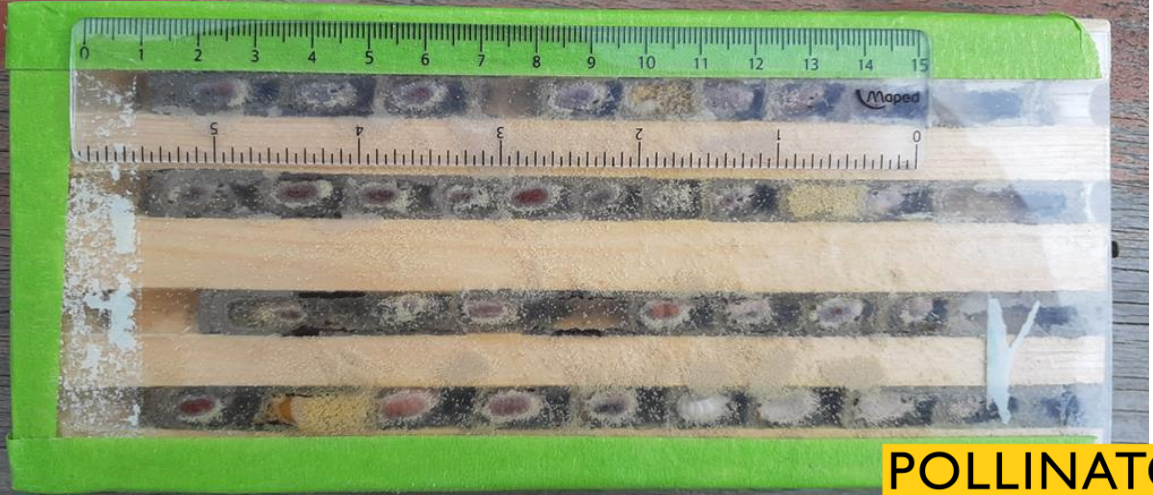
3. What you do want



- Depth at least 15cm
- Width 8mm or less
- Secure
- **CLEANABLE!**



**POLLINATOR
PARTNERSHIP**



**POLLINATOR
PARTNERSHIP**



Garry Fletcher
<https://www.gfletcher.ca/?cat=2>



**POLLINATOR
PARTNERSHIP**



Set up



- Overhang
- South facing
- Food
- Mud
- Secured

Maintain



- Need to be able to remove/clean cocoons and house
- Many methods: dilute bleach, sand
- Find online



Hundreds of Krombein's hairy-footed pollen mites on a mason bee. Image by @GeeBee60.

Annual Schedule for Bee Houses

Early spring (Feb): Put out cleaned/empty bee house

Early spring: Put out cocoons

Spring: Observe and enjoy!

Late Spring/summer: see them hatching/eating/pupating

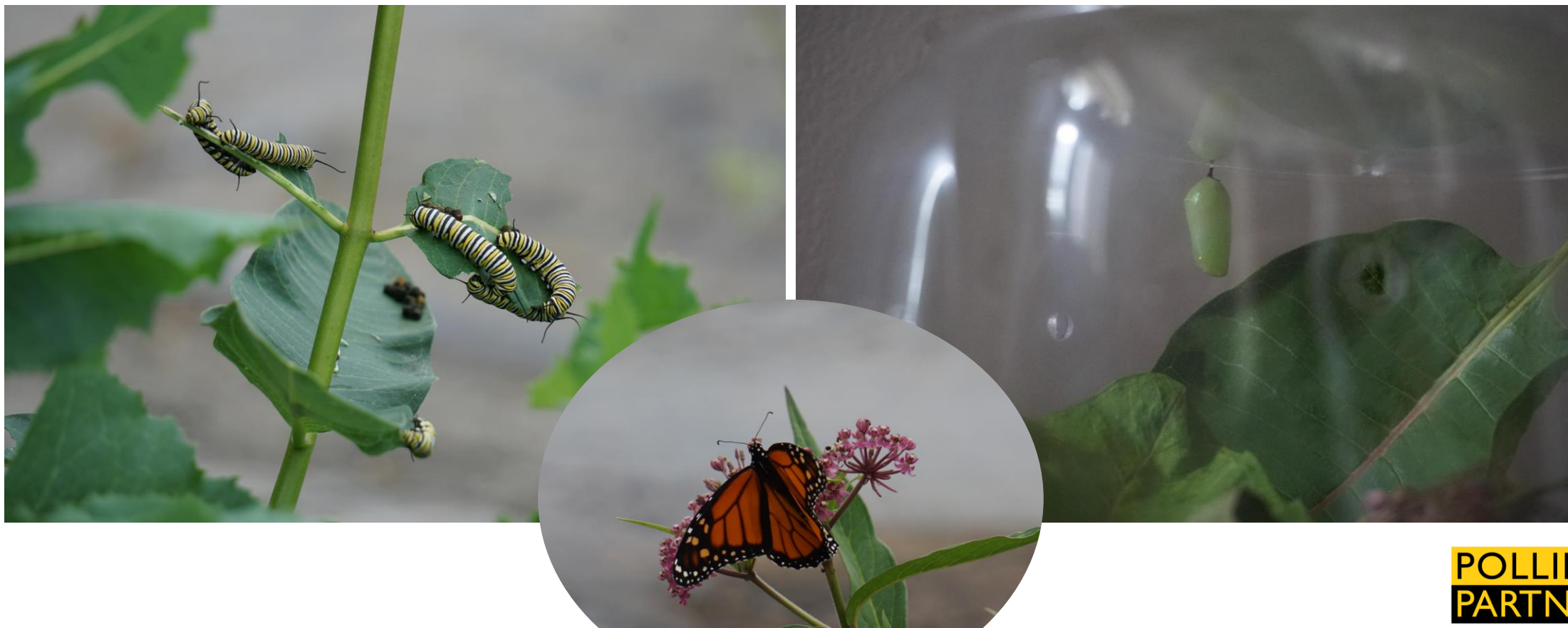
Summer: Nothing

Fall/Winter: Remove cocoons, clean and store

Bee House Short Checklist

- ✓ Tunnels can be cleaned (paper, cardboard, reeds, modular trays)
- ✓ Tunnels are long enough (at least 15cm)
- ✓ Tunnels are not too wide (8mm or less)
- ✓ Structure can be firmly secured (not swinging)
- ✓ Structure has protection from elements (roof)
- ✓ There are enough resources for the bees
- ✓ You are able to take care of the house

Rearing Butterflies



PSC Member Benefits :

Thank you for being a part of our program!

- Access to bonus webinars
- Notified about special events happening at Pollinator Partnership
- Access to our PSC Facebook group that connects all past and current participants
- First to hear about discounts on pollinator posters and resources!



A PROGRAM OF
POLLINATOR PARTNERSHIP

Next Steps and Certification:

- Complete the Step 1 form by December 31st, 2024.
- After submitting the Step 1 form, your responses will be reviewed, and Pollinator Partnership staff will send you the link to the Step 2 form. You must complete your habitat and outreach actions and submit your Step 2 form by September 30th, 2025.
- Once both forms have been submitted and approved, you will receive a certificate of completion, and the authority to use the Pollinator Steward stamp as part of your correspondence and pollinator-related activities.



PSC Step 1: Module Summaries

a) Summarize in one or two sentences what you learned from Module 1: Introduction to Pollinators. *

b) Summarize in one or two sentences what you learned from Module 2: Indigenous Perspectives. *

c) Summarize in one or two sentences what you learned from Module 3: Butterflies and Other Pollinators. *



Next Steps and Certification:


- Complete the Step 1 form by December 31st, 2024.
- After submitting the Step 1 form, your responses will be reviewed, and Pollinator Partnership staff will send you the link to the Step 2 form. You must complete your habitat and outreach actions and submit your Step 2 form by September 30th, 2025.
- Once both forms have been submitted and approved, you will receive a certificate of completion, and the authority to use the Pollinator Steward stamp as part of your correspondence and pollinator-related activities.



PSC Step 2: Habitat and Outreach Action Details

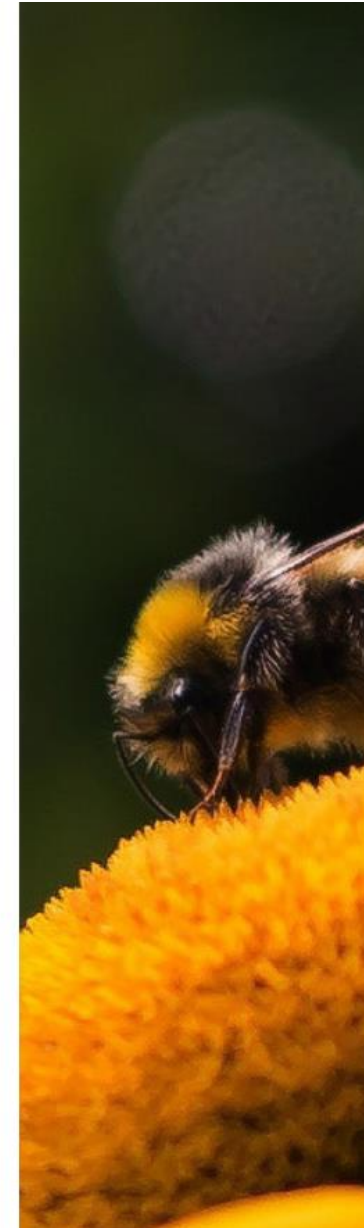
1. Describe in 1-2 paragraphs what HABITAT activities you have conducted within the last year for pollinators. *

2. Provide at least one picture showing your habitat work. *



Browse Files
Drag and drop files here

3. Describe in 1-2 paragraphs what OUTREACH activities you have conducted within the last year for pollinators. *



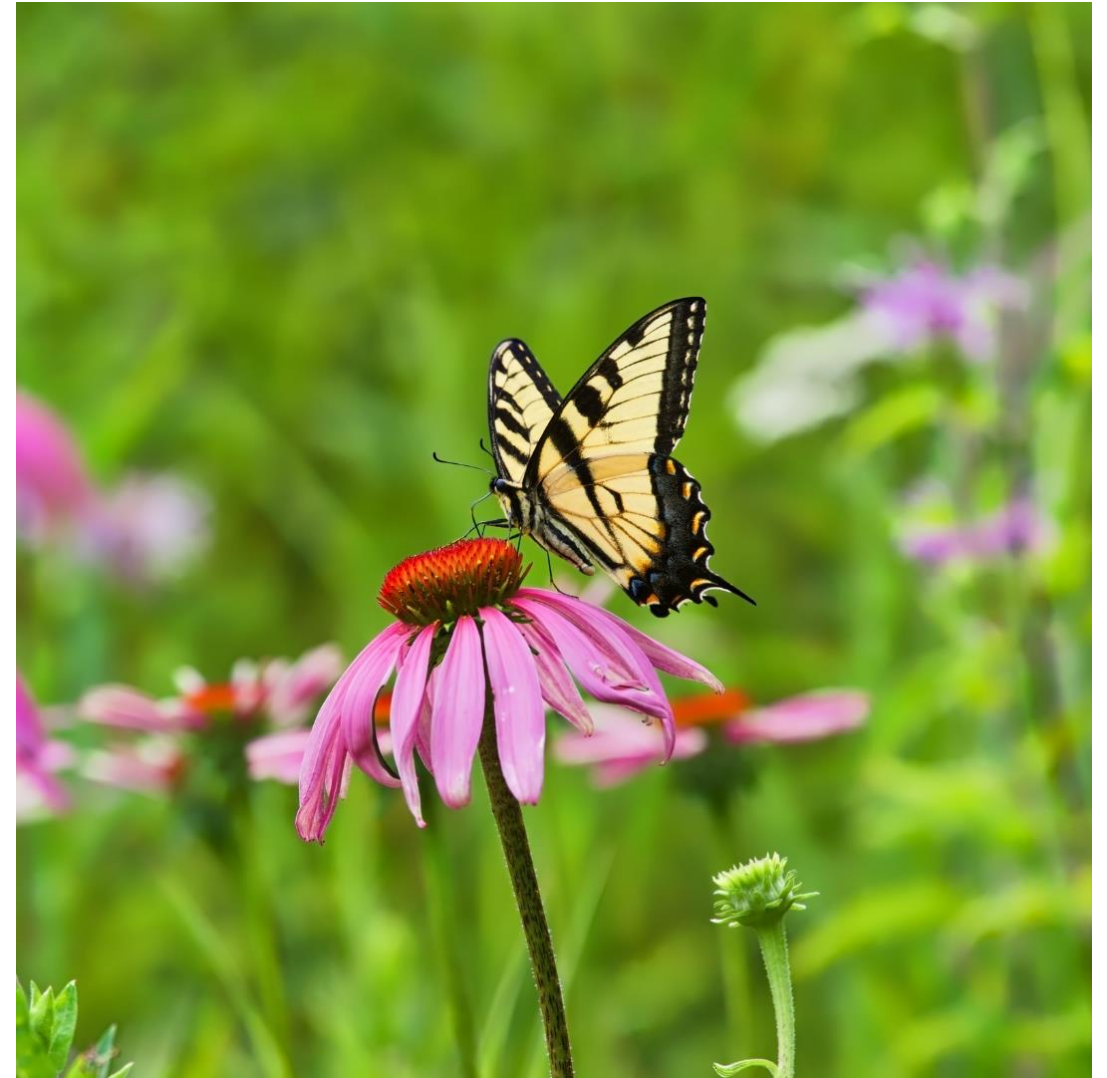
Step 2 Outreach Actions:

- Creating pollinator and garden signage.
- Connecting with other community members and schools to spread pollinator education.
- Art/science outreach through crafts and installations.
- Email stewards@pollinator.org if you have a question about your outreach or education action.



Step 2 Habitat Actions:

- Creation of pollinator habitat; any size, any location.
- Removal of invasive plant species.
- Alteration of management practices to promote pollinator health.
- Email stewards@pollinator.org if you have a question about your habitat action.



Next Steps and Certification:

- Complete the Step 1 form by December 31st, 2024.
- After submitting the Step 1 form, your responses will be reviewed, and Pollinator Partnership staff will send you the link to the Step 2 form. You must complete your habitat and outreach actions and submit your Step 2 form by September 30th, 2025.
- Once both forms have been submitted and approved, you will receive a certificate of completion, and the authority to use the Pollinator Steward stamp as part of your correspondence and pollinator-related activities.



Wrap Up :

- Recordings and resources will be shared on the Course Information page this week
- Recordings will be available on the Course Information page until December 31st, 2024
- **Step 1 Form will be sent to you in an email this week**
- CONGRATS! You have completed the first part of your Pollinator Steward Training!



**POLLINATOR
PARTNERSHIP**