

American Plum

Prunus americana



American Plum, Photo credit: Kate Redmond

Type: Tree-form and/or clonal shrub

Light requirements: sun, part shade

Soil moisture: dry- medium

Bloom Period: April – May

Pollinators: bumble bees, native bees, honey bees, beetles, wasps, moths, butterflies, Monarchs

Larval host: 45+ species of butterflies and moths

**POLLINATOR
PARTNERSHIP**

Nannyberry

Viburnum lentago



Photo credit John Hilty, Illinois Wildflowers

Type: Tree-form and/or clonal shrub

Light requirements: sun, part shade

Soil moisture: moist-dry

Bloom Period: May-June

Pollinators: bumble bees, native bees, honey bees, beetles, wasps, moths, butterflies

Larval host: 17+ species of butterflies and moths

**POLLINATOR
PARTNERSHIP**

Bladdernut

Staphylea trifolia



2014 © Peter M. Dziuk

Photo credit Peter Dziuk, Minnesota Wildflowers

Type: shrub

Light requirements: sun, part shade

Soil moisture: wet - dry

Bloom Period: April - June

Pollinators: bumble bees, native bees, honey bees, beetles, wasps, moths, butterflies

Larval host: 2 species of moths

**POLLINATOR
PARTNERSHIP**

Ninebark

Physocarpus opulifolius



Photo credit Peter Dziuk, Minnesota Wildflowers

Type: shrub

Light requirements: sun, part shade

Soil moisture: moist

Bloom Period: April - June

Pollinators: bumble bees, native bees, honey bees, beetles, wasps, moths, butterflies

Larval host: 20+ species of moths

**POLLINATOR
PARTNERSHIP**

Apple/crabapple

Malus spp.



Prairie crab apple, Photo credit Peter Dziuk, Minnesota Wildflowers

Type: tree

Light requirements: sun, part shade

Soil moisture: moist - dry

Bloom Period: April - May

Pollinators: bumble bees, native bees, honey bees, moths, butterflies

Larval host: 4+ species of moths

Chokecherry

Prunus virginiana



Photo credit Katy Chayka, Minnesota Wildflowers

© 2007 Katy Chayka

Type: Tree-form and/or cloning shrub

Light requirements: sun, part-shade

Soil moisture: moist-dry

Bloom Period: April-May

Pollinators: bumble bees, native bees, honey bees, beetles, wasps, moths, butterflies

Larval host: 100+ species of butterflies and moths

**POLLINATOR
PARTNERSHIP**

Hawthorn spp.

Crataegus spp.



Type: Tree/shrub

Light requirements: sun, part-shade

Soil moisture: moist-dry

Bloom Period: April-May

Pollinators: bumble bees, native bees, honey bees, beetles, wasps, moths, butterflies

Larval host: 4+ species of moths

Photo credit Katy Chayka, Minnesota Wildflowers

© 2018 Katy Chayka

**POLLINATOR
PARTNERSHIP**

Black cherry

Prunus serotina

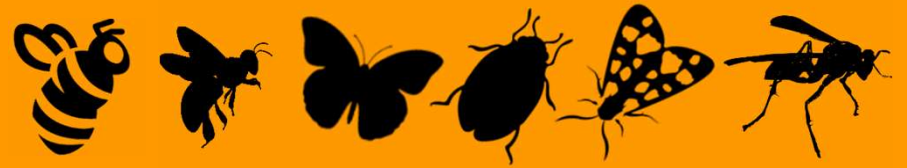


Photo credit Peter Dziuk, Minnesota Wildflowers

Type: Tree-form and/or cloning shrub

Light requirements: sun, part-shade

Soil moisture: moist-dry

Bloom Period: April-May

Pollinators: bumble bees, native bees, honey bees, beetles, wasps, moths, butterflies, Monarchs

Larval host: 100+ species of butterflies and moths

**POLLINATOR
PARTNERSHIP**

Serviceberry

Amelanchier spp.



Photo credit John Hilty, Illinois Wildflowers

Type: tree, multi-stem shrub

Light requirements: sun, part-shade

Soil moisture: moist-dry

Bloom Period: April-May

Pollinators: native bees, beetles, wasps, moths,

Larval host: 5+ species of moths

**POLLINATOR
PARTNERSHIP**

Staghorn sumac

Rhus typhina

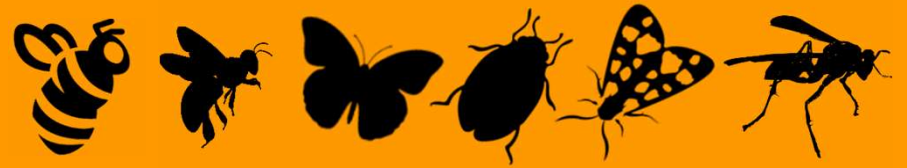


Photo credit: Kate Redmond

Type: single crown, resprouts

Light requirements: sun, part-shade

Soil moisture: dry

Bloom Period: May-June

Pollinators: bumble bees, native bees, honey bees, beetles, wasps, moths, butterflies

Larval host: 30+ types of butterflies and moths

Nesting and Structure habitat: bees

**POLLINATOR
PARTNERSHIP**

Smooth sumac

Rhus glabra

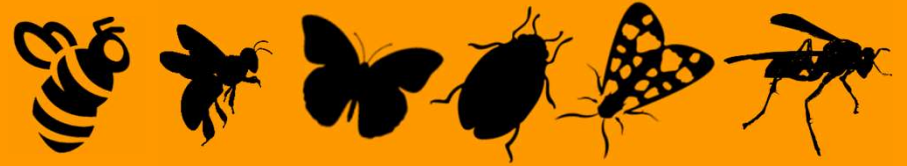


Photo credit Peter Dziuk, Minnesota Wildflowers

Type: single crown, resprouts

Light requirements: sun, part-shade

Soil moisture: dry

Bloom Period: April - May

Pollinators: bumble bees, native bees, honey bees, beetles, wasps, moths, butterflies, Monarchs

Larval host: 5 species of butterflies and moths

Nesting and Structure habitat: bees

**POLLINATOR
PARTNERSHIP**

Oak spp.

Quercus spp.



Red oak, photo credit John Hilty, Illinois Wildflowers

Type: tree, single stem

Light requirements: sun, part-shade

Soil moisture: moist - dry

Bloom Period: April - May

Pollinators: NA, wind-pollinated

Larval host: 100+ species of butterflies and moths

Nesting and Structure habitat: bees

Maple *spp.*

Acer spp.



Red maple, photo credit John Hilty, Illinois Wildflowers

Type: tree, single stem

Light requirements: sun, part-shade

Soil moisture: moist - dry

Bloom Period: March - April

Pollinators: NA, wind-pollinated

Larval host: 100+ moth species

American Hazelnut

Corylus americana



female flower

Type: shrub, resprouts

Light requirements: sun, part-shade

Soil moisture: dry

Bloom Period: April - May

Pollinators: NA, wind pollinated

Larval host to: 20+ types of moth species

Photo credit Peter Dziuk, Minnesota Wildflowers

2013 © Peter M. Dziuk

**POLLINATOR
PARTNERSHIP**

Dogwood spp.

Cornus spp.



Redosier dogwood flower, photo credit John Hilty, Illinois Wildflowers

Type: shrub

Light requirements: sun, part shade

Soil moisture: wet – moist

Bloom Period: March - May

Pollinators: bumble bees, native bees, honey bees, beetles, wasps, flies, moths, butterflies

Larval host: 50+ butterflies and moths

**POLLINATOR
PARTNERSHIP**

American Witchhazel

Hamamelis virginiana



Photo credit: Amber Barnes

Type: multi-stem tree/shrub

Light requirements: sun, part shade, shade

Soil moisture: moist - dry

Bloom Period: September - November

Pollinators: bumble bees, native bees, honey bees, beetles, wasps, flies, moths, butterflies

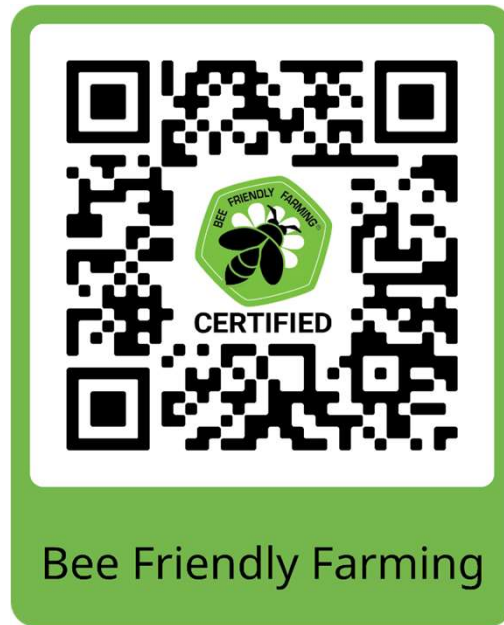
Larval host: 25+ moth species

**POLLINATOR
PARTNERSHIP**

Interested in learning more?



 SCAN ME for Plant Guides



**POLLINATOR
PARTNERSHIP**

**POLLINATOR
PARTNERSHIP
CAN HELP!**

Looking for technical or financial assistance to help you reach your land stewardship goals?

Our liaisons can share resources and assist you in connecting with your local field office.

There are many programs available to help you apply conservation practices that can improve soil health, biodiversity, and production on your lands. Let us help you get started!

SCAN HERE  TO VISIT
WWW.POLLINATOR.ORG/NRCS-LIAISONS



*Pollinator Partnership
Wisconsin*



Laura Jach Smith
NRCS Pollinator Liaison

Have Questions?
Contact Laura at
ljs@pollinator.org

