



Creating a Successful Bee Friendly Farming Application Farm Map

Cody Wilson

Over the last three years, the Bee Friendly Farming Team has reviewed hundreds of BFF applications. A consistent need amongst these applications is further instruction on how to create a BFF Farm Map. So how does one create a proper BFF Farm Map?

Regardless of your methods to produce a BFF Farm Map, all maps require 4 basic features: labeled property boundaries, habitat locations, forage locations, and water locations. Below are a few approved examples of farm maps submitted by other growers. For more information, or additional assistance creating your BFF Farm Map, reach out to bff@pollinator.org.

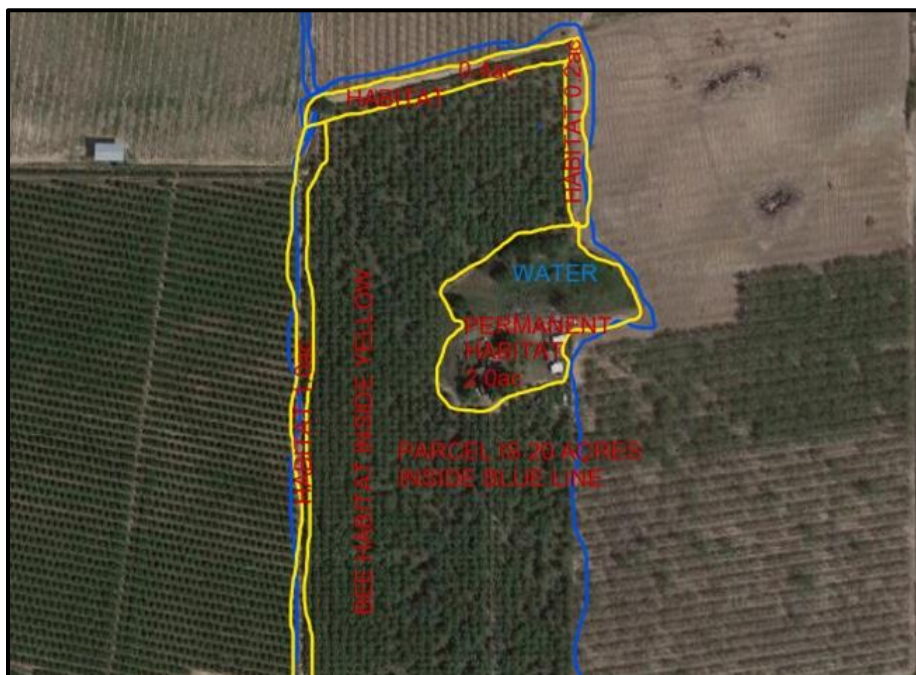


Figure 1. BFF Farm maps can be drawn using applications such as Microsoft Paint

**POLLINATOR
PARTNERSHIP**

600 Montgomery Street, Suite 440 San Francisco, CA 94111



Figure 2. Don't have access or the ability to electronically draw on your maps? Not a problem. Print out an overhead of your farm and hand-write in the labels for BFF features.

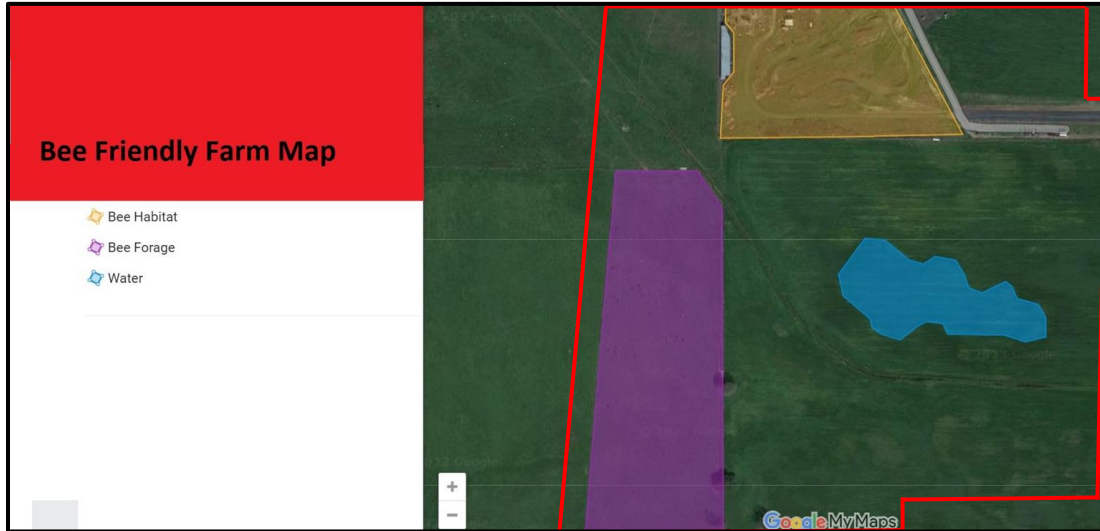


Figure 3. Use [Google's My Maps](#) to create custom map features on your farm. This will allow you to locate and label each of your forage, habitat, and water sources within your property boundaries.