

### What is a host plant and why are they important?

Most butterfly and moth young eat only one or just a few species of plants. The plant species where the females lay their eggs and that the larvae eat are called host plants. By planting host plants in our gardens, we can turn our yards in to havens for pollinating butterflies and moths.

Parish's Goldeneye  
(*Bahiopsis parishii*)



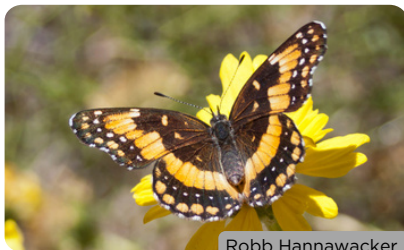
Jesse Rorabaugh

California Patch larva



Mike Plagens

Adult California Patch



Robb Hannawacker

California Evening Primrose  
(*Oenothera avita*)



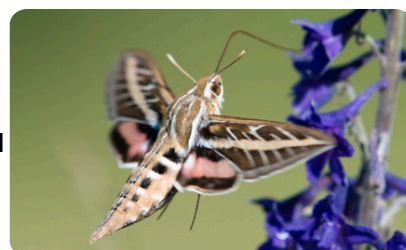
Leah Gardner

White-lined Sphinx larva



Zoltán Stekkelpak

Adult White-lined Sphinx Moth



Adam Jackson

**POLLINATOR PARTNERSHIP**

Protect their lives. Preserve ours.



Learn more at [pollinator.org/nappc/lepidoptera](https://pollinator.org/nappc/lepidoptera)!

\*Please consult with your local native plant society or nursery before purchasing!

**Santa Barbara Milk Vetch**  
(*Astragalus trichopodus*)



**Marine Blue Larva**



Steve Jones, CC BY-NC 4.0

**Adult Marine Blue**



Andy Kleinhesselink

**Cottonwoods**  
(*Populus spp.*)\*



Joey Bom

**Western Tiger Swallowtail Larva**



Sarah Zukoff

**Adult Western Tiger Swallowtail**



Adam Jackson

**Mallow family**  
(*Malvaceae spp.*)\*



Rachel Whitt

**West Coast Lady Larva**



Robin Gwen Agarwal, CC BY-NC

**Adult West Coast Lady**



Craig Martin