

# Pollinator Steward Certification



A PROGRAM OF  
POLLINATOR PARTNERSHIP

## Module 7: Expand Your Impact!

Tuesday, April 7th, 2026

Anthony Colangelo  
Pollinator Partnership

Maddie Dong  
Pollinator Partnership

Anya Peters  
PSC Star Steward

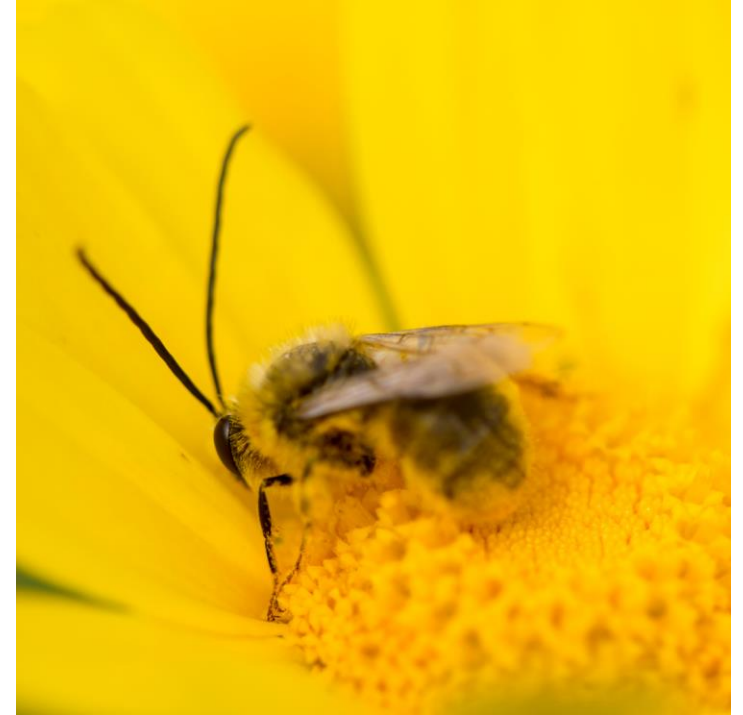
[www.pollinator.org](http://www.pollinator.org)  
[stewards@pollinator.org](mailto:stewards@pollinator.org)

**POLLINATOR  
PARTNERSHIP**

Protect their lives. Preserve ours.

# Housekeeping:

- This week's recording will be shared on the Course Information page by Friday. All recordings will be available until December 31<sup>st</sup>, 2026
- Closed captioning is available – enable in your controls.
- Please put questions in the Q&A box.
- Questions for panelists will be answered at the end of the session.
- Scan the Wordly QR code or use the links we sent for translation services.
- Contact [stewards@pollinator.org](mailto:stewards@pollinator.org) for registration issues, questions, etc.
- Engage in respect and kindness with each other in the chat.
- We suggest that you write down in point form or 1-2 sentences the key takeaways from each training while you are attending live.



**POLLINATOR  
PARTNERSHIP**

# Course Information Page:

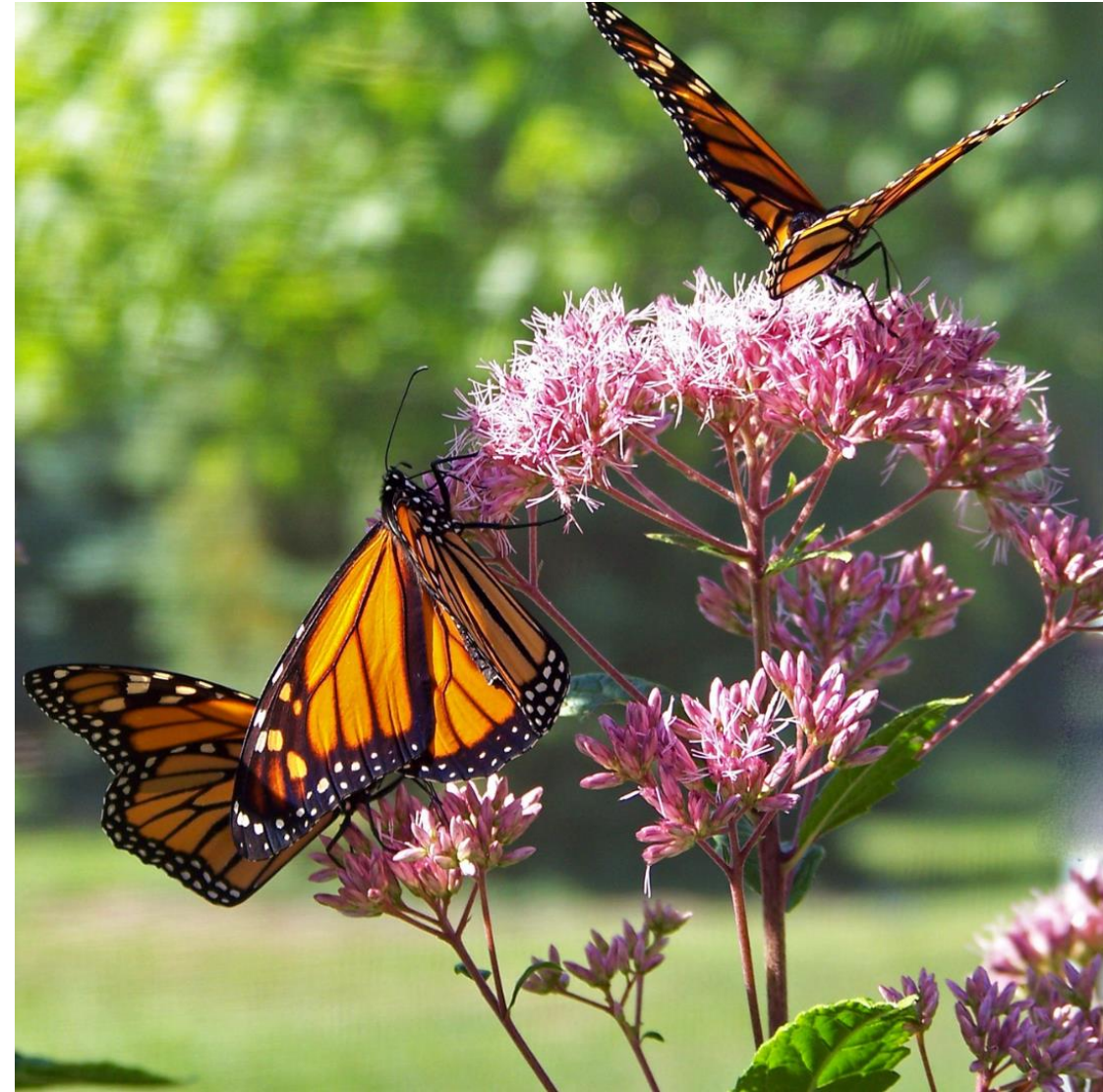
The Course Information page will be your homebase for module recordings, updates, and program resources. Login to the Course Information page using the following username and password:

**website:** <https://www.pollinator.org/psc/course-info>

**username:** PollinatorSteward

**password:** psc2026

Please do not share the username and password as this page is only for registered participants of the 2026 Pollinator Steward Certification program.



**POLLINATOR  
PARTNERSHIP**

# Tonight's Speakers!



**Anthony Colangelo**  
Education Manager  
Pollinator Partnership



**Maddie Dong**  
Communications Coordinator  
Pollinator Partnership



**Anya Peters**  
PSC Star Steward!

# Bee Houses: Uses, Dos, and Don'ts

---





**POLLINATOR  
PARTNERSHIP**

# Why Bee Houses?



- More nesting
- Support pollination
- Educational
- Fun!
- Conservation?

# Why NOT Bee Houses?



- Harm if not properly designed
- Not maintained
- Pests
- Not enough food
- Invasive species



Photo: Leaf Cutter Bee by Rodger Evans, courtesy of Flickr (CC BY-ND 2.0)

### Solitary Bee Life Cycle



1. Egg



2. Larva



3. Pupa



4. Adult



6. Nest Building:  
Food Storing and Egg Laying



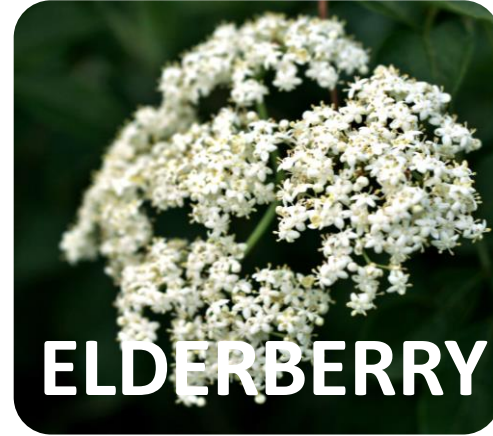
5. Foraging:  
Collecting Pollen and Nectar  
Pollination!

Illustrations: Steve Buchanan  
Modified by: Victoria Wojcik



**POLLINATOR  
PARTNERSHIP**

# Natural Bee Nests = Plants with Pithy Stems



# 3. What you do want

---



- Depth at least 15cm
- Width 8mm or less
- Secure
- **CLEANABLE!**

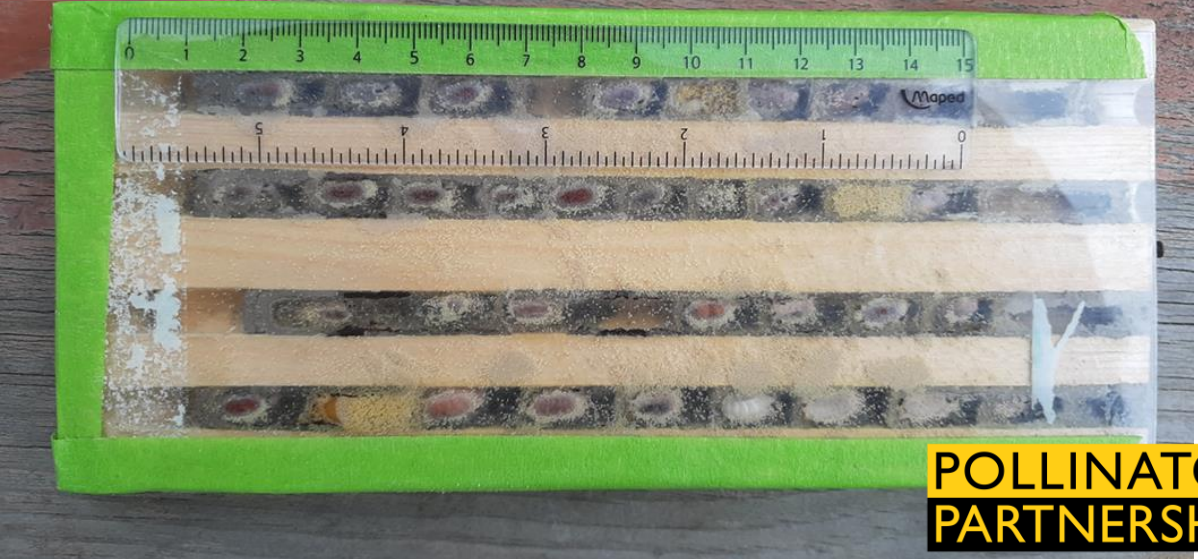
# What you don't want



- Too shallow
- Too many
- Too wide
- Not secure
- CAN'T CLEAN



**POLLINATOR  
PARTNERSHIP**



**POLLINATOR  
PARTNERSHIP**



Garry Fletcher  
<https://www.gfletcher.ca/?cat=2>



**POLLINATOR  
PARTNERSHIP**



# Set up



- Overhang
- South facing
- Food
- Mud
- Secured

# Maintain



- Need to be able to remove/clean cocoons and house
- Many methods: dilute bleach, sand
- Find online



Hundreds of Krombein's hairy-footed pollen mites on a mason bee. Image by @GeeBee60.

# Annual Schedule for Bee Houses

**Early spring (Feb):** Put out cleaned/empty bee house

**Early spring:** Put out cocoons

**Spring:** Observe and enjoy!

**Late Spring/summer:** see them hatching/eating/pupating

**Summer:** Nothing

**Fall/Winter:** Remove cocoons, clean and store

# Bee House Short Checklist

- ✓ Tunnels can be cleaned (paper, cardboard, reeds, modular trays)
- ✓ Tunnels are long enough (at least 15cm)
- ✓ Tunnels are not too wide (8mm or less)
- ✓ Structure can be firmly secured (not swinging)
- ✓ Structure has protection from elements (roof)
- ✓ There are enough resources for the bees
- ✓ You are able to take care of the house



# BEE HOUSES

A male mason bee with pollen on its back



## WHAT IS A BEE HOUSE?

Artificial bee houses can be made or purchased and are used by wild bees such as mason and leafcutting bees. These bees are 'solitary', meaning that they don't live in colonies. Each female makes her own nest in natural or artificial tunnels.

**Natural nesting is the best way to support native bees, but if done right, artificial nesting can provide a boost to wild bees and be a fun, educational, and engaging activity.**

### No Fear of Stings!

Wild solitary bees are very unlikely to sting you; give them some space and they will be your pollinator powerhouses.

## BUYING A BEE HOUSE

Many bee houses offered at stores are not properly designed to allow for cocoon removal and cleaning. Some houses have tunnels that are far too wide to be used by any native bees and invite pest species such as social wasps. Bee houses with too many nesting sites in one structure can provide a buffet for predators and a breeding ground for parasites and diseases.

When buying a bee house, make sure the structure has tunnels that can be cleaned!

More specifications on pg 2.



[www.pollinator.org](http://www.pollinator.org)



Bee houses are fun and educational

## DIY BEE HOUSES

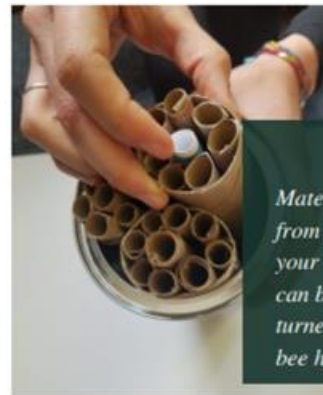
Create your own bee house from materials around your home or woodshop!

**Housing:** the outer housing can be made from wood, pvc piping, or recyclables like cans and milk containers.

**Nesting:** the nest tunnels are within the housing. They can be made by drilling holes in wood blocks, logs (no need for housing in this case), or cut lumber. If you're not into wood working, harvest plant stems such as hollow reeds, roll newspaper, or purchase cardboard straws. Make sure the back of the tunnel is sealed so light does not come in.

Making various sized tunnels, .35" and less, can attract a variety of bee types!

Modular trays or reed, paper, or cardboard straws are great options



Materials from around your house can be turned into bee houses

## LOCATING AND CARING FOR YOUR BEE HOUSE

- Mount to a solid object like a post, house, or fence.
- Orient so it is facing direct sunlight in the morning.
- Make sure there are flowers near the house.
- At eye level ~3-6' (~1-2 m) above the ground.
- Can be placed on balconies, up to 10 stories.
- Area is free of pesticides that are harmful to bees.



## WHETHER BUYING OR MAKING, FOLLOW THESE GUIDELINES:

- Tunnels can be opened to remove cocoons and clean (paper, cardboard, reeds, modular trays).
- Beware of bamboo; cocoons cannot be removed.
- Tunnels are at least 6" (15 cm) long.
- Tunnels are .35" (9 mm) or less in diameter.
- Structure can be firmly secured (not swinging).
- Nest tunnels have protection from elements (roof).

[www.pollinator.org](http://www.pollinator.org)

Find more information on creating and caring for bee houses [link to 2-pager page], [this video](#), and at [Crown Bees](#)



# Habitat and Outreach Examples

POLLINATOR  
PARTNERSHIP

# Large and Small Habitat



**POLLINATOR  
PARTNERSHIP**

# Neighborhoods, Cities, and Public Spaces

PSC provides participants with a toolkit of effective outreach strategies to become leaders of pollinator conservation efforts in their communities

- Community events
- Seeds and resource distribution
- Volunteer planting workshops
- Lectures and educational talks



**POLLINATOR  
PARTNERSHIP**



# LA POLINIZACIÓN

STEPHANIE P. ESPINOSA GARCÍA

### ¿QUÉ ES?

Movimiento del polen de las partes masculinas a las femeninas entre flores de la misma especie, permitiendo la fecundación y formación de semillas y frutos, por gravedad o polinizadores, durante la época de floración

### ¿QUIÉNES POLINIZAN?

Abejas melíferas y no melíferas  
Abejorros  
Mariposas  
Escarabajos

Moscas  
Pájaros  
Lagartos  
Muercélagos

ESTOY AQUÍ, EN UNA FLOR, HACIENDO POLINIZACIÓN

### IMPORTANCIA

- Mantienen la producción de alimentos
- Estabilizan los ecosistemas
- Regulan ciclos vitales como el nitrógeno y el carbono
- Las abejas son los polinizadores más eficaces

### AMENAZAS

- Pérdida de hábitat
- Parásitos y enfermedades
- Especies vegetales invasoras
- Uso de agroquímicos
- Cambio climático



POLLINATOR PARTNERSHIP

# Classrooms, Schools, and Students

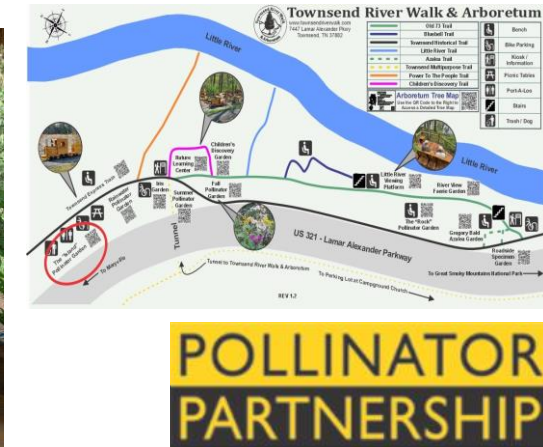
Many of our stewards are teachers or educators involved in school communities and take their habitat and outreach work to campus

- Educational pollinator teaching gardens
- Pollinator-focused guest lectures on
  - Habitat restoration
  - Land stewardship
  - Pollinator identification
  - Monitoring using iNaturalist



# Community Connections

Ultimately, PSC encourages participants to leverage connections in their communities and form relationships around pollinator conservation, stewardship of the natural world, and collective action.



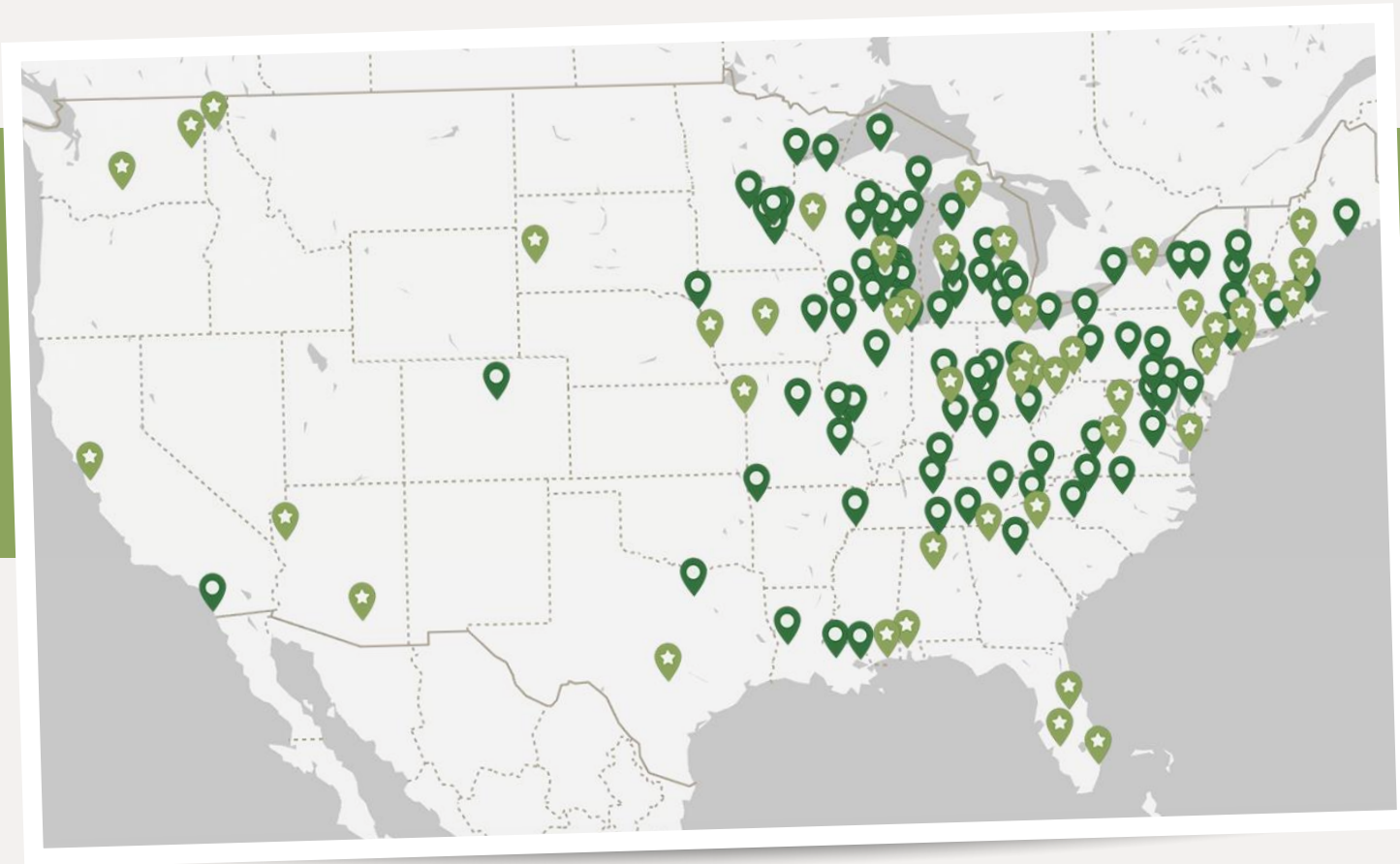


# Connecting People & Native Plants

**100+** chapters  
across 36 states

**13,000+** members  
nationwide

A growing network of local chapters leading native plant education and habitat work



Promoting native  
landscapes  
through education,  
advocacy and  
collaborative action

Join a movement of native planters  
growing healthier landscapes

[wildones.org](http://wildones.org)

# Two Ways to Get Involved

*No chapter in your area?*

## Volunteer with a local Chapter Start a Chapter

- ✓ Lead education programs and outreach
- ✓ Support access to native plants
- ✓ Join habitat projects and restoration efforts
- ✓ Bring native plant education to your community
- ✓ Lead local habitat and outreach efforts
- ✓ Build a network of stewards and advocates



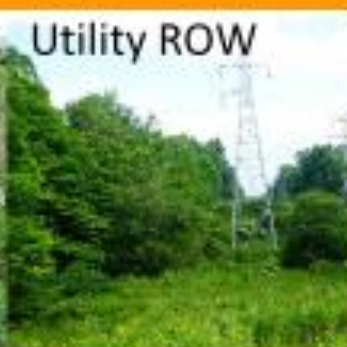
### Who to connect with

- ✓ Find a local chapter: [wildones.org/near-me](https://wildones.org/near-me)
  - ✓ me
  - ✓ Contact chapter leaders directly
- Email national: [support@wildones.org](mailto:support@wildones.org)

**Already planning your habitat + outreach project?**  
A Wild Ones Chapter can help you amplify both.



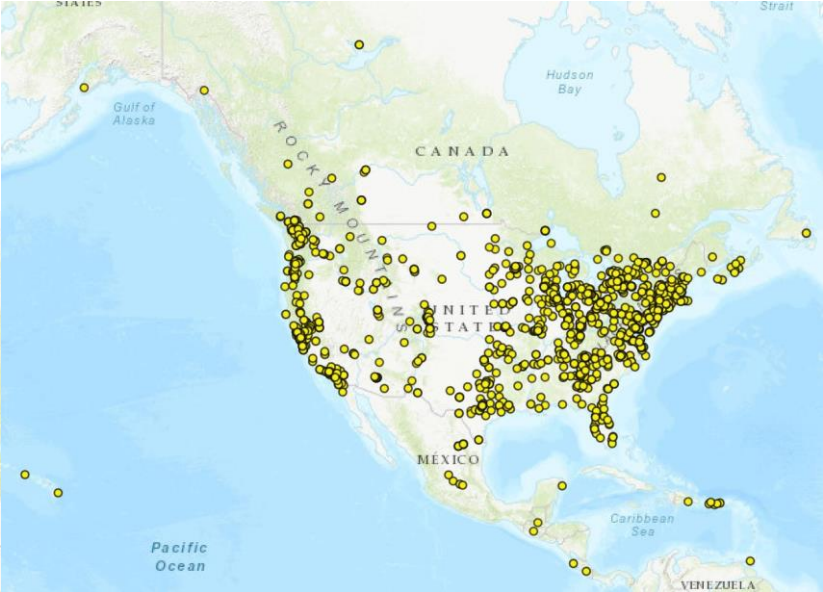
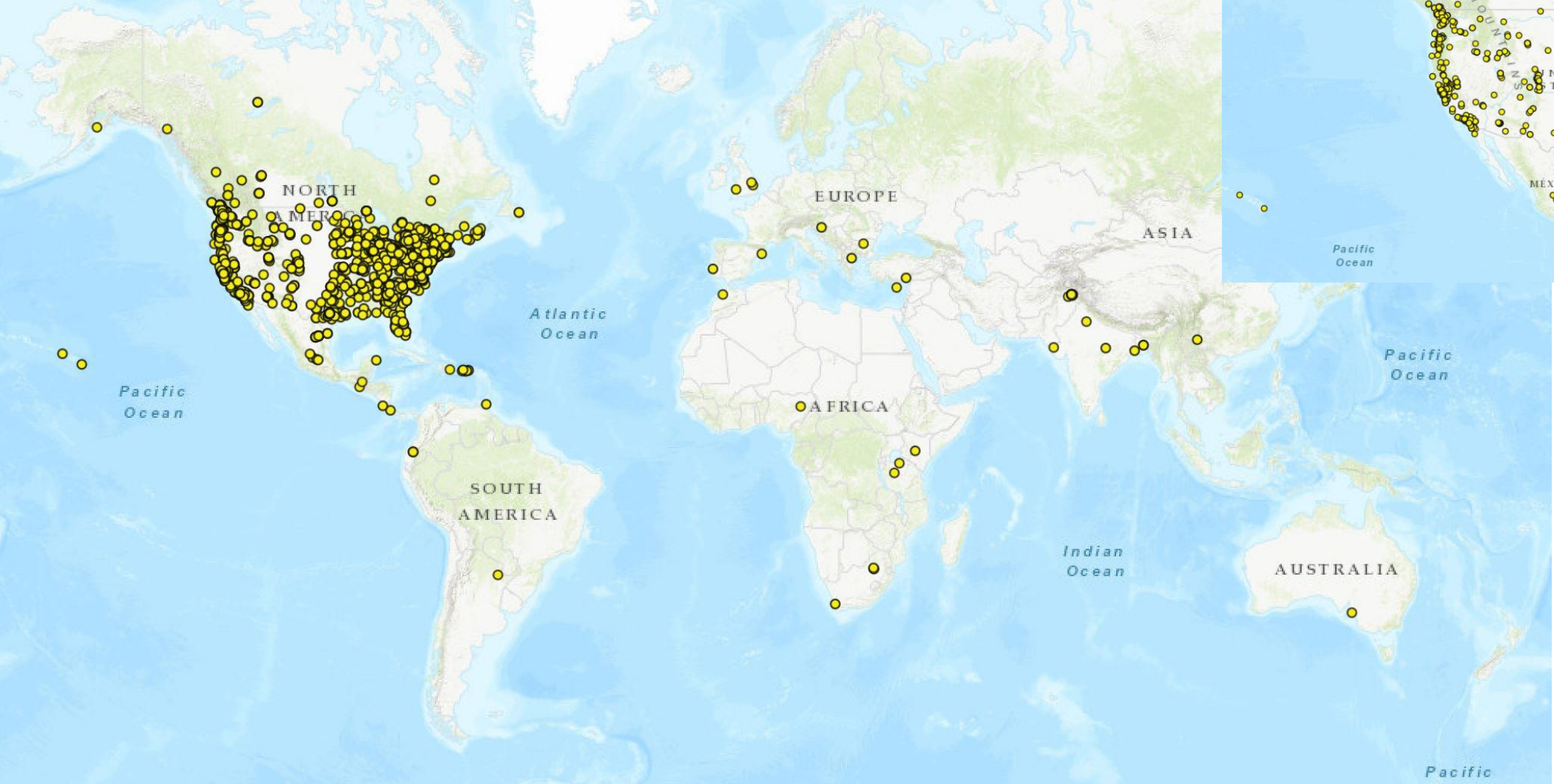
# Together, we can enhance and reconnect the landscape





**POLLINATOR  
PARTNERSHIP**

# Pollinator Stewards Around the World!



# Next Steps and Certification:

- Complete the Step 1 form by **December 31st, 2026**.
- After submitting the Step 1 form, your responses will be reviewed, and Pollinator Partnership staff will send you the link to the Step 2 form.



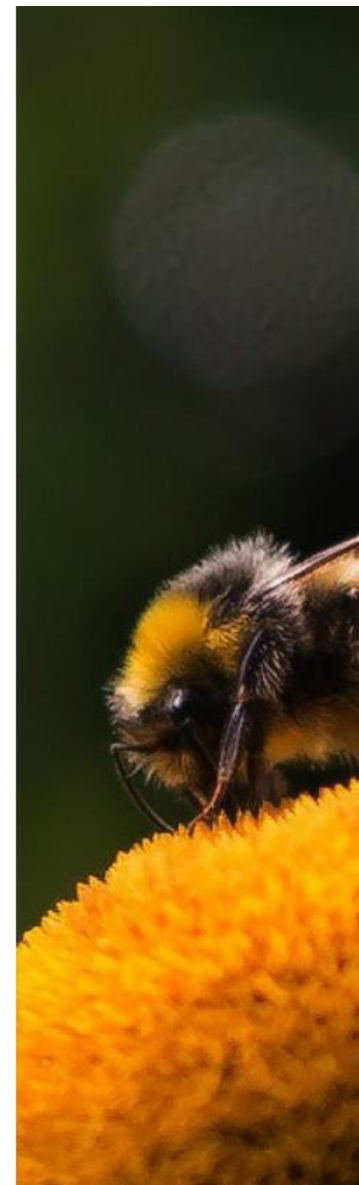
## PSC Step 1: Module Summaries

---

a) Summarize in one or two sentences what you learned from Module 1: Introduction to Pollinators. \*

b) Summarize in one or two sentences what you learned from Module 2: Indigenous Perspectives. \*

c) Summarize in one or two sentences what you learned from Module 3: Butterflies and Other Pollinators. \*



# Next Steps and Certification:


- You must complete your habitat and outreach actions and submit your Step 2 form by **September 30th, 2027**.
- Once both forms have been submitted and approved, you will receive a certificate of completion, and the authority to use the Pollinator Steward stamp as part of your correspondence and pollinator-related activities.



## PSC Step 2: Habitat and Outreach Action Details

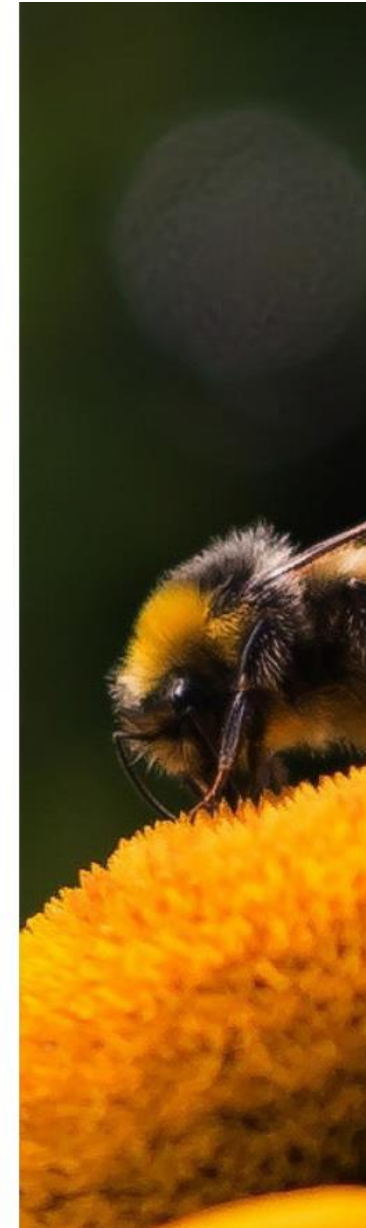
1. Describe in 1-2 paragraphs what HABITAT activities you have conducted within the last year for pollinators. \*

2. Provide at least one picture showing your habitat work. \*



**Browse Files**  
Drag and drop files here

3. Describe in 1-2 paragraphs what OUTREACH activities you have conducted within the last year for pollinators. \*



# Next Steps and Certification:

- Once both forms have been submitted and approved, you will receive a certificate of completion, and the authority to use the Pollinator Steward stamp as part of your correspondence and pollinator-related activities.



# PSC Member Benefits :

Thank you for being a part of our program!

- Access to bonus webinars
- Notified about special events happening at Pollinator Partnership
- Access to our PSC Facebook group that connects all past and current participants
- First to hear about new resources



A PROGRAM OF  
POLLINATOR PARTNERSHIP

# Wrap Up :

- Recordings and resources will be shared on the Course Information page this week
- Recordings will be available on the Course Information page until December 31st, 2026
- **Step 1 Form will be sent to you in an email this week and posted to the Course Info page**
- CONGRATS! You have completed the first part of your Pollinator Steward Training!



**POLLINATOR  
PARTNERSHIP**